

## AARDINGS-EN EQUIPOTENTIAL LITZE, ROESTVRIJ STAAL, 25 MM<sup>2</sup>, 200 MM

### CATALOG NUMBER

**CPI25-200-10**



High-quality CPI stainless steel grounding and bonding braids can be installed in extremely corrosive environments, like offshore applications or coastal applications. The full range of CPI braids are ideal for applications using stainless steel pipe or tanks, like the food and beverage industry, building industry, transportation, oil and chemical industry.

nVent ERIFLEX offers 316L stainless steel braids and lugs, one of the highest resistant stainless steel options on the market. Our proprietary manufacturing process has been optimized to provide the best braiding, crimping, cutting and punching.

### CERTIFICATIONS



### FEATURES

Superior abrasion, corrosion, chemical and UV resistance make CPI braids ideal for outdoor applications

Great for expansion joints where constant movement requires a flexible and durable solution

Ready to use out of the box, eliminates the need for cutting, stripping, crimping and punching

Quick and easy to install

Resistant to vibration and fatigue, reducing maintenance

Will not rust or discolor, so the appearance will never fade or change

Excellent electrical contact

No additional lugs or terminals needed

Non-magnetic material

Recommended by the EMC/EMI directives

Performs to the class C5 (very high) category as per ISO® 12944-2

EAC compliant

RoHS compliant

Compliant to ISO 6469-1 (Electrically propelled road vehicles - Part 1: Rechargeable energy storage system) - Section 6.2.2 Vibrations

### PRODUCTKENMERKEN

Article Number: 554300

Material: Roestvrij staal 316L (EN 1,4404 )

Certification Details: UL® 467

Complies With: IEC® 60439.1;IEC® 61439,1

Cross Section: 25 mm<sup>2</sup>

Length (L): 200 mm

Hole Size (HS): 10,5 mm

A: 26,5 mm

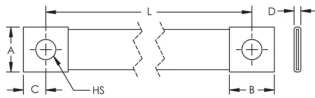
B: 30 mm

C: 15 mm

D: 3,5 mm

Unit Weight: 0,07 kg

## DIAGRAMS



## WAARSCHUWING

Producten van nVent moeten worden geïnstalleerd en gebruikt op de manier zoals is aangegeven in de nVent productinformatiebladen en trainingsmaterialen. U kunt de productinformatiebladen downloaden van [www.nvent.com](http://www.nvent.com) of opvragen bij uw nVent-klantenservice. Door onjuist installeren, verkeerd gebruik, verkeerde toepassing of enige andere handeling in strijd met de instructies en waarschuwingen van nVent kan het product mogelijk niet correct werken, ernstig of fataal letsel en materiële schade veroorzaken en/of uw garantie ongeldig maken.

### Noord-Amerika

+1.800.753.9221

Option 1 – Customer Care

Option 2 – Technical Support

### Europa

Netherlands:

+31 800-0200135

France:

+33 800 901 793

### Europa

Germany:

800 1890272

Other Countries:

+31 13 5835404

### APAC

Shanghai:

+ 86 21 2412 1618/19

Sydney:

+61 2 9751 8500



Our powerful portfolio of brands:  
nVent.com **CADDY ERICO HOFFMAN RAYCHEM SCHROFF**  
**TRACER**