

Color: ■ blue



Electrical data

Ratings per IEC/EN

Nominal voltage (III/3)	400 V
Rated current	41 A

Physical data

Width	12.3 mm / 0.484 inches
Height	3.8 mm / 0.15 inches
Depth	23.9 mm / 0.941 inches
Jumper assignment	1-2

Material data

Note (material data)	Information on material specifications can be found here
Color	blue
Insulation material (main housing)	Polyamide (PA66)
Fire load	0 MJ
Weight of insulation material	0.28 g
Weight	2.7 g

Environmental requirements

Continuous operating temperature	-60 ... +105 °C
----------------------------------	-----------------

Commercial data

ETIM 9.0	EC000489
ETIM 8.0	EC000489
PU (SPU)	5 pcs
Packaging type	Bag
Country of origin	CN
GTIN	4055144068115
Customs tariff number	85366990990

Environmental Product Compliance

RoHS Compliance Status	Compliant, No Exemption
------------------------	-------------------------

Downloads

Environmental Product Compliance

Compliance Search		
Environmental Product Compliance		↓
221-942/000-006		

Documentation

Bid Text		
221-942/000-006	xml 2.97 KB	↓
221-942/000-006	docx 23.92 KB	↓

CAD/CAE-Data

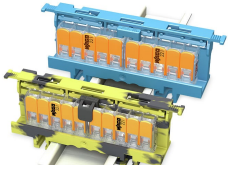
CAD data

2D/3D Models
221-942/000-006



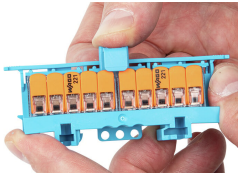
Installation Notes

Commoning



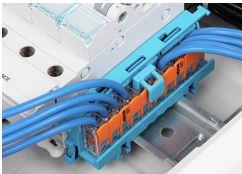
Extending the N and PE (ground) distribution via jumper

Commoning



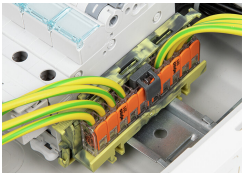
Insert the jumper with a locking function into closed clamping units.

Commoning



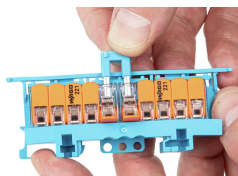
With a locking function:
The lockable jumper is plugged into the splicing connectors.

Commoning



The lockable jumper is plugged into the splicing connectors.

Commoning



Remove the jumper from open clamping units.