

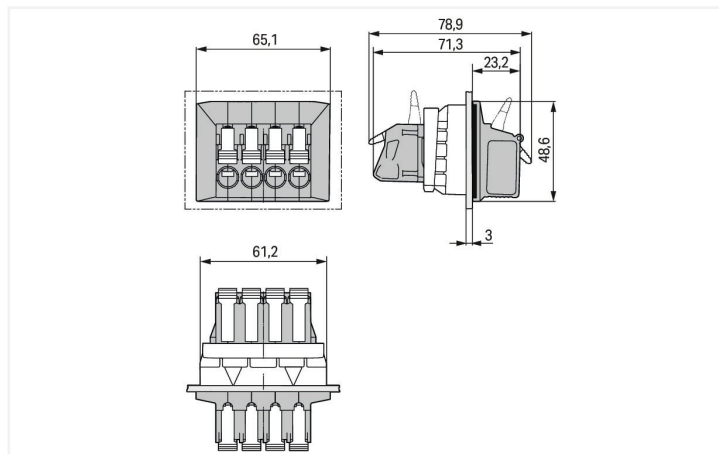
## Data Sheet | Item Number: 828-334

Feedthrough terminal block; lever; Plate thickness: 3 mm; 16 mm<sup>2</sup>; Pin spacing 11.5 mm; 4-pole; CAGE CLAMP®; 16,00 mm<sup>2</sup>; gray

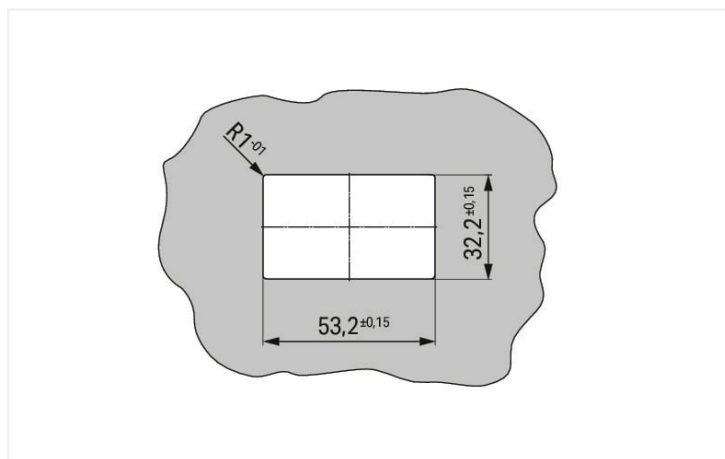
<https://www.wago.com/828-334>



Color: ■ gray



Dimensions in mm



Dimensions in mm

- Feedthrough terminal strips with CAGE CLAMP® on both sides
- Easy, tool-free installation
- Tool-free termination – fingers open/close levers
- Several clamping units can be held open simultaneously – convenient for terminating multi-core cables
- 600 V UL

### Notes

Variants:

Adapters for varying sheet panel thicknesses

Direct marking

Other versions (or variants) can be requested from WAGO Sales or configured at <https://configurator.wago.com/>.

Other pole numbers

### Electrical data

| Ratings per          | IEC/EN 60664-1 |        |        |
|----------------------|----------------|--------|--------|
| Overvoltage category | III            | III    | II     |
| Pollution degree     | 3              | 2      | 2      |
| Nominal voltage      | 1000 V         | 1000 V | 1000 V |
| Rated surge voltage  | 8 kV           | 8 kV   | 8 kV   |
| Rated current        | 57 A           | 57 A   | 57 A   |

| Approvals per | UL 1059 |       |   |
|---------------|---------|-------|---|
| Use group     | B       | C     | D |
| Rated voltage | 600 V   | 600 V | - |
| Rated current | 30 A    | 30 A  | - |

| Approvals per | CSA   |       |   |
|---------------|-------|-------|---|
|               | B     | C     | D |
| Use group     | B     | C     | D |
| Rated voltage | 600 V | 600 V | - |
| Rated current | 30 A  | 30 A  | - |

### Connection data

|                            |   |   |   |
|----------------------------|---|---|---|
| Clamping units             | 8 | <b>Connection 1</b>                               |   |
| Total number of potentials | 4 | Connection technology                             | CAGE CLAMP®                               |
| Number of connection types | 2 | Actuation type                                    | Lever                                     |
| Number of levels           | 1 | Solid conductor                                   | 1.5 ... 16 mm <sup>2</sup> / 16 ... 6 AWG |
|                            |   | Fine-stranded conductor                           | 1.5 ... 16 mm <sup>2</sup> / 16 ... 6 AWG |
|                            |   | Fine-stranded conductor; with insulated ferrule   | 1.5 ... 10 mm <sup>2</sup>                |
|                            |   | Fine-stranded conductor; with uninsulated ferrule | 1.5 ... 10 mm <sup>2</sup>                |
|                            |   | Strip length                                      | 12 ... 13 mm / 0.47 ... 0.51 inches       |
|                            |   | Pole number                                       | 4   |

### Physical data

|             |                        |
|-------------|------------------------|
| Pin spacing | 11.5 mm / 0.453 inches |
| Width       | 65.1 mm / 2.563 inches |
| Height      | 48.6 mm / 1.913 inches |
| Depth       | 78.9 mm / 3.106 inches |

### Mechanical data

|                         |                                       |
|-------------------------|---------------------------------------|
| Housing sheet thickness | 3 ... 3 mm / 0.118 ... 0.118 inches   |
| Mounting type           | Locking claw<br>Feed-through mounting |

### Material data

|                                    |  |
|------------------------------------|--|
| Note (material data)               | <a href="#">Information on material specifications can be found here</a> |
| Color                              | gray   |
| Material group                     | I  |
| Insulation material (main housing) | Polyamide (PA66)   |
| Flammability class per UL94        | V0   |
| Clamping spring material           | Chrome-nickel spring steel (CrNi)  |
| Contact material                   | Electrolytic copper (E <sub>Cu</sub> )                                   |
| Contact Plating                    | Tin  |
| Fire load                          | 2.744 MJ   |
| Weight                             | 121.5 g  |

### Environmental requirements

|                         |                 |
|-------------------------|-----------------|
| Limit temperature range | -60 ... +105 °C |
| Processing temperature  | -35 ... +60 °C  |

### Commercial data

|                       |                                |
|-----------------------|--------------------------------|
| Product Group         | 4 (Printed Circuit Connectors) |
| eCl@ss 10.0           | 27-14-11-34                    |
| eCl@ss 9.0            | 27-14-11-34                    |
| ETIM 8.0              | EC001283                       |
| ETIM 7.0              | EC001283                       |
| PU (SPU)              | 15 pcs                         |
| Packaging type        | Bag                            |
| Country of origin     | CN                             |
| GTIN                  | 4050821148777                  |
| Customs tariff number | 85369010000                    |

### Environmental Product Compliance

|   |  |
|---|--|
| REACH Candidate List Substance            | Perfluorobutane sulfonic acid (PFBS) and its salts |
| RoHS Compliance Status                    | Compliant, No Exemption                            |
| SCIP notification number (Austria)        | 0d734595-b959-4481-9e24-30848b1e4c59               |
| SCIP notification number (Belgium)        | 9541b29a-e66a-4057-8d23-5fc290967632               |
| SCIP notification number (Bulgaria)       | 3734b5be-3528-42b4-8a5a-5dd03bb0cea1               |
| SCIP notification number (Czech Republic) | 55b8ed86-163e-4a8a-b21e-c45d10ae48d4               |
| SCIP notification number (Denmark)        | 8d6b435d-e6df-4a1f-9f1a-4ed8f880bc26               |
| SCIP notification number (Finland)        | ee92680d-3320-41b2-950e-1552139d0615               |
| SCIP notification number (France)         | 82d1ef36-b6a7-4ec7-a933-9ee44eff2a31               |
| SCIP notification number (Germany)        | 53c0bf5c-8b50-4ab0-a882-e0acad435acd               |
| SCIP notification number (Hungary)        | 75a68f21-0f78-446a-84a7-00b131e85d43               |
| SCIP notification number (Italy)          | bccf2cba-dc35-4397-ab96-91173936d8fa               |
| SCIP notification number (Netherlands)    | 2c2b2543-7430-49d7-bd72-5293c711a5a6               |
| SCIP notification number (Poland)         | 87b40070-b129-4cf7-9aab-3462de5f5d5c               |
| SCIP notification number (Romania)        | c0b2317f-ecc7-4117-8873-9a67a067a90c               |
| SCIP notification number (Sweden)         | e495909f-40dd-4a6f-be51-7ceb74fe1f28               |

### Approvals / Certificates

#### General approvals



| Approval                            | Standard      | Certificate Name |
|-------------------------------------|---------------|------------------|
| CCA<br>DEKRA Certification B.V.     | EN 60947      | NTR NL-7760      |
| CCA<br>DEKRA Certification B.V.     | EN 60947      | 71-1082983       |
| CSA<br>DEKRA Certification B.V.     | C22.2 No. 158 | 2059958          |
| UL<br>UL International Germany GmbH | UL 1059       | E45172           |

#### Declarations of conformity and manufacturer's declarations

| Approval   | Standard | Certificate Name |
|--|----------|------------------|
| EU-Declaration of Conformity<br>WAGO GmbH & Co. KG | -        | -                |
| UK-Declaration of Conformity<br>WAGO GmbH & Co. KG | -        | -                |

Downloads

Environmental Product Compliance

Compliance Search

Environmental Product Compliance 828-334



Documentation

Additional Information

Technical Section

03.04.2019

pdf

2027.26 KB



CAD/CAE-Data

CAE data

WSCAD Universe 828-334



1 Compatible Products

1.1 Optional Accessories

1.1.1 Ferrule

1.1.1.1 Ferrule



[Item No.: 216-264](#)

Ferrule; Sleeve for 1.5 mm<sup>2</sup> / AWG 16; insulated; electro-tin plated; electrolytic copper; gastight crimped; acc. to DIN 46228, Part 4/09.90; black



[Item No.: 216-284](#)

Ferrule; Sleeve for 1.5 mm<sup>2</sup> / AWG 16; insulated; electro-tin plated; electrolytic copper; gastight crimped; acc. to DIN 46228, Part 4/09.90; black



[Item No.: 216-289](#)

Ferrule; Sleeve for 10 mm<sup>2</sup> / AWG 8; insulated; electro-tin plated; electrolytic copper; gastight crimped; acc. to DIN 46228, Part 4/09.90; red



[Item No.: 216-209](#)

Ferrule; Sleeve for 10 mm<sup>2</sup> / AWG 8; insulated; electro-tin plated; red



[Item No.: 216-109](#)

Ferrule; Sleeve for 10 mm<sup>2</sup> / AWG 8; un-insulated; electro-tin plated



[Item No.: 216-266](#)

Ferrule; Sleeve for 2.5 mm<sup>2</sup> / AWG 14; insulated; electro-tin plated; electrolytic copper; gastight crimped; acc. to DIN 46228, Part 4/09.90; blue



[Item No.: 216-286](#)

Ferrule; Sleeve for 2.5 mm<sup>2</sup> / AWG 14; insulated; electro-tin plated; electrolytic copper; gastight crimped; acc. to DIN 46228, Part 4/09.90; blue



[Item No.: 216-267](#)

Ferrule; Sleeve for 4 mm<sup>2</sup> / AWG 12; insulated; electro-tin plated; electrolytic copper; gastight crimped; acc. to DIN 46228, Part 4/09.90; gray



[Item No.: 216-287](#)

Ferrule; Sleeve for 4 mm<sup>2</sup> / AWG 12; insulated; electro-tin plated; electrolytic copper; gastight crimped; acc. to DIN 46228, Part 4/09.90; gray



[Item No.: 216-208](#)

Ferrule; Sleeve for 6 mm<sup>2</sup> / AWG 10; insulated; electro-tin plated; electrolytic copper; gastight crimped; acc. to DIN 46228, Part 4/09.90; yellow



[Item No.: 216-288](#)

Ferrule; Sleeve for 6 mm<sup>2</sup> / AWG 10; insulated; electro-tin plated; electrolytic copper; gastight crimped; acc. to DIN 46228, Part 4/09.90; yellow

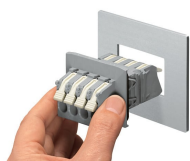


[Item No.: 216-108](#)

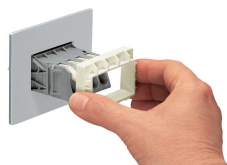
Ferrule; Sleeve for 6 mm<sup>2</sup> / AWG 10; un-insulated; electro-tin plated; silver-colored

## Installation Notes

### Installation



Insert terminal strip from the outside.



Snap the panel thickness adapter on from the inside.



Secure to panel via locking clip.



Mounted feedthrough terminal strip (internal)