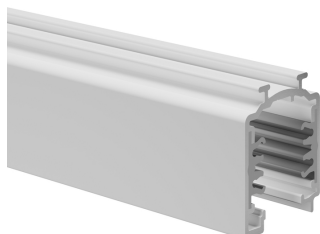


ONETRACK 3PHASE 1M WHITE 9000B-1/W-ST 9200301



Features

- Onetrack 3-phase - 3 circuit track L1/L2/L3/ Neutral/ground 16A/440V, circuits can be controlled individually, aluminum body, suitable for surface and suspended mounting, 1000 x 30.7 x 37.8 mm (L x W x H), white (RAL 9010).

Product Overview

Technical drawings

