



Features

- Ceiling recessed LED Linear luminaire with Micro Prismatic Optic, Dimensions: 1154mm x 90mm x 91mm, Direct, White Body, Warm White LED (3000K), 3030lm, 31W, 98lm/W efficacy, CRI>80, 3 SDCM (3-step MacAdam ellipse), Low LED Flicker (+/-5%), UGR<21, L90B10 at 50,000 hours, Electric Class1, Glow Wire Test 850°C, Can be covered with building insulation of Glass wool type

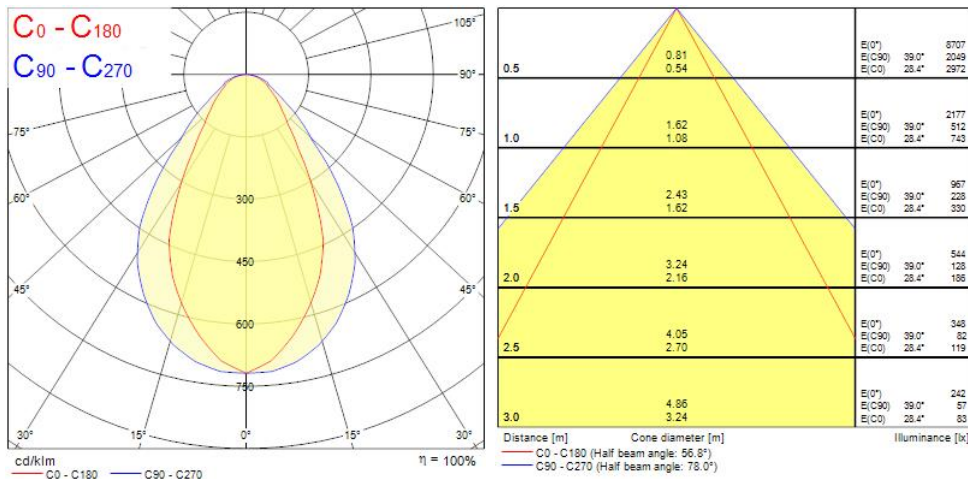
Product Overview

Product name	RANA LINEAR R 3KLM WW MPO
Technology	LED
Cap/Base	N/A
Housing	Steel
Mount	Ceiling recessed mounting
Fixture rating	Enclosed
Environment	Internal
General application	Office, Hospitality, Retail, Education
ETIM Class	EC002892
Fixture luminous flux (lm)	3030
Luminaire efficacy (lm/W)	97.74
LOR (%)	100
Correlated colour temperature (k)	3000
Light colour	Warm White
CRI (Ra)	80
Colour Consistency (SDCM)	3
Colour Variation Initial (SDCM)	3
Glare control	< 21
Photobiological Risk Group	RG0

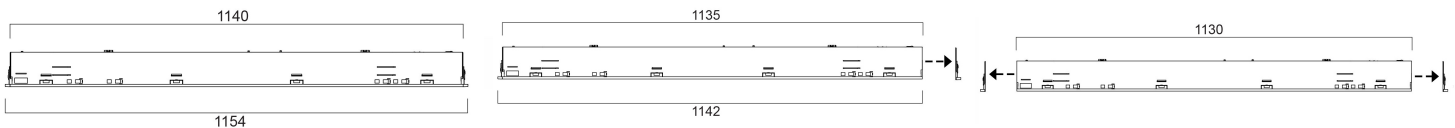
RANA LINEAR R 3KLM WW MPO 0052343

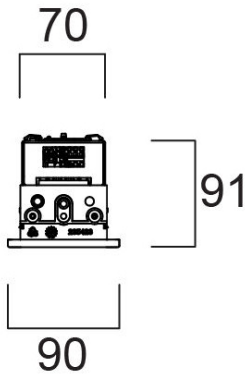
Total power consumption (W)	31
Electrical protection	Class I
Control gear type	Electronic ballast
Dimmable	No
LED Flickering Rate	Ultra low (5% or less)
Housing colour	RAL9016
IP rating	IP20
IK rating	IK07
Product EAN number	5410288523439
Warranty	5 years
Dimming method	N/A

Photometry



Technical drawings





Data table

GENERAL DATA

Product name	RANA LINEAR R 3KLM WW MPO
Technology	LED
Cap/Base	N/A
Housing	Steel
Mount	Ceiling recessed mounting
Fixture rating	Enclosed
Environment	Internal
General application	Office, Hospitality, Retail, Education
Operating temperature range (°C)	-25°C...+40°C
Performance ambient temperature Tq (°C)	25
ETIM Class	EC002892
Warranty	5 years

OPTICAL DATA

Fixture luminous flux (lm)	3030
Luminaire efficacy (lm/W)	97.74
LOR (%)	100
Correlated colour temperature (k)	3000

RANA LINEAR R 3KLM WW MPO 0052343

Light colour	Warm White
CRI (Ra)	80
Colour Variation Initial (SDCM)	3
Colour Consistency (SDCM)	3
Adjustable chromaticity	N
Distribution type	Symmetric
Glare control	< 21
Photobiological Risk Group	RG0

ELECTRICAL DATA

Total power consumption (W)	31
Primary Supply/Product voltage - min (V)	220
Primary Supply/Product voltage - max (V)	240
Lamp power factor	0.95
THD (at 230 V, 50 Hz, full load, at 100% dimming level) \leq xx.x %	20
Electrical protection	Class I
Control gear required	No
Control gear type	Electronic ballast
Dimmable	No
Dimming method	N/A
Drive current (mA)	300
Inrush Current (A)	22
Inrush Duration (μ s)	250
Energy Efficiency Class (A->G) of contained light source	C
Nominal Frequency (Hz)	50/60Hz
LED Flickering Rate	Ultra low (5% or less)
Max. products per 10A C Breaker	40
Max. products per 13A C Breaker	51
Max. products per 16A C Breaker	63
Max. products per 20A C Breaker	80
Max. products per 10A B Breaker	15
Max. products per 13A B Breaker	31
Max. products per 16A B Breaker	25

RANA LINEAR R 3KLM WW MPO 0052343

Max. products per 20A B Breaker	48
Connectable conductor cross section - Min (mm ²)	2.5
Connectable conductor cross section - Max (mm ²)	2.5

LIFETIME DATA

Lifespan L70 B50	60000
Lifespan L70 B20	60000
Lifespan L70 B10	60000
Lifespan L80 B50	60000
Lifespan L80 B20	60000
Lifespan L80 B10	60000
Lifespan L90 B50	60000
Lifespan L90 B20	60000
Lifespan L90 B10	60000

PHYSICAL DATA

Housing colour	RAL9016
IP rating	IP20
IK rating	IK07
Diffuser finish	Prismatic
Diffuser material	PC Polycarbonate
Nominal Product Length (mm)	1150
Nominal Product Width (mm)	90
Nominal Product Height (mm)	91
Weight (kg)	3.05
Recessed Depth (mm)	90

PACKAGING

Product EAN number	5410288523439
Packaging single length / height (cm)	117.0
Packaging single width (cm)	10.5
Packaging single depth (cm)	11.5

RANA LINEAR R 3KLM WW MPO 0052343

DUN14 (inner)	5410288523439
Units per outer package	1
Packaging outer length / height (cm)	117.0
Packaging outer width (cm)	10.5
Packaging outer depth (cm)	11.5

SAFETY DATA

Glow Wire Test (°C)	850
Optimal operating condition (°C)	-25-40
Special purpose lamp	No
Dry applications use only	No
Suitable for household illumination	No