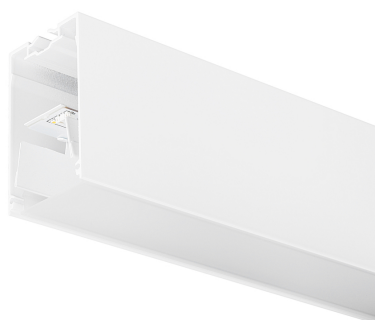


# Concord

MC2 2.4M 4K DALIEM WHT OPAL  
2071486



## Features

- MC2 2.4M 4K DALIEM WHT OPAL LED luminaire, white RAL9016 finishing, direct distribution, trimless detail for a seamless finish, suitable for recessed, semi-recessed, surface-mounted or suspended installation either horizontally or vertically, various accessories available, compact and minimalist design based on the Golden Mean, ideal for offices, meeting rooms, corridors, education facilities, museums and libraries, extruded aluminium body, diffuser: opal, colour temperature: 4000K neutral white, total system power: 37W, total fixture output: 4800lm, emergency output: 147lm, luminaire efficacy: 130lm/W, LOR: 100%, colour rendering: Ra >80, LED Chromacity: 3 step MacAdam ellipse, lifespan: 66,000 hours L90B10, IR/UV free light source without heat radiation, operating voltage: 220-240V / 50-60Hz, drive current: 800mA, electronic driver, DALI dimmable, integral emergency: 3 hour maintained, electrical protection: CLASS I, IP20, suitable for internal environment only.

## Product Overview

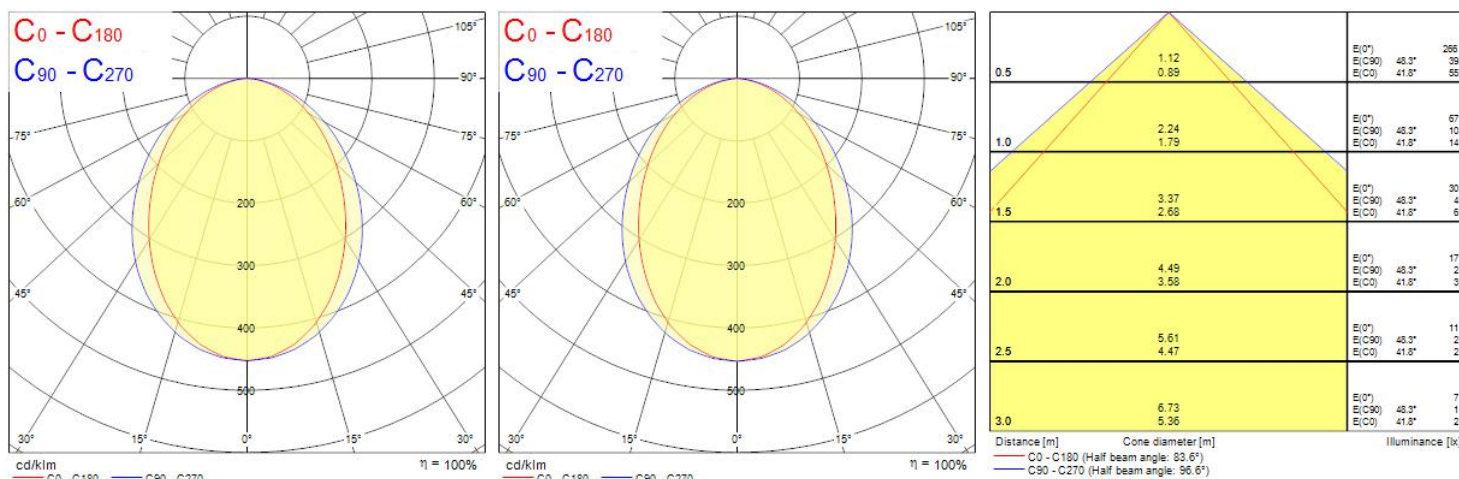
<b>Product name</b>	MC2 2.4M 4K DALIEM WHT OPAL
<b>Technology</b>	LED (3 SDCM)
<b>Cap/Base</b>	N/A
<b>Housing</b>	Aluminium
<b>Mount</b>	Ceiling recessed mounting
<b>General application</b>	Education, Hospitality, Office, Retail
<b>ETIM Class</b>	EC002892
<b>Fixture luminous flux (lm)</b>	4800
<b>Luminaire efficacy (lm/W)</b>	130
<b>LOR (%)</b>	100
<b>Correlated colour temperature (k)</b>	4000

# Concord

## MC2 2.4M 4K DALIEM WHT OPAL 2071486

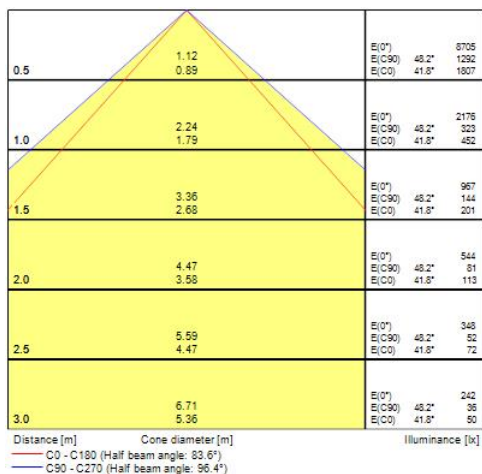
Light colour	Neutral White
CRI (Ra)	80
Colour Variation Initial (SDCM)	3
Glare control	< 24
Photobiological Risk Group	RG0
Luminous flux (emergency) (lm)	147
Luminous flux (emergency) (lm)	147
Total power consumption (W)	37
Electrical protection	Class I
Control gear type	Electronic ballast
Dimmable	Yes
Minimum dimming level (%)	1
Housing colour	White
IP rating	IP20
IK rating	IK03
Product EAN number	5025768714865
Warranty	5 years
Dimming method	DALI

## Photometry

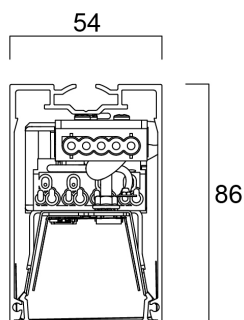


# Concord

## MC2 2.4M 4K DALIEM WHT OPAL 2071486



## Technical drawings



## Data table

### GENERAL DATA

Product name	MC2 2.4M 4K DALIEM WHT OPAL
Technology	LED (3 SDCM)
Cap/Base	N/A
Housing	Aluminium

# Concord

## MC2 2.4M 4K DALIEM WHT OPAL 2071486

Mount	Ceiling recessed mounting
General application	Education, Hospitality, Office, Retail
Operating temperature range (°C)	1°C...+35°C
Performance ambient temperature Tq (°C)	25
ETIM Class	EC002892
Warranty	5 years

### OPTICAL DATA

Fixture luminous flux (lm)	4800
Luminaire efficacy (lm/W)	130
LOR (%)	100
Correlated colour temperature (k)	4000
Light colour	Neutral White
CRI (Ra)	80
Colour Variation Initial (SDCM)	3
Adjustable chromaticity	N
Luminous Intensity (cd)	2176
Distribution type	Symmetric
Glare control	< 24
Photobiological Risk Group	RG0
Luminous flux (emergency) (lm)	147
Luminous flux (emergency) (lm)	147
Emergency duration (h)	3

### ELECTRICAL DATA

Total power consumption (W)	37
Primary Supply/Product voltage - min (V)	220.0
Primary Supply/Product voltage - max (V)	240.0
Lamp power factor	0.98
THD (at 230 V, 50 Hz, full load, at 100% dimming level) ≤ xx.x %	6.1
Electrical protection	Class I
Control gear required	No

# Concord

## MC2 2.4M 4K DALIEM WHT OPAL 2071486

<b>Control gear type</b>	Electronic ballast
<b>Dimmable</b>	Yes
<b>Dimming method</b>	DALI
<b>Minimum dimming level (%)</b>	1
<b>Min. drive current (mA)</b>	350
<b>Max. drive current (mA)</b>	1050
<b>Drive current - Range (mA)</b>	350mA / 1050mA
<b>Inrush Current (A)</b>	40
<b>Inrush Duration (µs)</b>	178
<b>Energy Efficiency Class (A-&gt;G) of contained light source</b>	C, C(more than 1 Light Source)
<b>Nominal Frequency (Hz)</b>	50/60Hz
<b>Max. products per 10A C Breaker</b>	15
<b>Max. products per 13A C Breaker</b>	20
<b>Max. products per 16A C Breaker</b>	23
<b>Max. products per 20A C Breaker</b>	30
<b>Max. products per 10A B Breaker</b>	9
<b>Max. products per 13A B Breaker</b>	12
<b>Max. products per 16A B Breaker</b>	14
<b>Max. products per 20A B Breaker</b>	18
<b>Connectable conductor cross section - Max (mm<sup>2</sup>)</b>	1.5

### LIFETIME DATA

<b>Lifespan L70 B50</b>	120000
<b>Lifespan L80 B20</b>	92500
<b>Lifespan L90 B10</b>	66000

### PHYSICAL DATA

<b>Housing colour</b>	White
<b>IP rating</b>	IP20
<b>IK rating</b>	IK03
<b>Diffuser finish</b>	Opal
<b>Diffuser material</b>	PC Polycarbonate

# Concord

## MC2 2.4M 4K DALIEM WHT OPAL 2071486

Reflector finish	Not Applicable
Nominal Product Length (mm)	2400
Nominal Product Width (mm)	54
Nominal Product Height (mm)	86
Weight (kg)	5.56
Recessed Depth (mm)	136

### PACKAGING

Product EAN number	5025768714865
Packaging single length / height (cm)	256.0
Packaging single width (cm)	15.0
Packaging single depth (cm)	15.0
DUN14 (inner)	05025768714865
Units per outer package	1
Packaging outer length / height (cm)	256.0
Packaging outer width (cm)	15.0
Packaging outer depth (cm)	15.0

### SAFETY DATA

Glow Wire Test (°C)	650
Optimal operating condition (°C)	1-35
Special purpose lamp	No
Dry applications use only	No
Suitable for household illumination	No