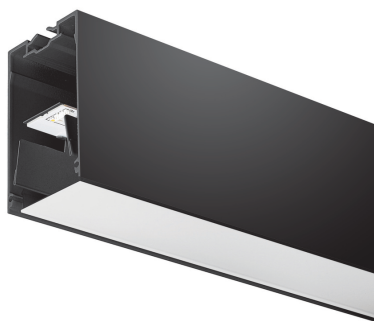


# Concord

MC2 1.2M 3K DALI BLK OPAL  
2071579



## Features

- MC2 1.2M 3K DALI BLK OPAL LED luminaire, black RAL9005 finishing, direct distribution, trimless detail for a seamless finish, suitable for recessed, semi-recessed, surface-mounted or suspended installation either horizontally or vertically, various accessories available, compact and minimalist design based on the Golden Mean, ideal for offices, meeting rooms, corridors, education facilities, museums and libraries, extruded aluminium body, diffuser: opal, colour temperature: 3000K warm white, total system power: 18W, total fixture output: 2300lm, luminaire efficacy: 128lm/W, LOR: 100%, colour rendering: Ra >80, LED Chromacity: 3 step MacAdam ellipse, lifespan: 66,000 hours L90B10, IR/UV free light source without heat radiation, operating voltage: 220-240V / 50-60Hz, drive current: 800mA, electronic driver, DALI dimmable, electrical protection: CLASS I, IP20, suitable for internal environment only.

## Product Overview

Cap/Base

N/A

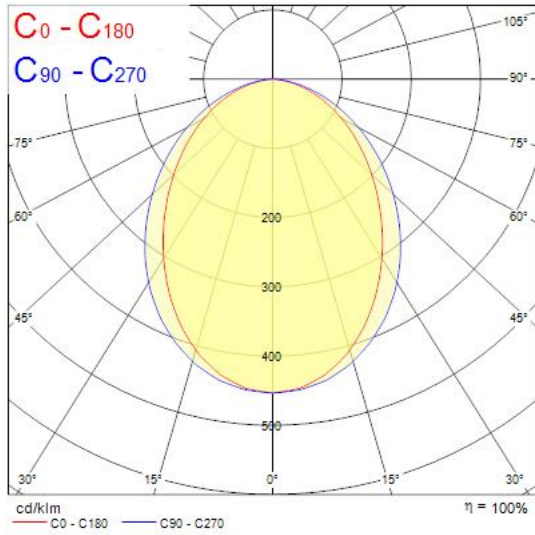
Control gear type

Electronic ballast

# Concord

MC2 1.2M 3K DALI BLK OPAL  
2071579

## Photometry



## Technical drawings

