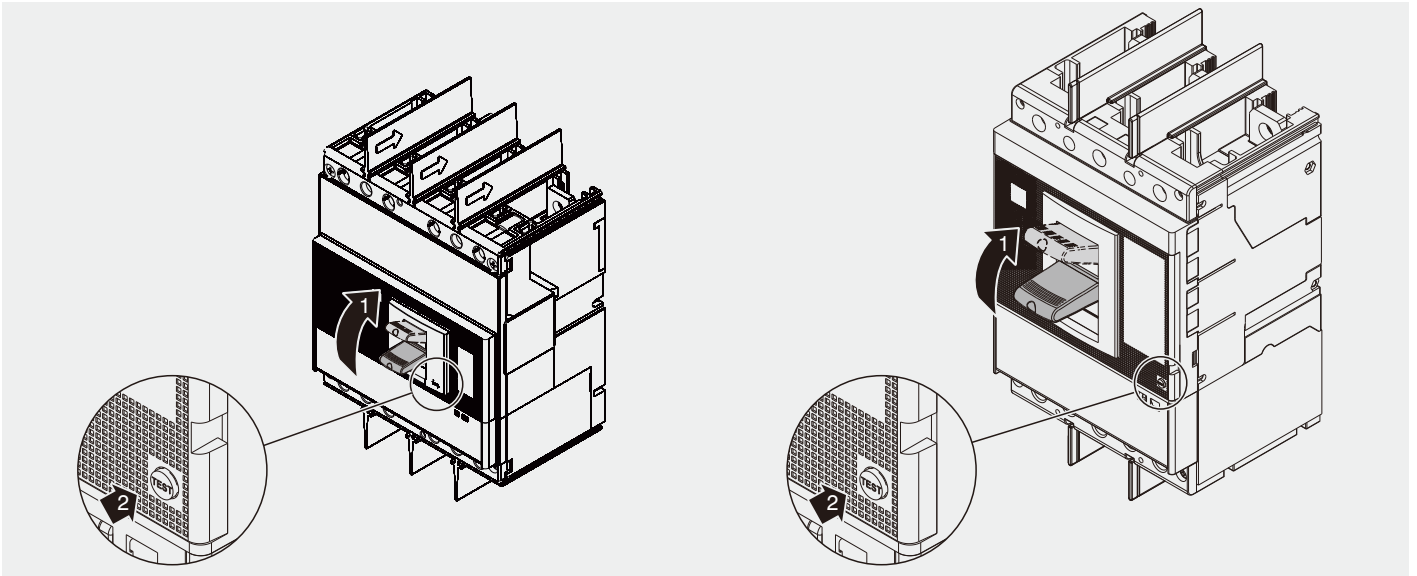


SACE Tmax XT

- MIR - Interblocco meccanico orizzontale tra due interruttori XT4-XT5**
- MIR - Mechanical interlock across two orizontal XT4-XT5 circuit breakers**
- MIR - Mechanische Verriegelung zwischen zwei leistungsschaltern waagrecht XT4-XT5**
- MIR - Interverrouillage mécanique entre deux disjoncteurs horizontal XT4-XT5**
- MIR - Enclavamiento mecanico entre dos interruptores horizontal XT4-XT5**
- MIR - 机械联锁 XT4-XT5**

XT4, XT5



Per interruttori muniti di comando a motore ad accumulazione di energia o comando a motore diretto fornire sempre le seguenti applicazioni:
 1.commutatore aperto/chiuso e 1 segnale di scattato rele; 2.schema elettrico 1SDM000081R0001; 3.blocco chiave.

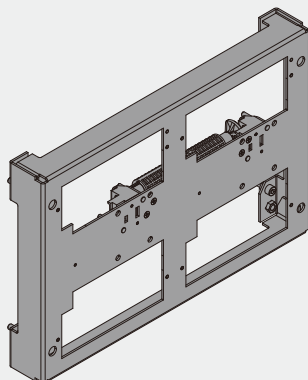
Always provide the following applications for circuit-breakers fitted with stored energy operating mechanism or direct-acting motor operator:
 1.open/close change-over contact and one release tripped signal code; 2.circuit diagram 1SDM000081R0001; 3.key lock.

Für Schaltgeräte mit Motorantrieb mit energiespeicherung oder Motorantrieb mit Direktwirkung stets folgende zusatzausstattung liefern:
 1.1 Umschalter EIN/AUS und 1 Signal „Auslöser ausgelöst“; 2.Elektrischer Schaltplan 1SDH000081R0001; 3.Schlüsselverriegelung.

Pour les disjoncteurs munis d'une commande par moteur a accumulation d'énergie ou commande par moteur a action direct, fournir toujours les applications suivantes:
 1.1 commutateur ouvert/fermé et 1 signal de déclencheur déclenché; 2.schema électrique 1SDM000081R0001; 3.verrouillage par clef.

Para interruptores con mando a motor con acumulacion de energia o mando a motor de accion directa proporcionar siempre las siguiente aplicaciones:
 1.1 conmutador abierto/cerrado y 1 señal de disparo relé; 2.esquema eléctrico 1SDM000081R0001; 3.bloqueo a llave.

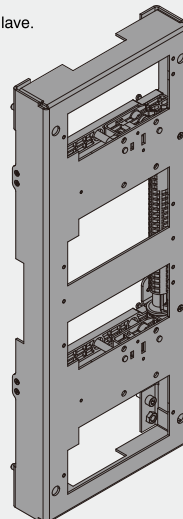
当断路器配合安装储能电动操作机构时，可提供下列：
 1，分闸/合闸辅助触头和一个脱扣器脱扣信号；2，电路图1SDM000081R0001；3，钥匙锁



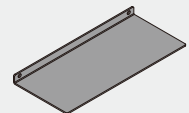
MIR - H

- x1
- x1
- x2
- x2
- x4 M8
- x4 M8 x 20

MIR - V



- x1
- x1
- x2
- x2
- x4 M8
- x4 M8 x 20
- x2 M5 x 8



Piastre di accoppiamento da ordinare separatamente (n° 2 piastre per interblocco)

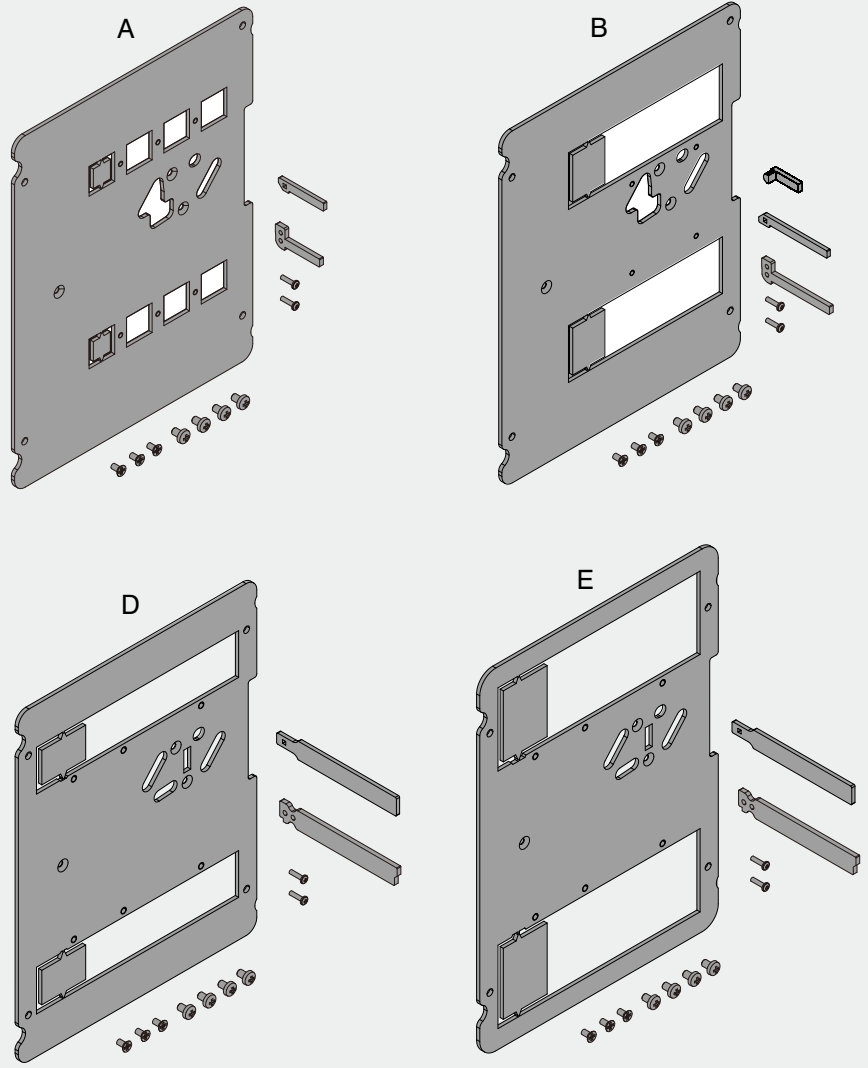
Connecting plates to arrange separately (nr. Interlock plates)

Einzel zu bestellende Kaschierplatten (2 St Platten für Verriegelung)

Plaques d'accouplement à commander séparément (n° 2 plaques pour interverrouillage)

Planchas de emparejamento para ordenar por separado (N° 2 planchas por cada enclavamiento)

安装板
需另行选购
(按配置选择两款型号)



	N° PIASTRE	N° PATES	N° PLATTEN	N° PLAQUES	N° PLACAS	安装板序号
	A	B	C	D	E	
Configurazione Configuration Konfiguration Configuration Configuraciòn 配置	XT4 (F)	XT4 (P/W)	XT5-400/630 (F)	XT5-400 (P/W)	XT5-630 (P/W)	XT5-630 (P/W)
XT4(XT5)	XT4(F) - XT5-400/630(F)		1			
	XT4(F) - XT5-400(P/W)			1		
	XT4(F) - XT5-630(P/W)					1
	XT4(P/W) - XT5-400/630(F)	1	1			
	XT4(P/W) - XT5-400(P/W)	1			1	
	XT4(P/W) - XT5-630(P/W)	1				1
XT5(XT5)	XT5-400/630(F) - XT5-400/630(F)		2			
	XT5-400/630(F) - XT5-400(P/W)		1	1		
	XT5-400/630(F) - XT5-630(P/W)		1			1
	XT5-400(P/W) - XT5-400(P/W)			2		
	XT5-400(P/W) - XT5-630(P/W)			1		1
	XT5-630(P/W) - XT5-630(P/W)					2

(F) Interruttore fisso
Fixed circuit breaker
Festen Kreis








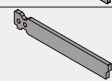
Disjoncteur fixe
Interruttore fijo
固定式断路器

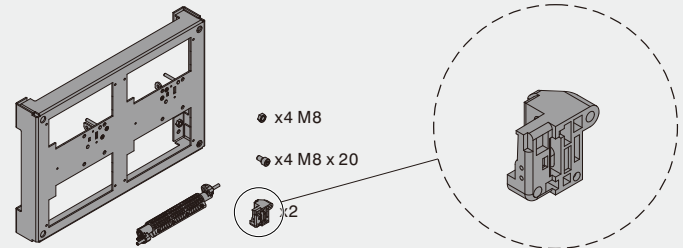
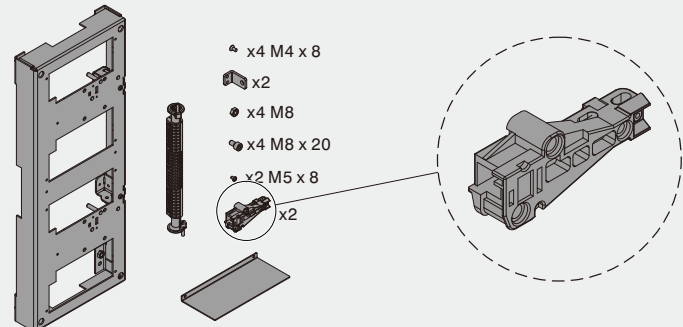
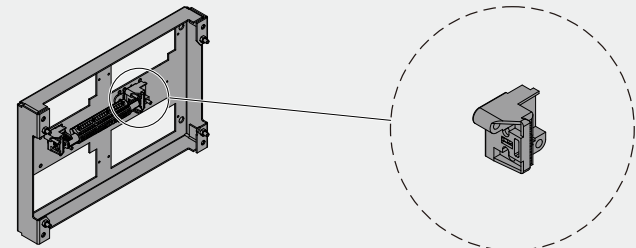
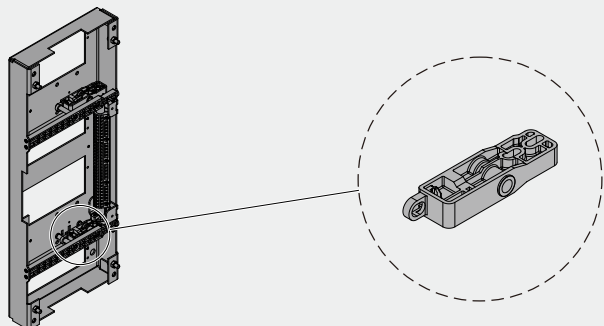
(P) Interruttore rimovibile
Plug-in circuit breaker
Abnehmbar festen

Disjoncteur débrouchable
Interruttore enchufable
插入式断路器

(W) Interruttore estraibile
Withdrawable circuit breaker
Extrahierbare festen

Disjoncteur extractible
Interruttore extraibile
抽出式断路器

Pushrod	Plate A	Plate B	Plate C	Plate D, E
Type I				
Type II				

	Using Pushrod Type II	Start from step 2 to 50, (Ignore step 26 to 45)
		
	Using Pushrod Type I	Start from step 26 to 50
		

Check the appearance of the MIR, distinguish between different types of pushrods (I & II), and then find the corresponding installation steps.

Controllare l'aspetto del MIR, distinguere i diversi tipi di pushrod (I & II), quindi trovare i passaggi di installazione corrispondenti.

Überprüfen Sie das Aussehen des MIR, unterscheiden Sie die verschiedenen Typen von Stangen (I & II), und finden Sie dann die entsprechenden Installationsschritte.

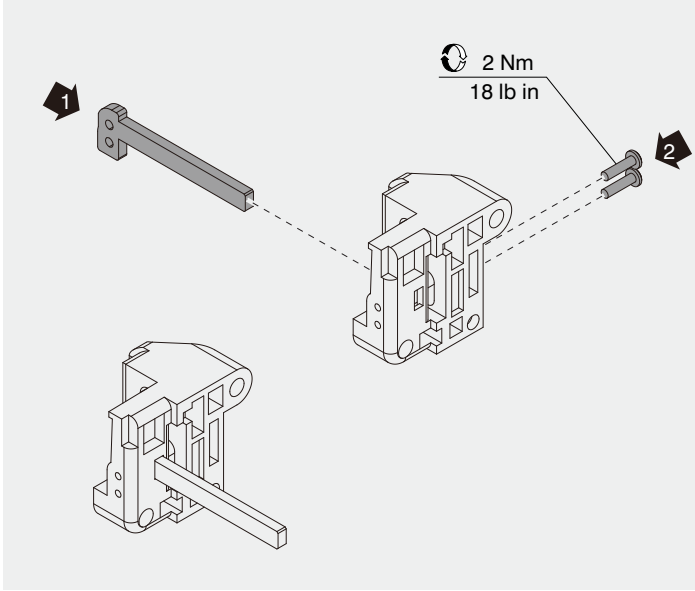
Vérifiez l'apparence du MIR, distinguez les différents types de tiges (I & II), puis trouvez les étapes d'installation correspondantes.

Verifique la apariencia del MIR, distinga entre los diferentes tipos de varillas (I & II) y luego encuentre los pasos de instalación correspondientes.

检查MIR外观，区分不同类型的推杆（ I & II ），然后找到对应的安装步骤。

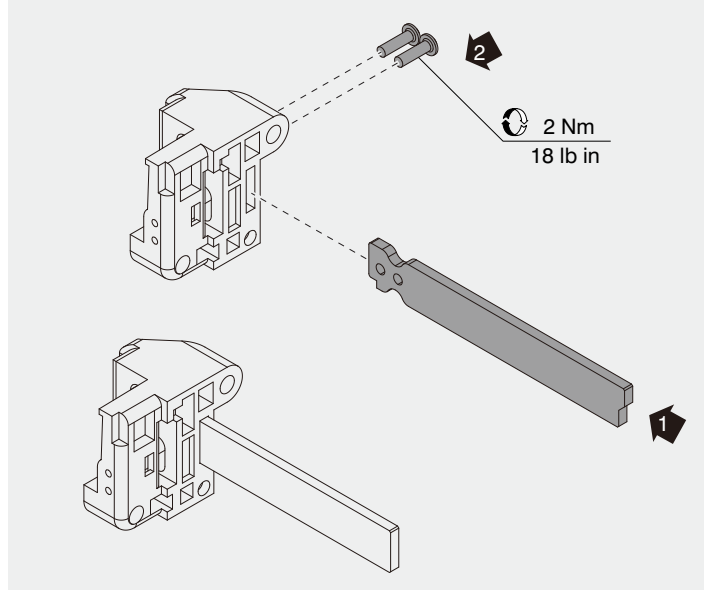
2

XT4 MIR-H (for pushrod II)



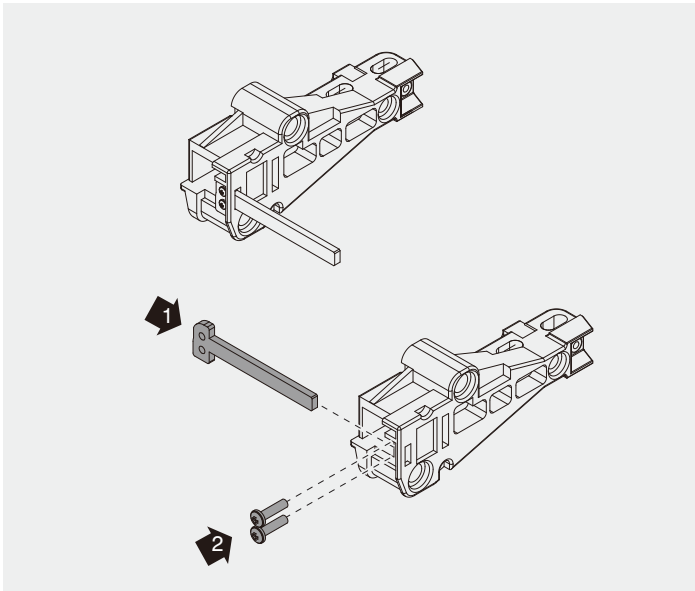
3

XT5 MIR-H (for pushrod II)



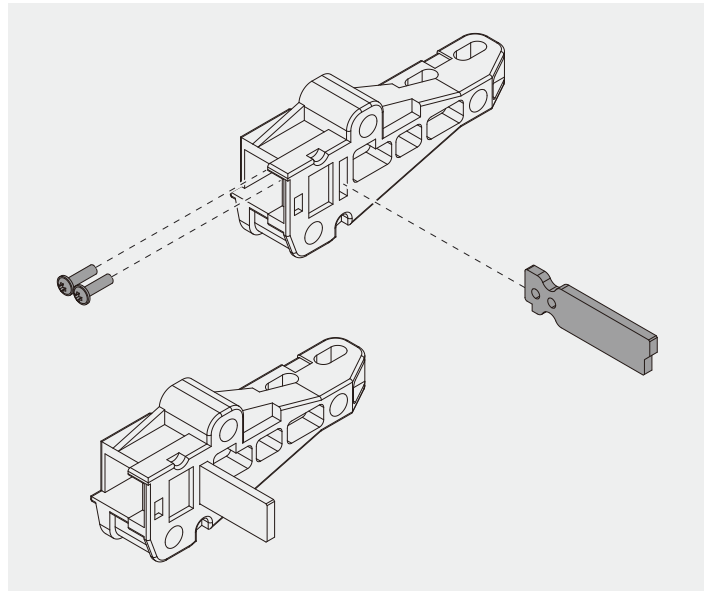
4

XT4 MIR-V (for pushrod II)



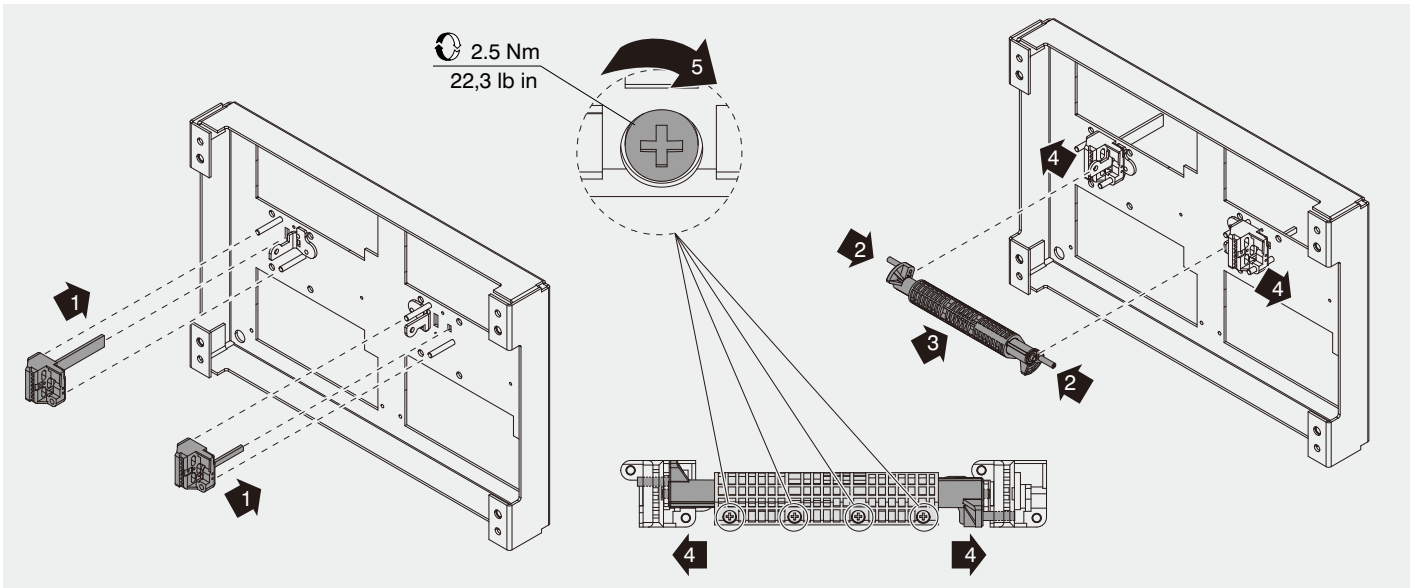
5

XT5 MIR-V (for pushrod II)



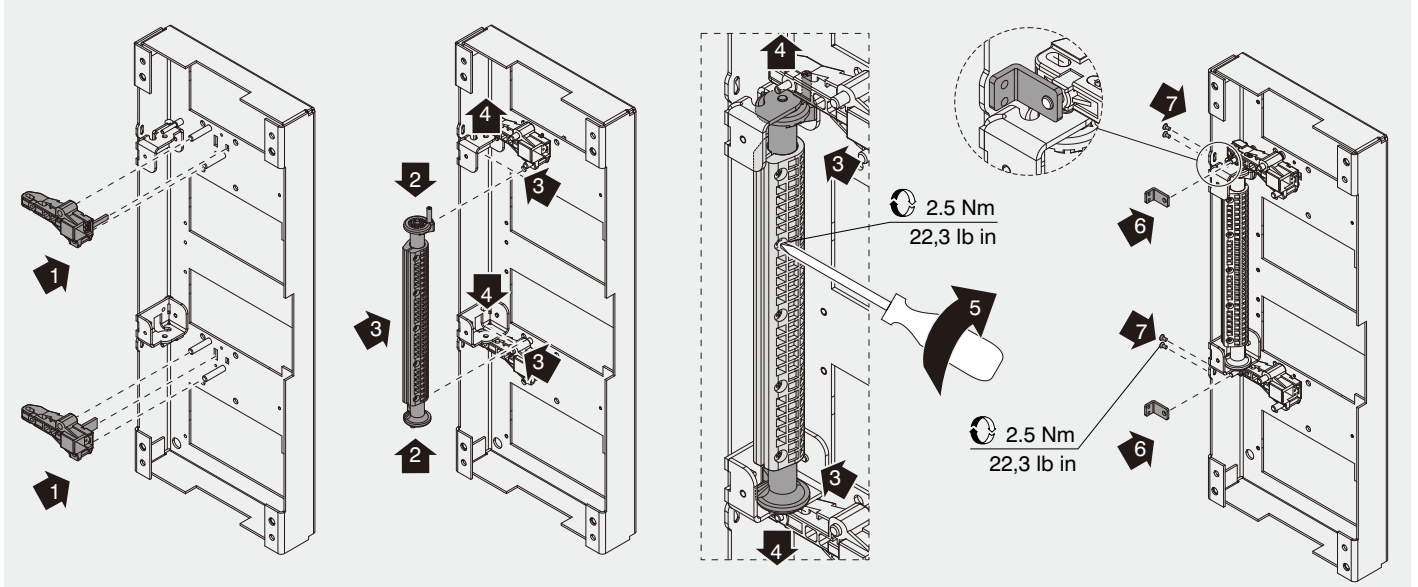
6

Example: MIR-H (for pushrod II)



7

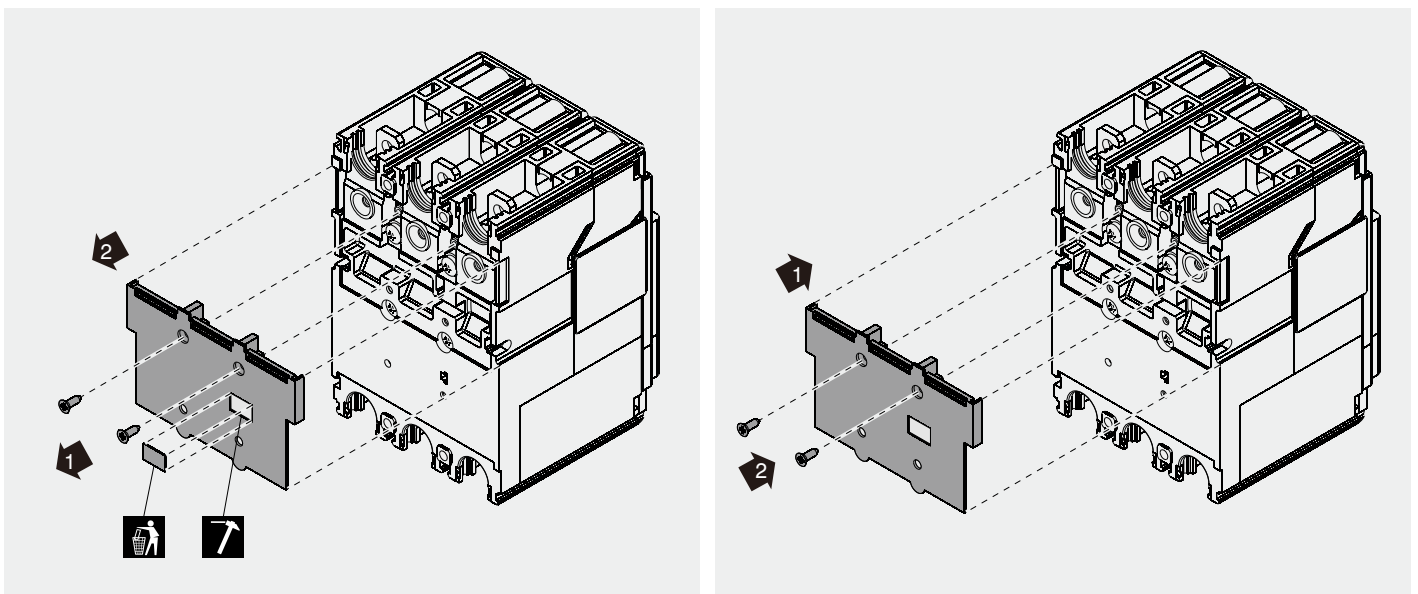
Example: MIR-V (for pushrod II)



8

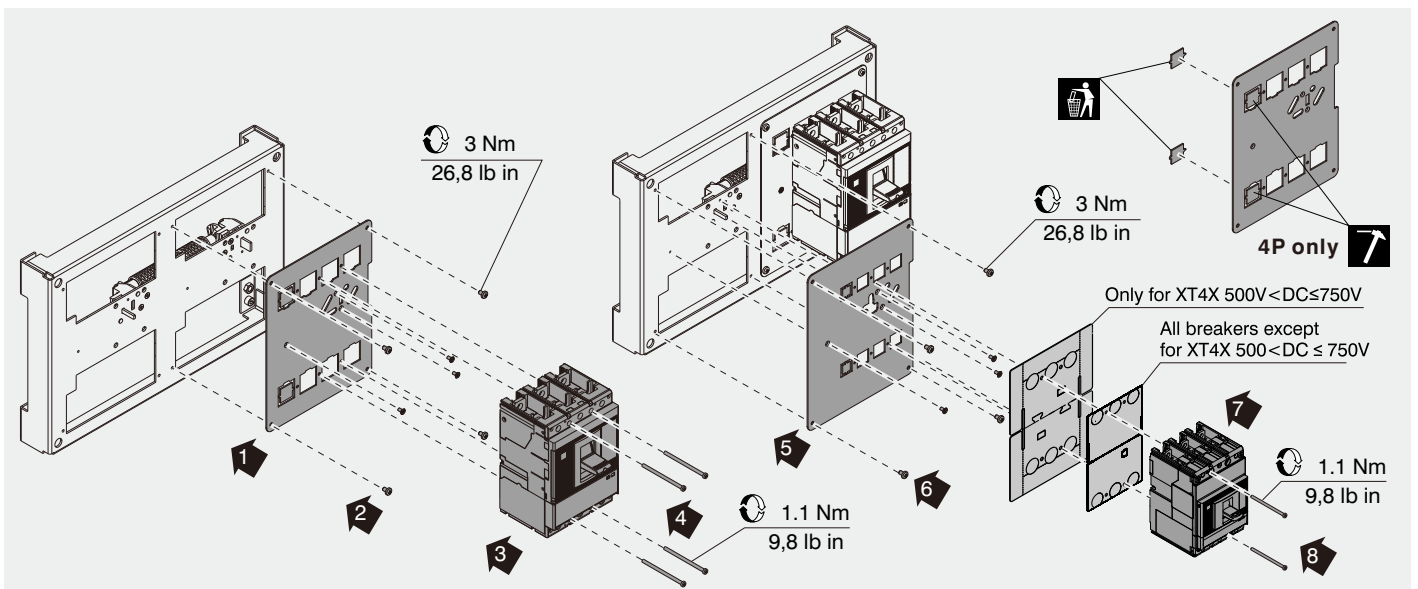
XT4 F (for pushrod II) 9

XT4 F (for pushrod II)



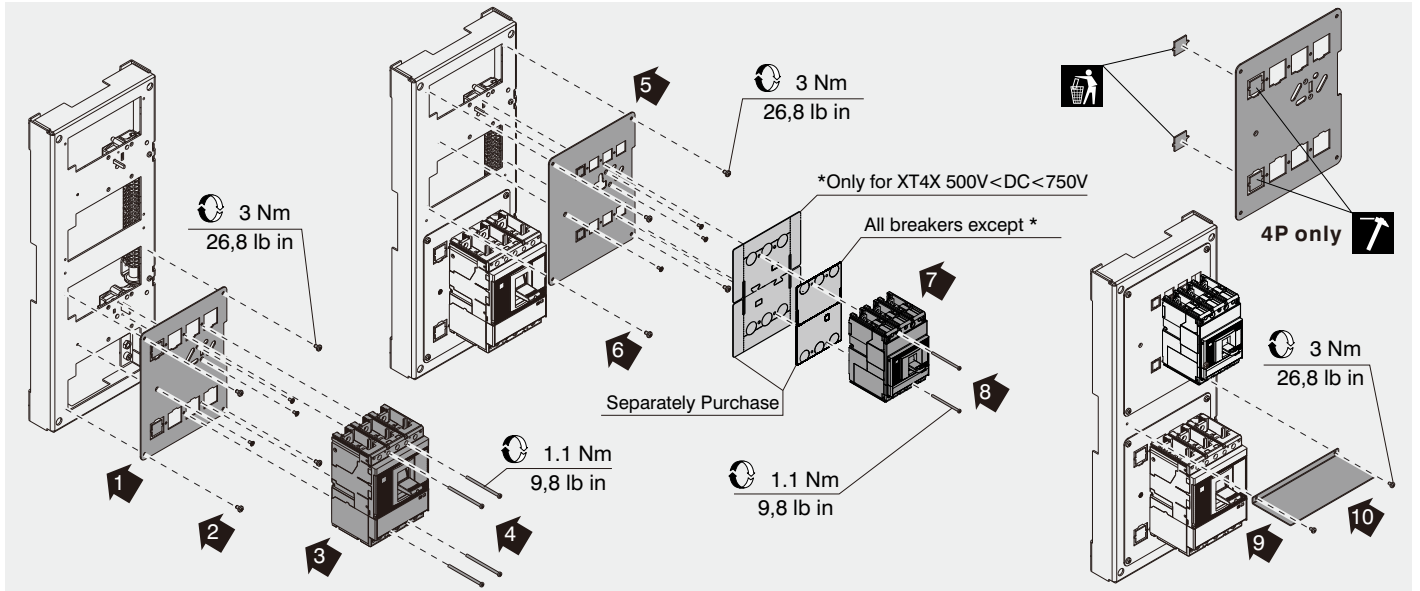
10

Example: XT4 F - XT5 F (MIR-H) (for pushrod II)



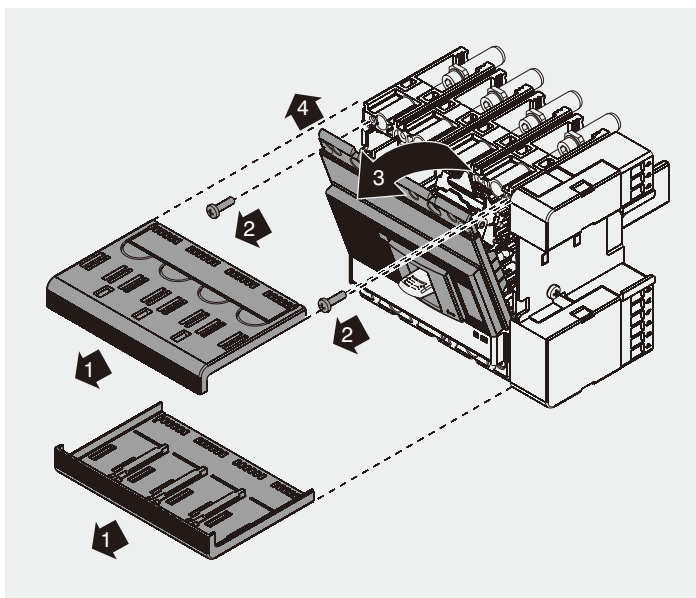
11

Example: XT4 F - XT5 F (MIR-V) (for pushrod II)

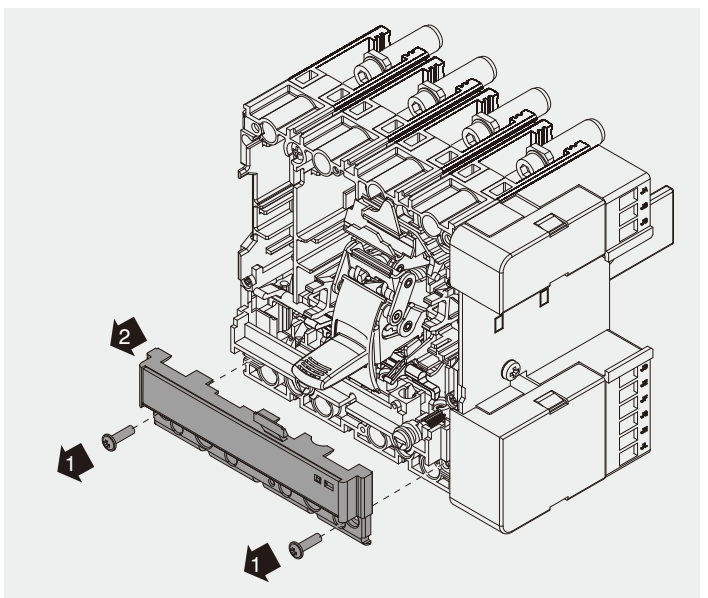


12

XT4 W (for pushrod II) 13

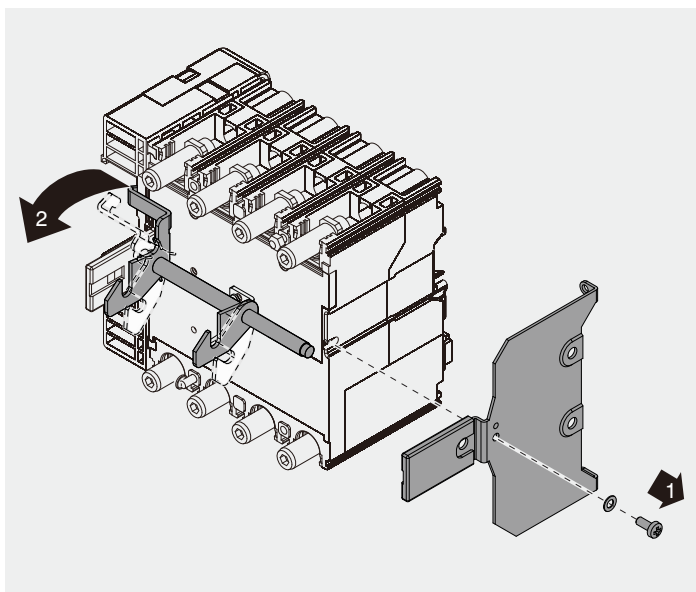


XT4 W (for pushrod II)

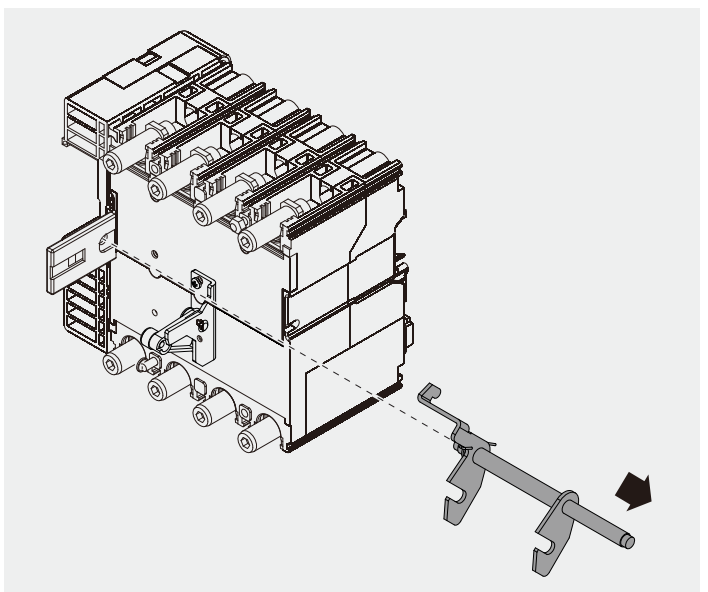


14

XT4 W (for pushrod II) 15

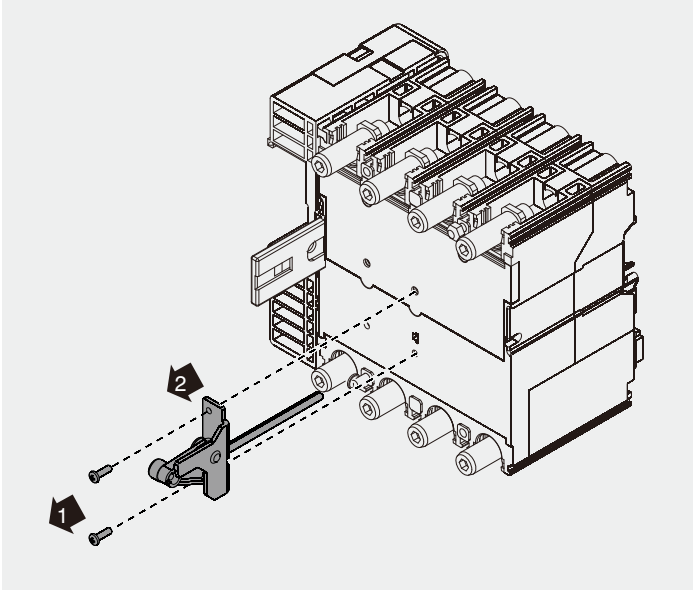


XT4 W (for pushrod II)



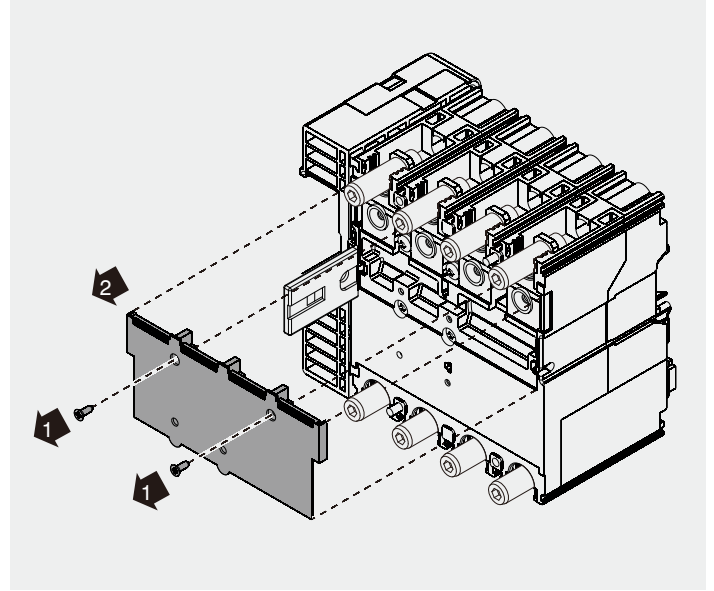
16

XT4 W (for pushrod II)



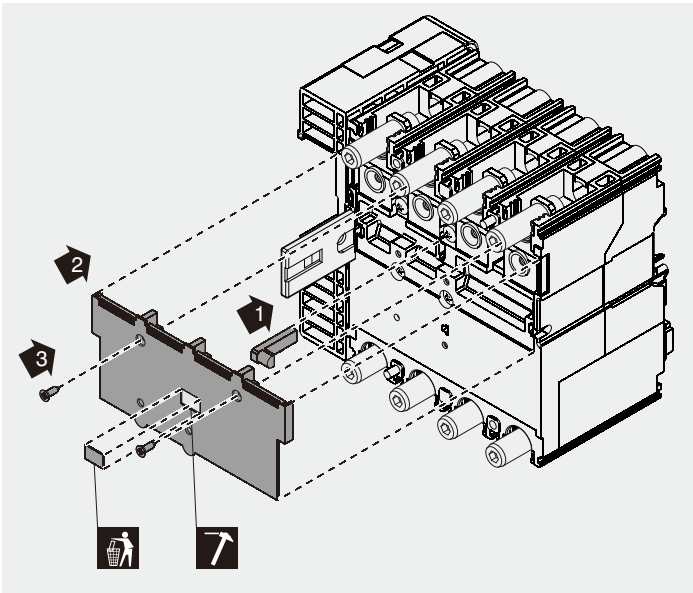
17

XT4 W (for pushrod II)



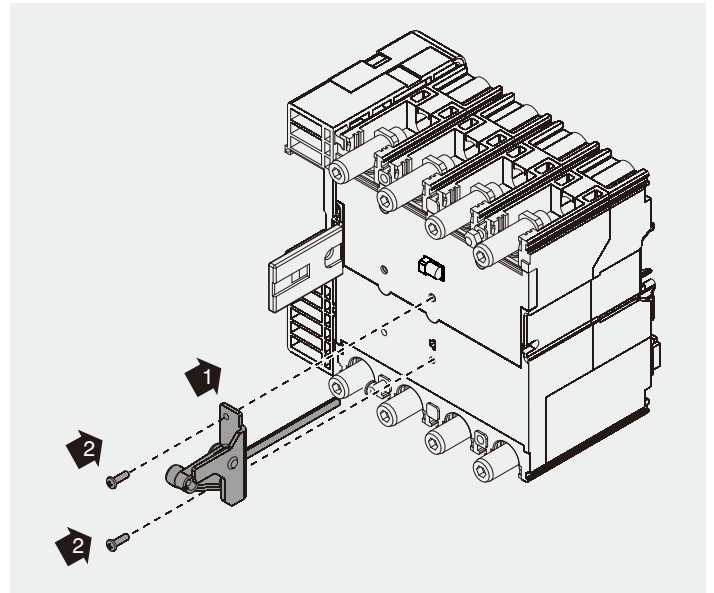
18

XT4 W (for pushrod II)



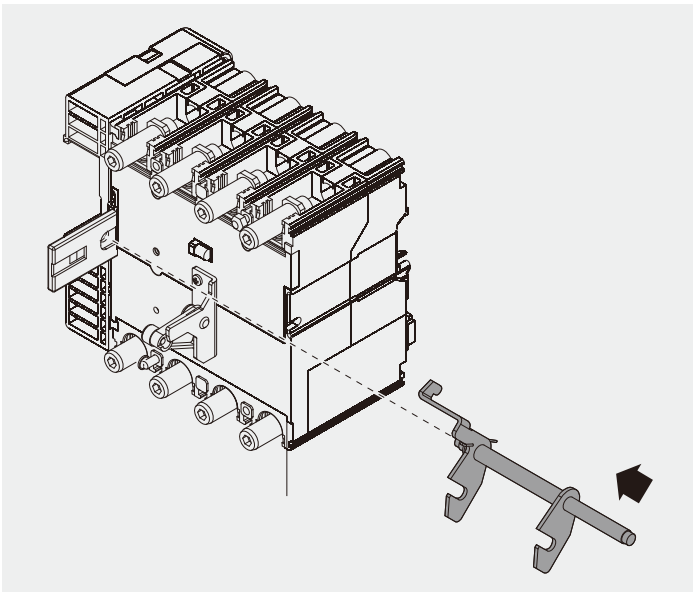
19

XT4 W (for pushrod II)



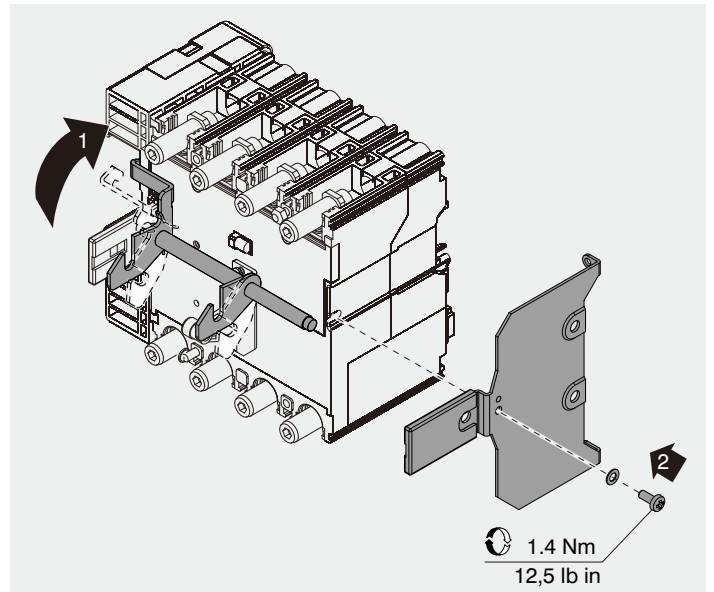
20

XT4 W (for pushrod II)



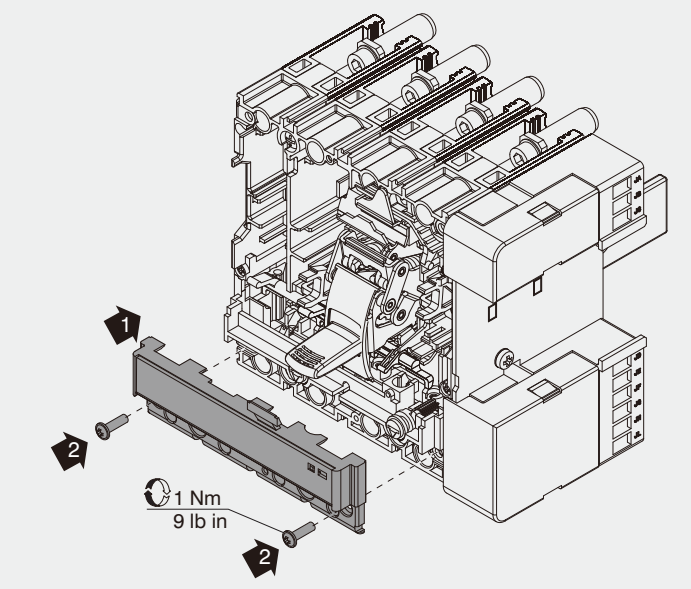
21

XT4 W (for pushrod II)



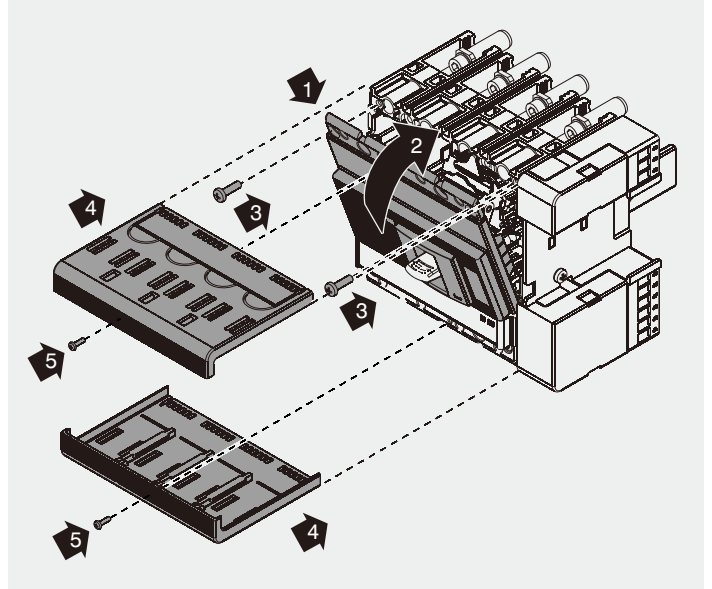
22

XT4 W (for pushrod II)



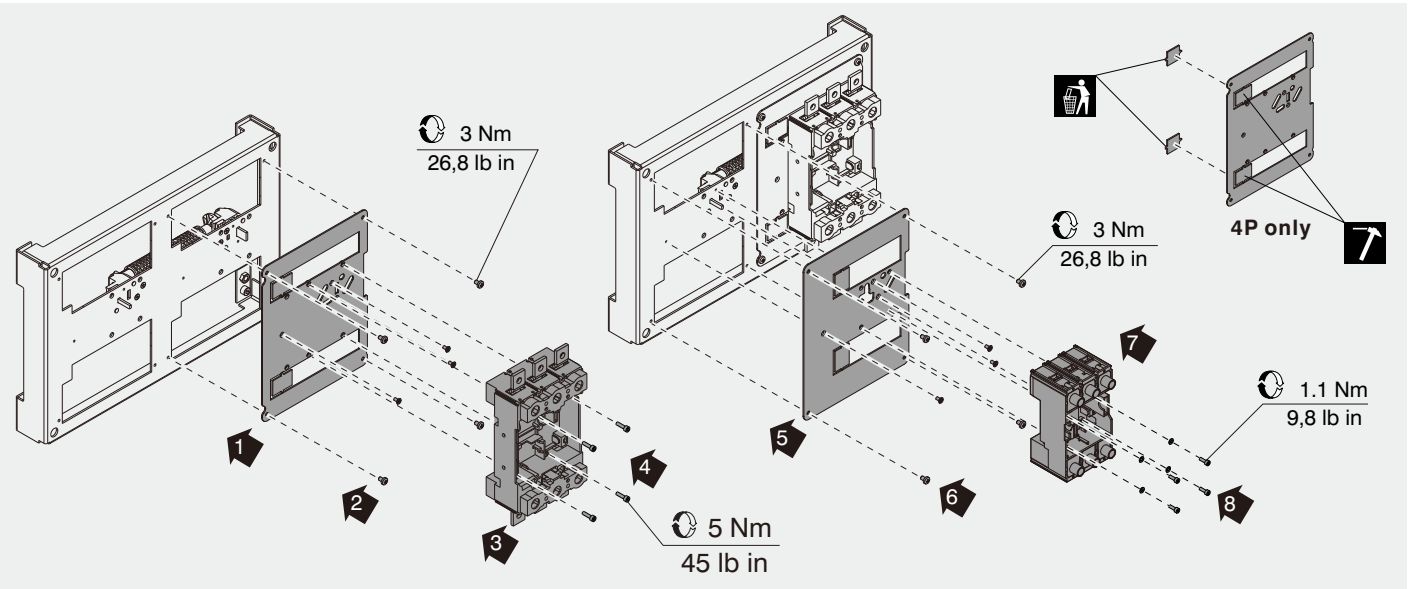
23

XT4 W (for pushrod II)



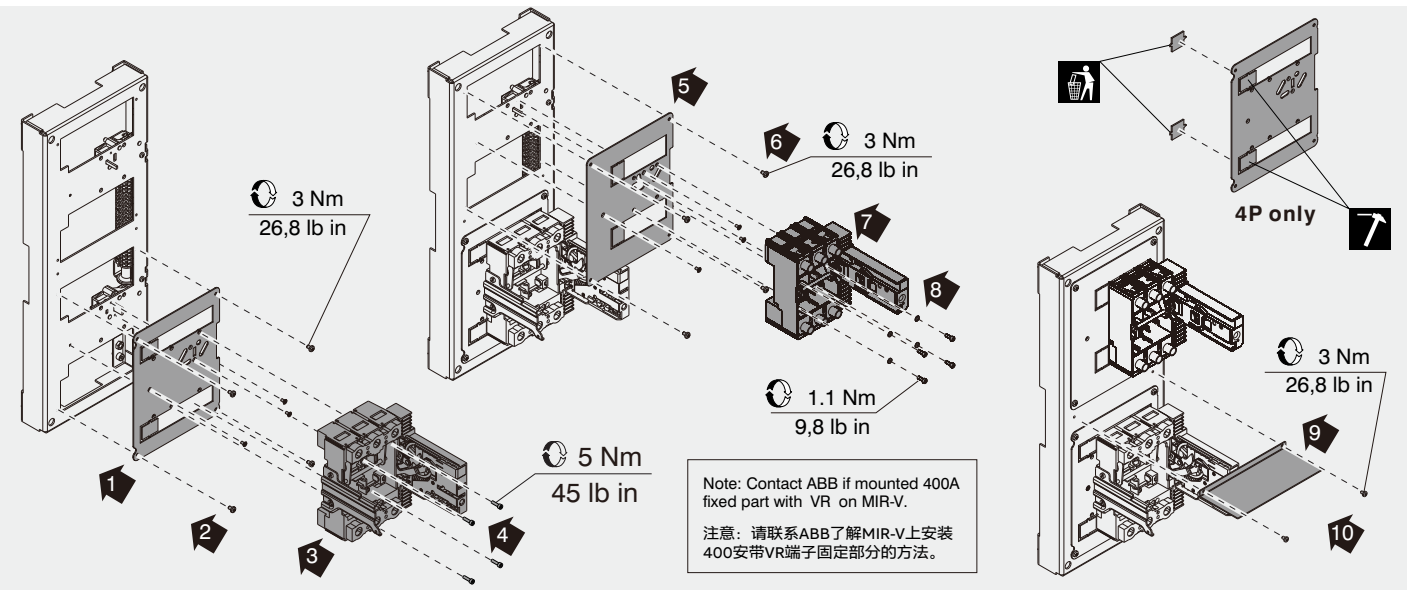
24

Example: XT4 P - XT5 P (MIR-H) (for pushrod II)



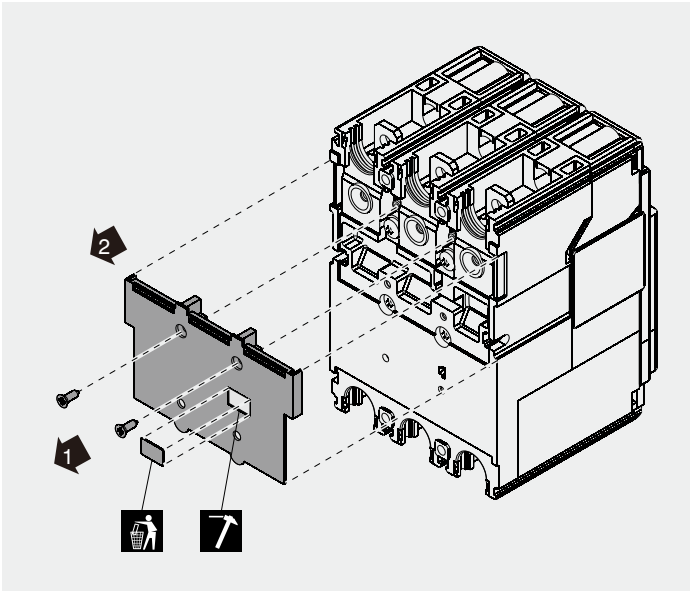
25

Example: XT4 W - XT5 W (MIR-V) (for pushrod II)

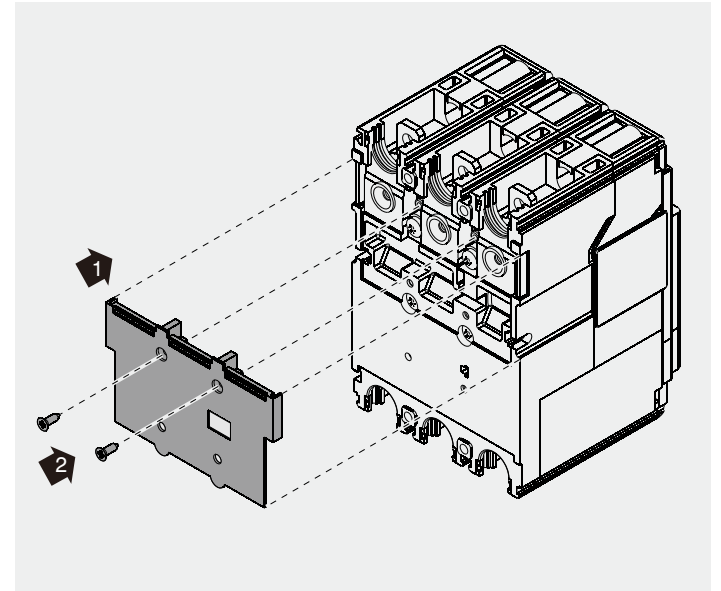


26

XT4 F (for pushrod I)

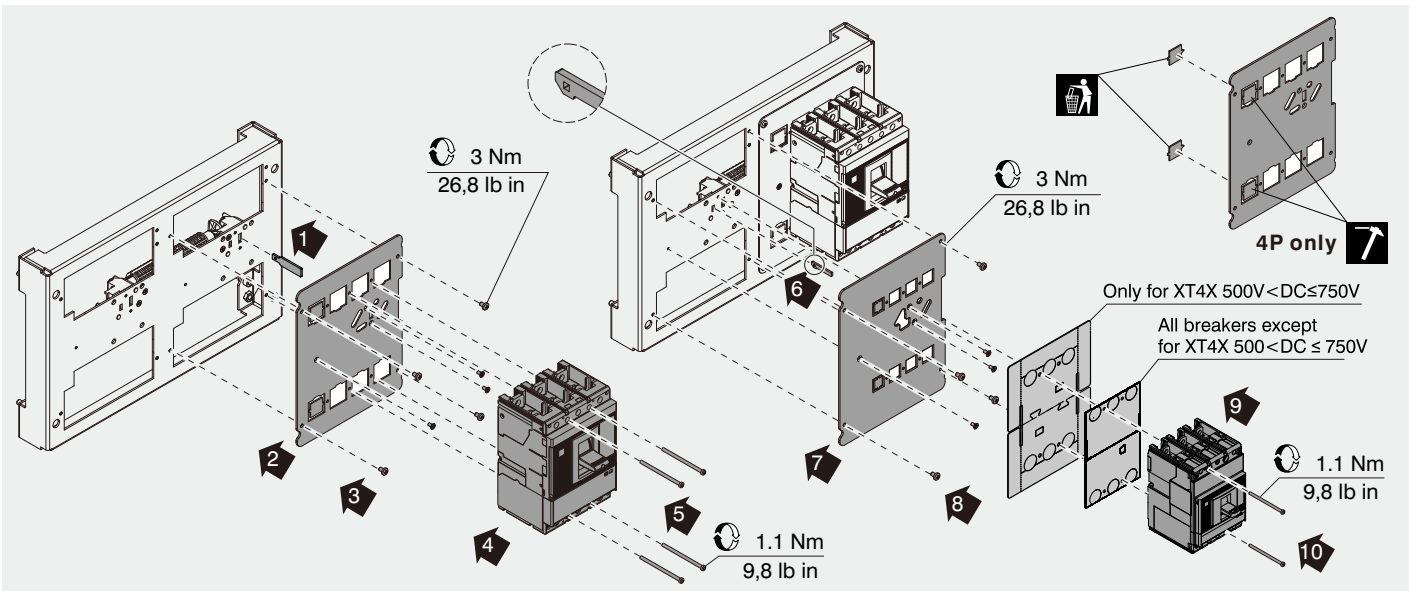


XT4 F (for pushrod I)



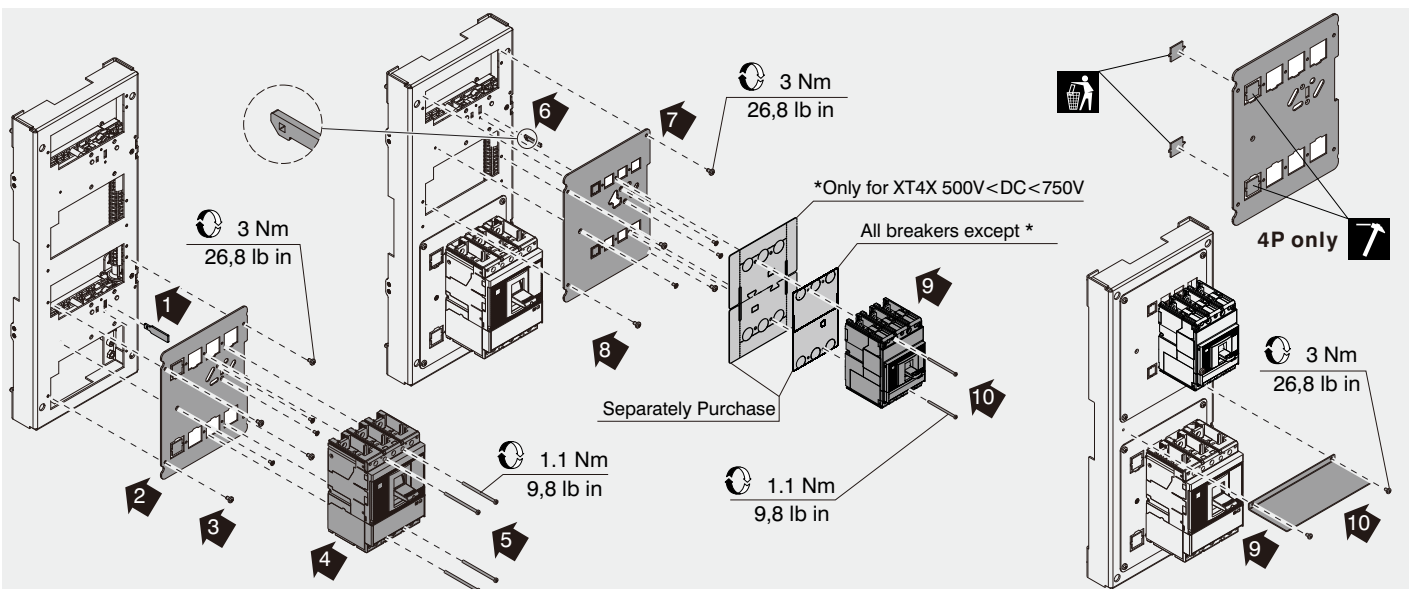
28

Example: XT4 F - XT5 F (MIR-H) (for pushrod I)



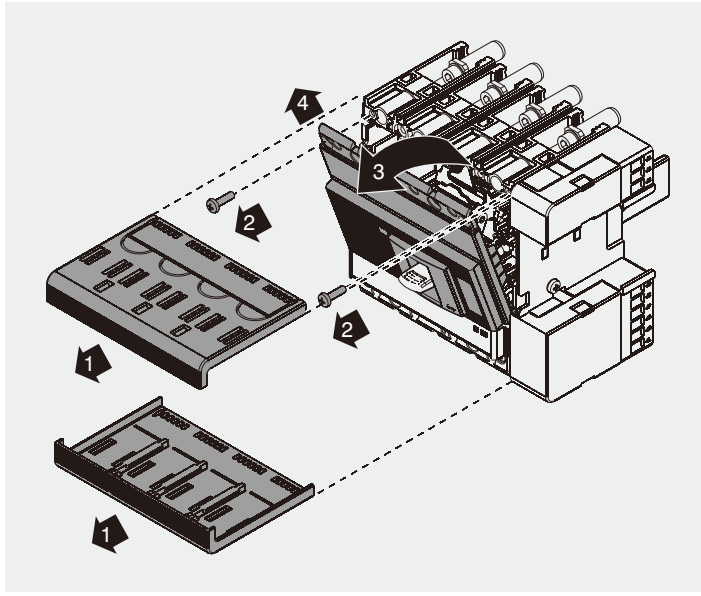
29

Example: XT4 F - XT5 F (MIR-V) (for pushrod I)



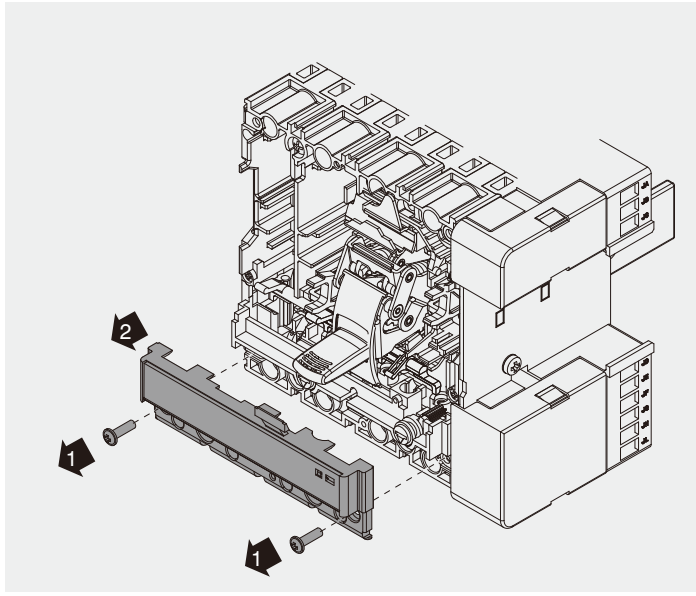
30

XT4 W (for pushrod I)



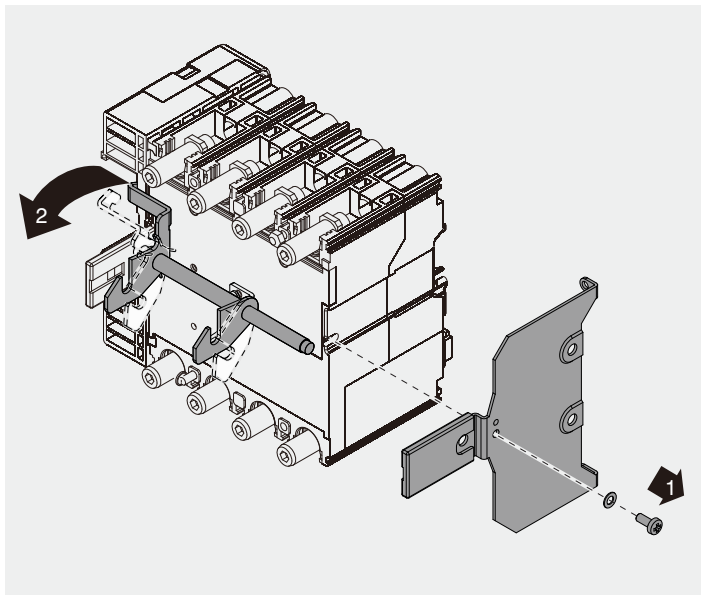
31

XT4 W (for pushrod I)



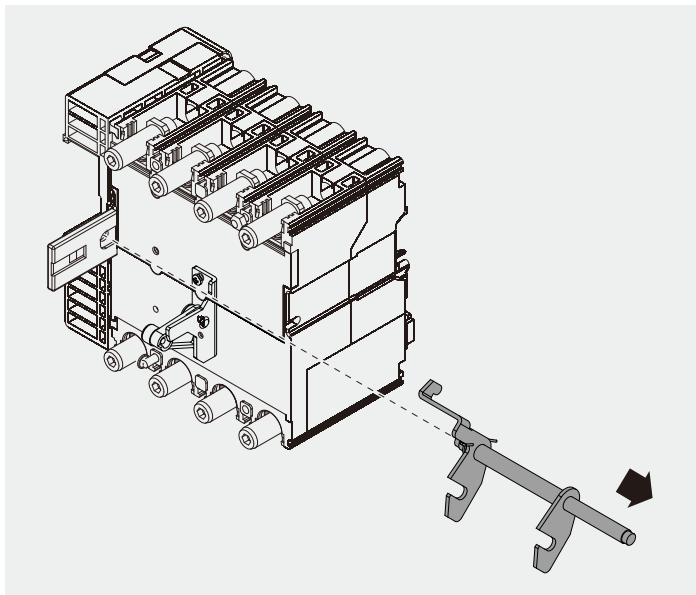
32

XT4 W (for pushrod I)



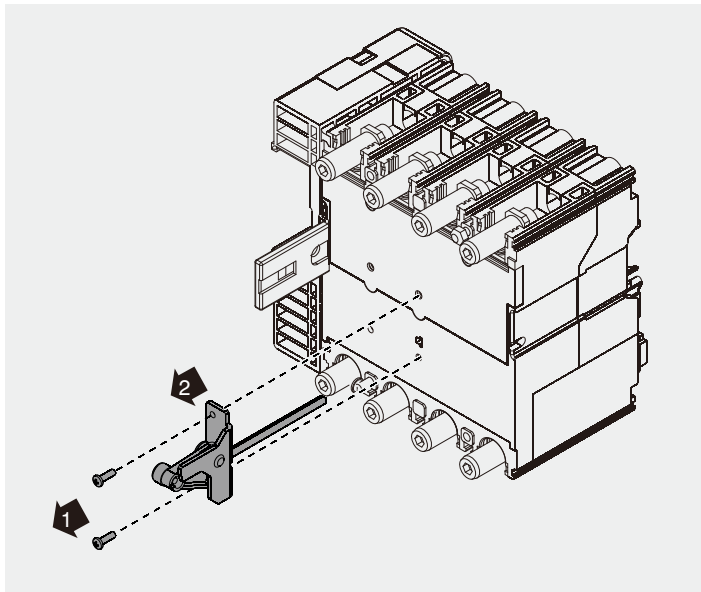
33

XT4 W (for pushrod I)



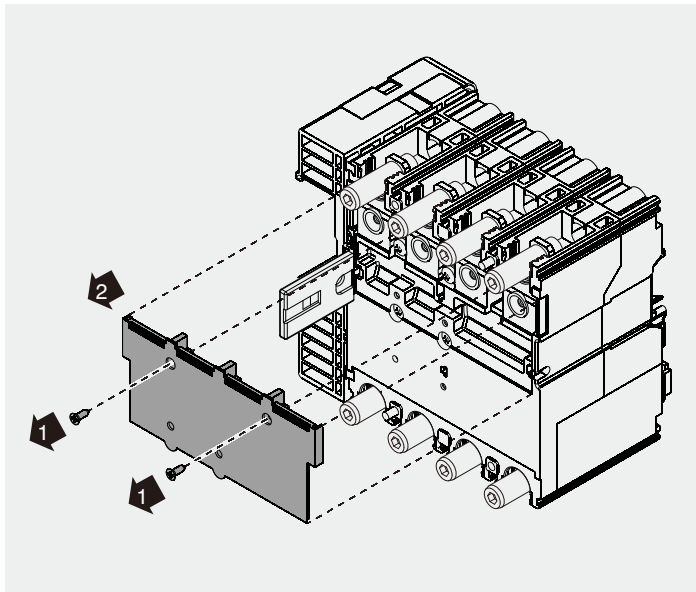
34

XT4 W (for pushrod I)



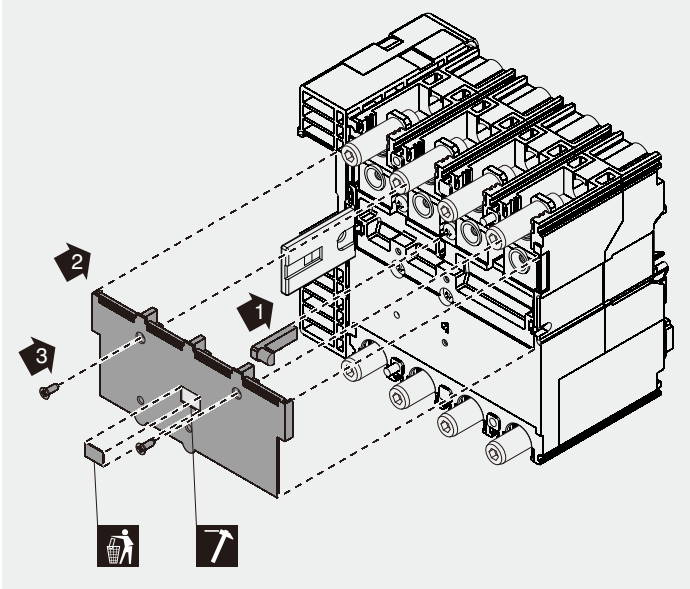
35

XT4 W (for pushrod I)



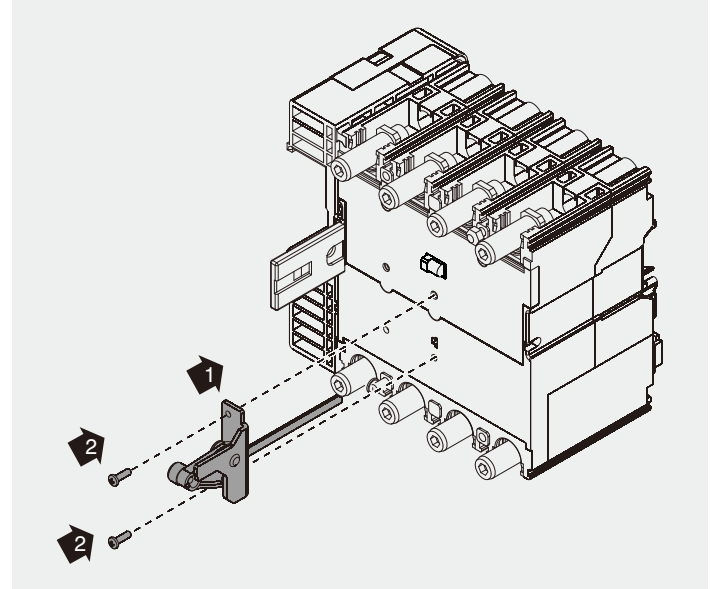
36

XT4 W (for pushrod I)



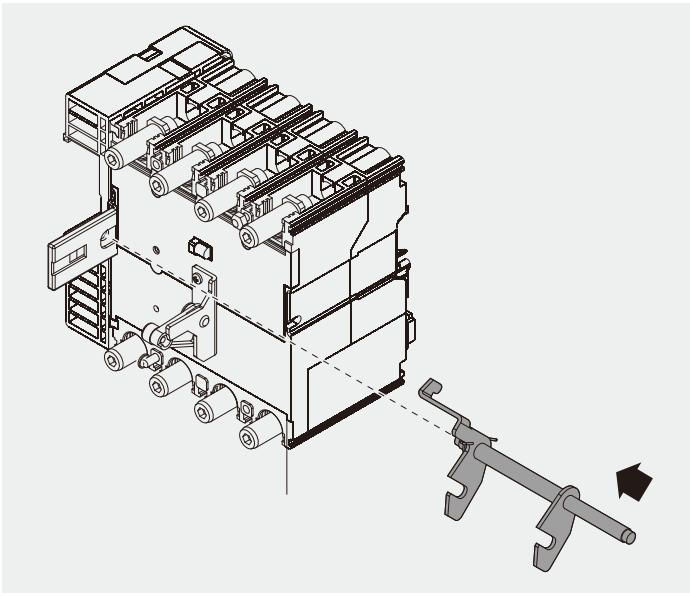
37

XT4 W (for pushrod I)



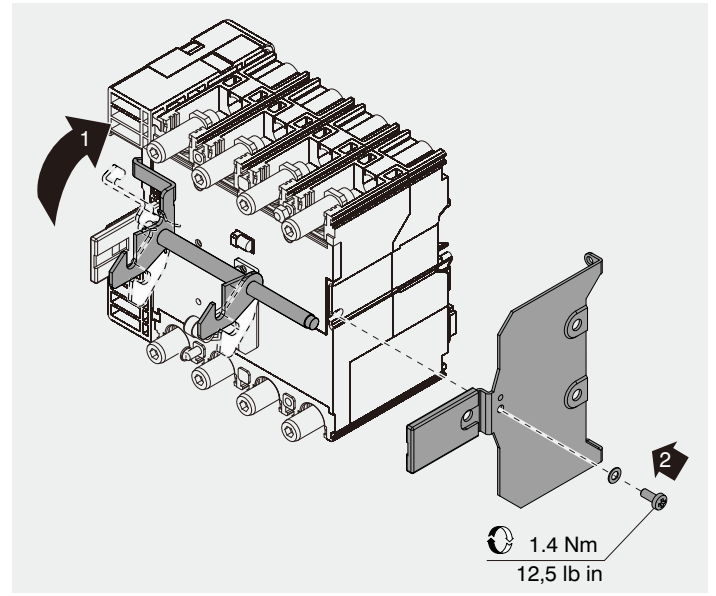
38

XT4 W (for pushrod I)



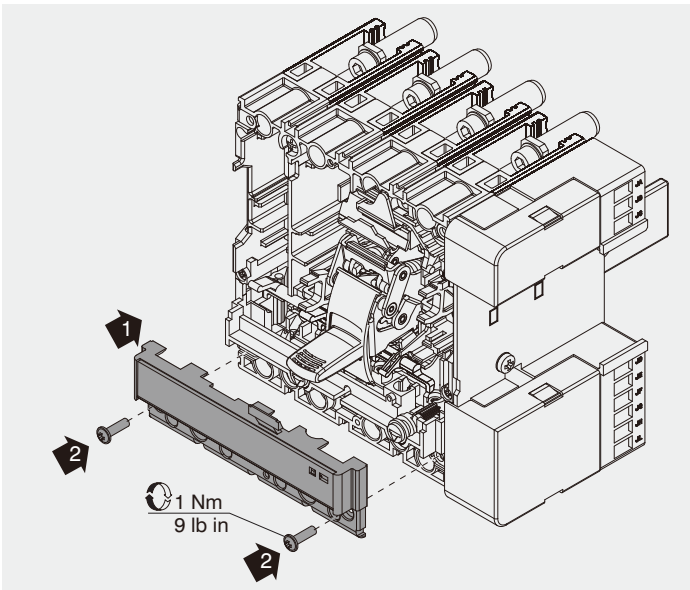
39

XT4 W (for pushrod I)



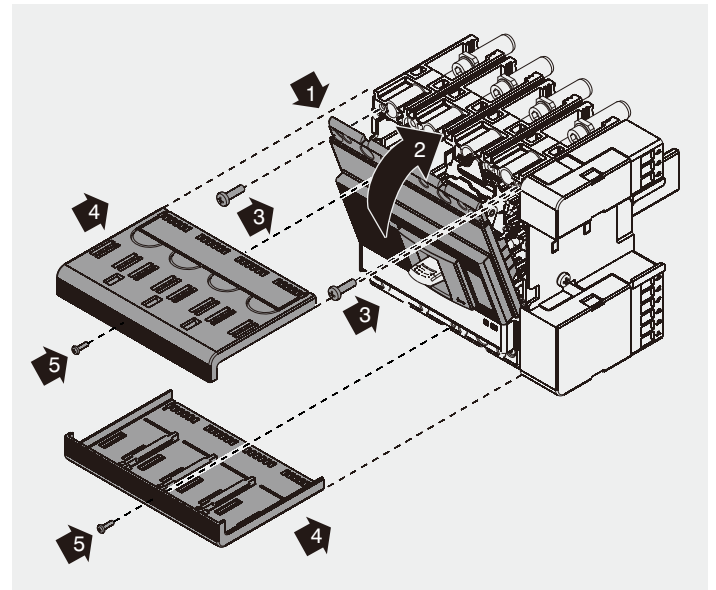
40

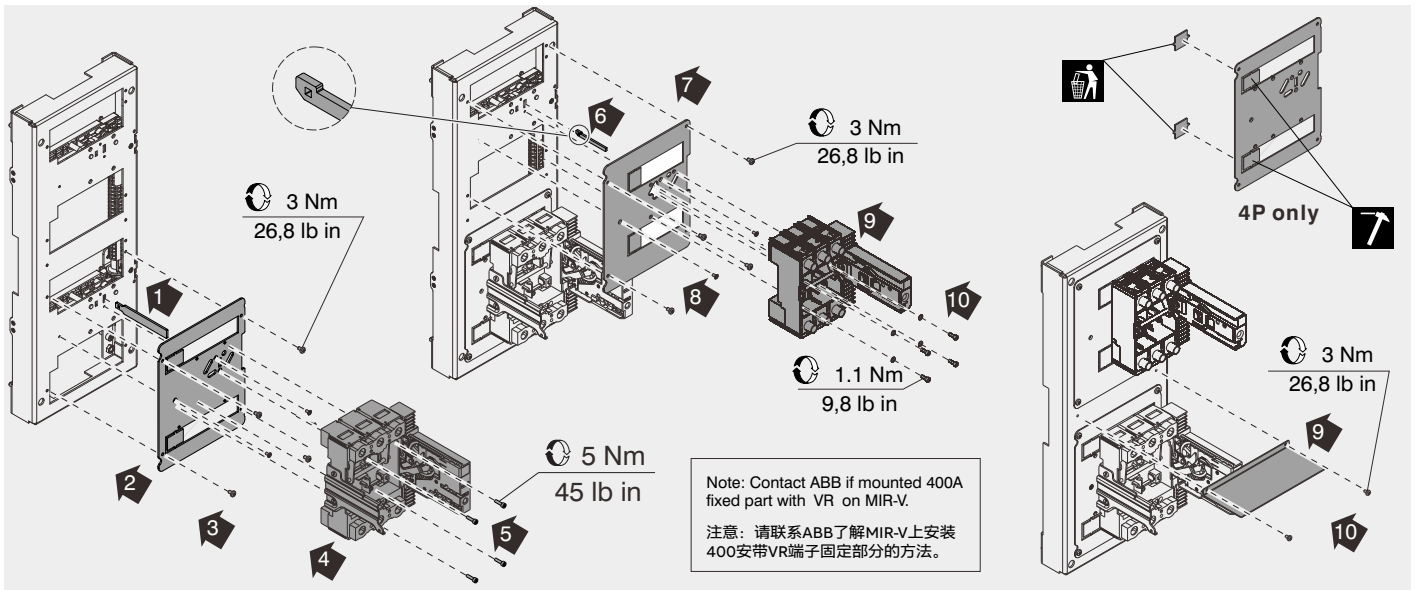
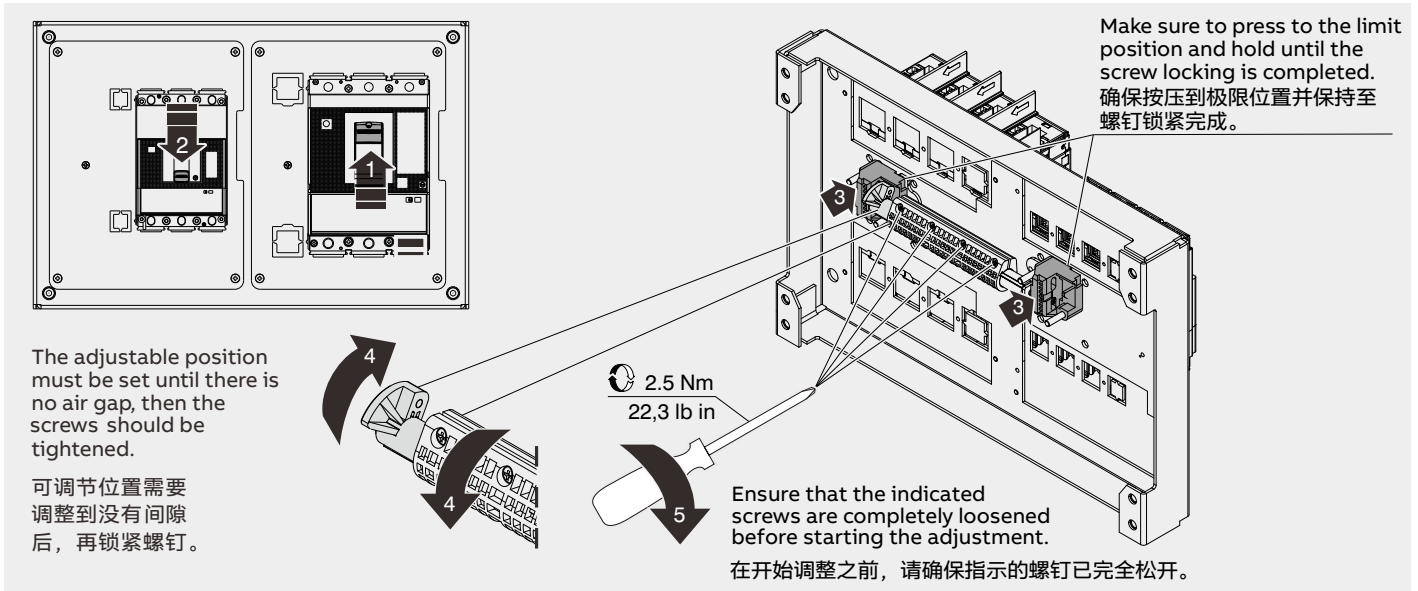
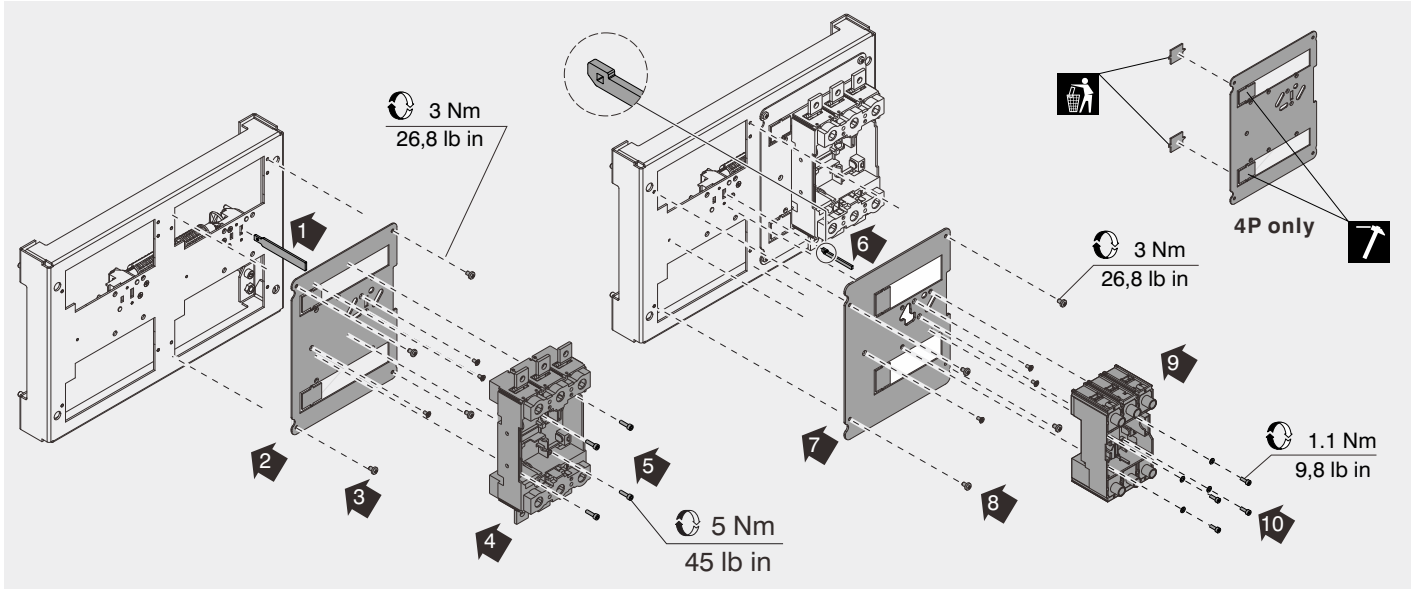
XT4 W (for pushrod I)

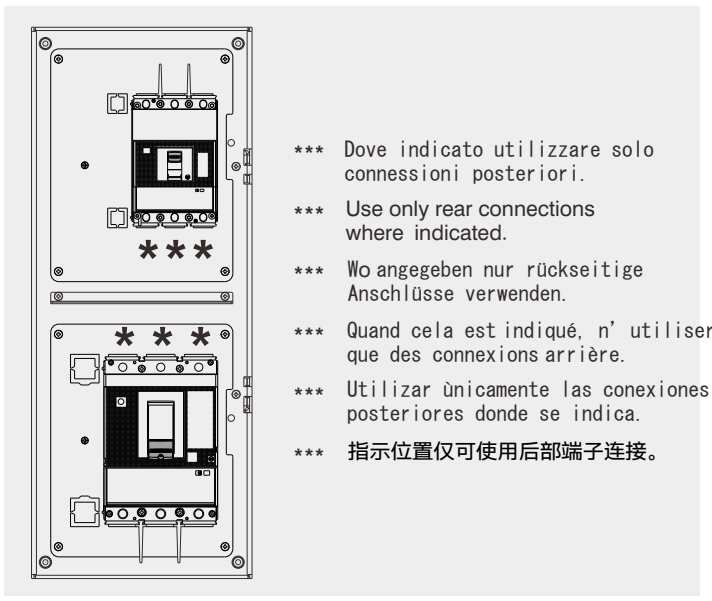
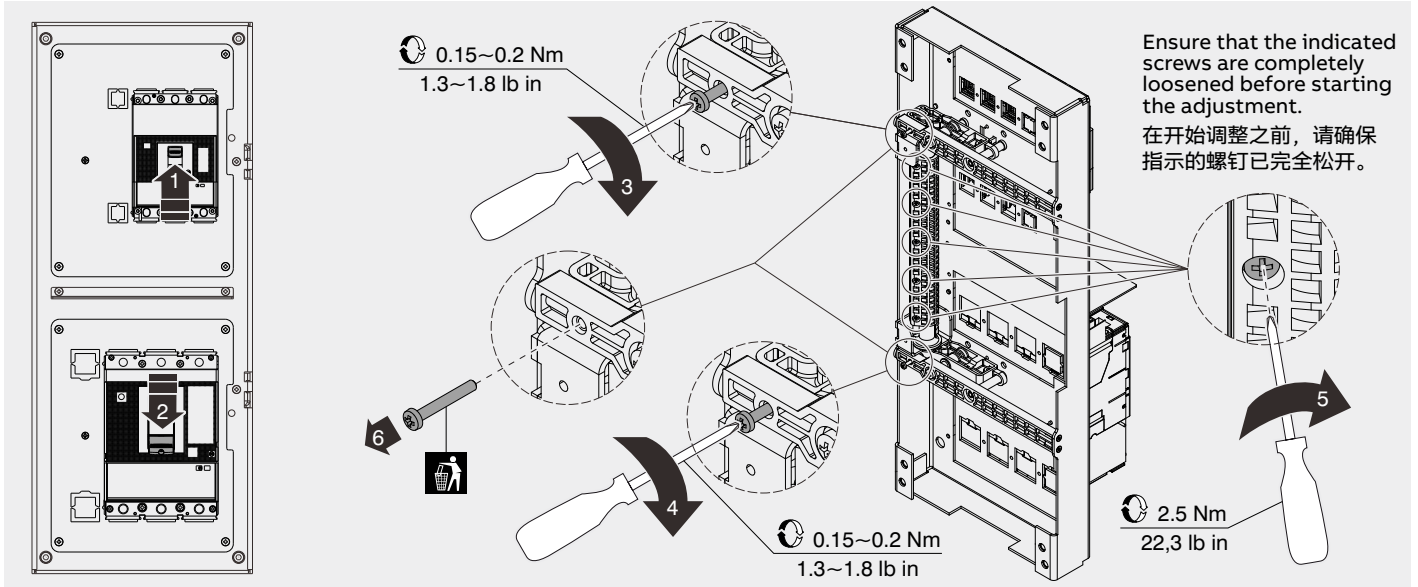


41

XT4 W (for pushrod I)







Set the breakers to ensure MIR is installed correctly.

- 1, Close breaker A, breaker B can not be closed;
 - 2, Close breaker B, breaker A can not be closed.
- Note: If a MOE is installed, the first circuit breaker closes, and the second circuit breaker attempts to close through the MOE. If it does not close, the second circuit breaker must be opened and cannot remain in the closed position.

Posizionare gli interruttori per assicurarsi che il MIR sia correttamente installato.

- 1, Chiudere l'interruttore A, l'interruttore B non può essere chiuso;
 - 2, Chiudere l'interruttore B, l'interruttore A non può essere chiuso;
- Nota: Se viene installato un MOE, il primo interruttore automatico si chiude, e il secondo interruttore automatico tenta di chiudersi tramite il MOE. Se non si chiude, il secondo interruttore deve essere aperto e non può rimanere in posizione chiusa.

Stellen Sie die Leistungsschalter so ein, dass MIR korrekt installiert ist.

- 1, Den Leistungsschalter A einschalten, den Leistungsschalter B kann nicht geschlossen;
 - 2, Den Leistungsschalter B einschalten, den Leistungsschalter A kann nicht geschlossen;
- Notis: Wenn ein MOE installiert ist, schließt der erste Leistungsschalter, und der zweite Leistungsschalter versucht, über das MOE zu schließen. Wenn er sich nicht schließt, muss der zweite Leistungsschalter geöffnet werden und darf nicht in der geschlossenen Position verbleiben.

Posicionar los interruptores para asegurarse de que el MIR esté instalado correctamente.

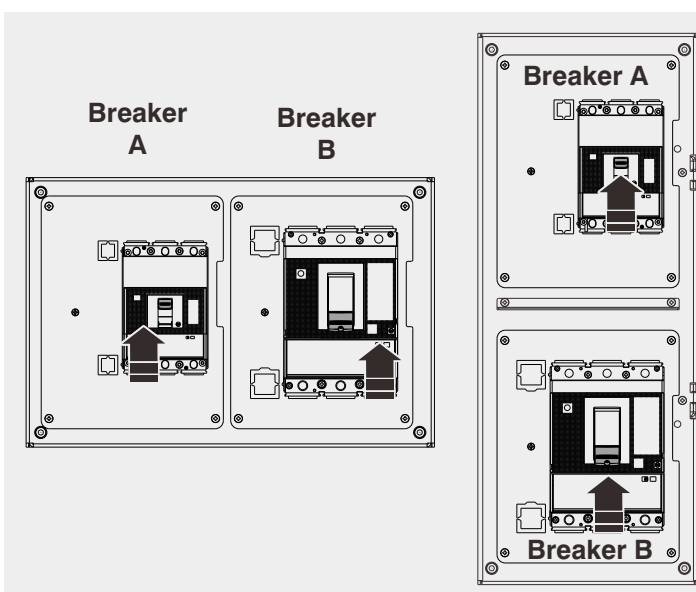
- 1, Cerrar el interruptor A, el interruptor B no se puede cerrar;
 - 2, Cerrar el interruptor B, el interruptor A no se puede cerrar;
- Nota: Si un MOE está instalado, el primer disyuntor se cierra, y el segundo disyuntor intenta de cerrarse a través del MOE. Si no se cierra, el segundo disyuntor debe ser abierto y no puede permanecer en posición cerrada.

Placer les disjoncteurs pour vous assurer que le MIR est correctement installé

- 1, Fermer le disjoncteur A, le disjoncteur B ne peut pas être fermé;
 - 2, Fermer le disjoncteur B, le disjoncteur A ne peut pas être fermé;
- Nota: Si se instala un MOE, el primer interruptor automático se cierra y el segundo interruptor automático intenta cerrarse a través del MOE. Si no se cierra, el segundo interruptor debe abrirse y no puede permanecer en la posición cerrada.

按下下述步骤操作断路器, 以确保MIR被正确安装。

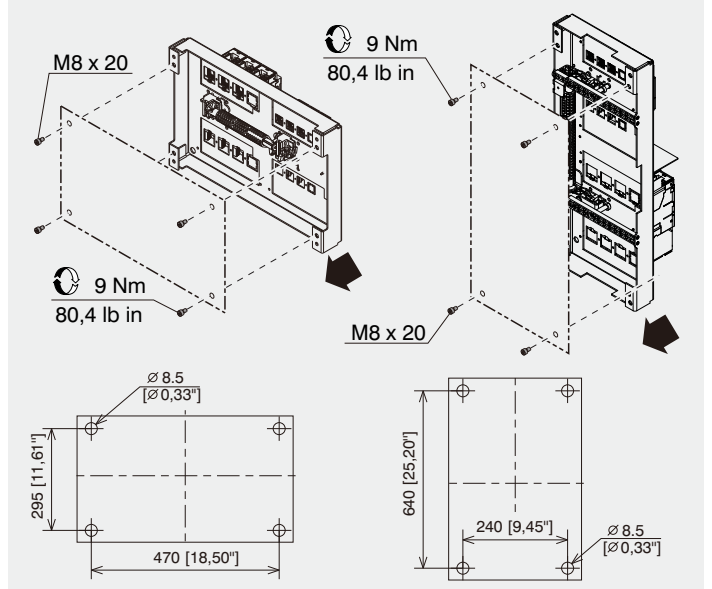
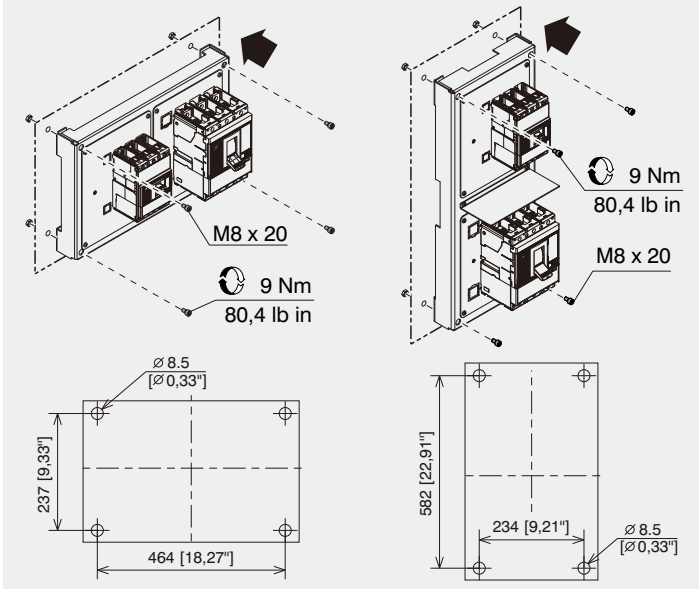
- 1, 闭合断路器A后, 断路器B不能被闭合;
 - 2, 闭合断路器B后, 断路器A不能被闭合。
- 备注: 如果加装MOE, 第一台断路器合闸, 第二台断路器通过MOE尝试合闸。合不上后, 第二台断路器需要分闸, 不能保持在合闸位置。



48

Front Mounted 49

Rear Mounted



50

