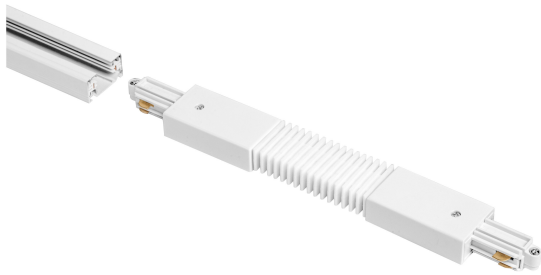


PRODUCT DATASHEET

TRACKLIGHT FLEXIBLE CONNECTOR WHITE

Tracklight accessories | Tracklight accessories



Areas of application

- Kitchens, living rooms, children's rooms or home offices
- Entrance areas

Product benefits

- Timeless elegant design
- High-quality materials

Product features

- Customisable modular tracklight system
- Accessories for tracklight system

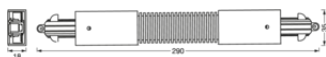
TECHNICAL DATA

Electrical data

Nominal voltage	220...240 V
Mains frequency	50/60 Hz
Protection class	I

Dimensions & Weight

Length	290 mm
Width	35 mm
Height	18,0 mm
Product weight	110.00 g



Materials & Colors

Product color	White
Body material	Aluminum/Plastic

Application & Mounting

Ambient temperature range	-20...+40 °C
Type of protection	IP20

Certificates & Standards

Ball shot safe	No
----------------	----

DOWNLOAD DATA

DOWNLOAD DATA



User instruction

LOGISTICAL DATA

Product code	Packaging unit (Pieces/Unit)	Dimensions (length x width x height)	Gross weight	Volume
4058075764088	BAG 1	20 mm x 120 mm x 340 mm	116.00 g	0.82 dm ³

Product code	Packaging unit (Pieces/Unit)	Dimensions (length x width x height)	Gross weight	Volume
4058075764095	Shipping box 25	370 mm x 195 mm x 205 mm	3241.00 g	14.79 dm ³

The mentioned product code describes the smallest quantity unit which can be ordered. One shipping unit can contain one or more single products. When placing an order, for the quantity please enter single or multiples of a shipping unit.

DISCLAIMER

Subject to change without notice. Errors and omission excepted. Always make sure to use the most recent release.