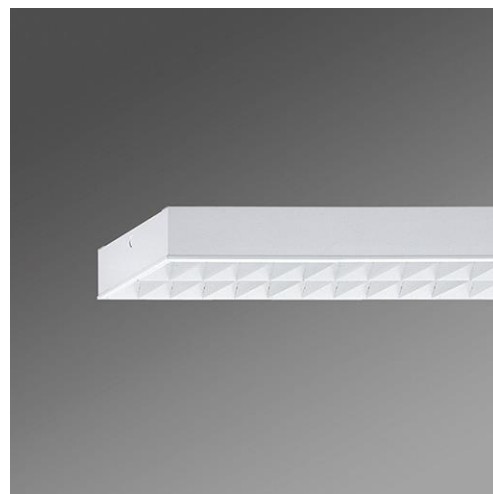


Datasheet

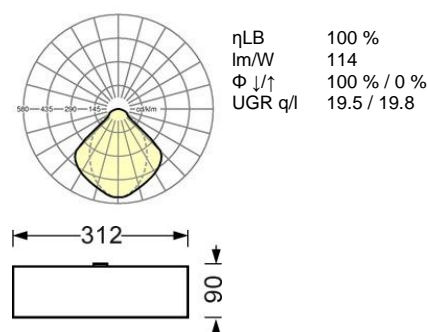
REGIOLUX

Category (ETIM):	Sports hall luminaire
Type:	THLA LED
Order number:	68120026600
Configuration:	Lamps integrated: LED, Light colour 840/neutral white (4000K), Colour rendering Ra=80; LED service life 50000h L80/B10
Operating device:	Electronic driver DALI (2 pcs.)
Mains voltage:	230V / 50Hz
System performance (W):	86
Luminaire luminous flux (lm):	9700
lm/W:	114
Energy efficiency class:	A+
Certifications:	IP 20, protection class I, F, Tennis ball impact resistance, Protection against flying balls, Indoor, CE
Colour of the housing:	traffic white RAL 9016
Weight (net) (kg):	15.22
Dimensions LxWxH/DxH (mm):	1548 x 312 x 90
Cable entry KE X/Y (mm):	0 / 0
mounting method:	Surface single mounting, Surface light run mounting, Suspended single mounting, Suspended / light run mounting
EAN-number:	4020863281435
Commodity code:	94051098

THLA/1500-2 LED 9700lm 840 • vw • DALI • 68120026600

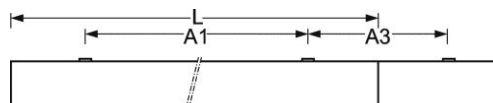


Lighting technology
 Louvre, white-direct wide distribution
 THLA/1500-2 LED 9700 lm 840



Sports hall luminaire; Sheet steel housing Housing colour traffic white RAL 9016; Direct wide-beam light distribution using sheet steel metal louvre with robust smooth cross blades; painted white similar to RAL 9016; with V reflector, can be folded down on one side; ball-proof. Louvre fastening using ball-proof spring catches that can only be opened with tools; fitted with 1x Regiolux LED unit, neutral white light colour (840) with very good colour consistency and high colour rendering Ra>80; Electrical connection via 5-pole connection terminal with plug-in contacts. LED units can be individually dimmed or as a group. The accessories for suspended mounting installation must be ordered separately.

Dimensions LxWxH/DxH (mm): 1548 x 312 x 90
 Cable entry KE X/Y (mm): 0 / 0
 Configuration: Lamps integrated: LED, Light colour 840/neutral white (4000K), Colour rendering Ra=80; LED service life 50000h L80/B10
 Luminaire luminous flux (lm): 9700
 lm/W: 114
 Operating device: Electronic driver DALI (2 pcs.)
 System performance (W): 86
 Energy efficiency class: A+
 Certifications: IP 20, protection class I, F, Tennis ball impact resistance, Protection against flying balls, Indoor, CE



Regiolux GmbH
 Type: THLA/1500-2 LED 9700 840 DALI vw
 Article number: 68120026600
 Product deep link: <http://www.regiolux.de/en/article/68120026600>
 5 year guarantee after registration on website.