

AARDINGS- EN EQUIPOT. LITZE, VERTIND KOPER, 50 MM², 300 MM, GAT 16,5 MM

CATALOG NUMBER

MBJ50-300-16



MBJ Grounding and Bonding Braids are a reliable and convenient grounding solution for applications that require flexibility and durability. The tinned copper ground braids with massivated palms come ready to install without any additional cutting, stripping, crimping or punching and do not require the addition of tin or crimped lugs. The proprietary manufacturing process optimizes the electrical contact between each wire and helps eliminate moisture issues in the palms, preventing corrosion and lengthening the useful life of the braid.

CERTIFICATIONS



FEATURES

Complete range of earth/ground flexible connections from 6 - 100 mm² (11.84 - 197.35 kcmil) cross section and from 100 - 500 mm (3.937" - 19.685") length

Integral palm, without tin or crimped lugs for superior electrical contact and tensile strength resistance

Resistant to vibration and fatigue, reducing maintenance

Provides weight savings, material savings and lower impedance when compared to similar lugged cables with insulation

Ready to use out of the box, eliminates the need for cutting, stripping, crimping and punching

Quick and easy to install

Recommended by the EMC/EMI directives and less impedance than cables

EAC compliant

RoHS compliant

Compliant to ISO 6469-1 (Electrically propelled road vehicles - Part 1: Rechargeable energy storage system) - Section 6.2.2 Vibrations

PRODUCT ATTRIBUTES

Article Number: 563390

Material: Copper

Finish: Tinned

Working Temperature: 105 °C Max

Certification Details: UL® 467

Complies With: IEC® 60439.1; IEC® 61439.1

Ampacity: 250 A

Thickness: 2.50 mm

Cross Section: 50 mm²

Length: 300 mm

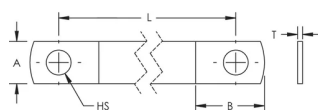
Hole Size: 16.50 mm

A: 28 mm

B: 33 mm

Unit Weight: 0.150 kg

DIAGRAMS



WARNING

nVent products shall be installed and used only as indicated in nVent's product instruction sheets and training materials. Instruction sheets are available at www.nvent.com and from your nVent customer service representative. Improper installation, misuse, misapplication or other failure to completely follow nVent's instructions and warnings may cause product malfunction, property damage, serious bodily injury and death and/or void your warranty.

North America

+1.800.753.9221

Option 1 – Customer Care

Option 2 – Technical Support

Europe

Netherlands:

+31 800-0200135

France:

+33 800 901 793

Europe

Germany:

800 1890272

Other Countries:

+31 13 5835404

APAC

Shanghai:

+ 86 21 2412 1618/19

Sydney:

+61 2 9751 8500



Our powerful portfolio of brands:
nVent.com CADDY ERICO HOFFMAN RAYCHEM SCHROFF
TRACER