

Socket outlet with pin earthing and shutters, flush-mounting depth 28.5 mm, base with plug-in terminals and finishing set white

101-66605

4 year warranty

Compound socket outlet (base and finishing set) with pin earthing. The base is equipped with plug-in terminals and claw fixing. The socket outlet also has a shutters and a flush-mounting depth of 28.5 mm. Finishing colour: white

Wires that remain fixed:

- wire is fixed firmly due to the high-quality plug-in terminal with a long life span, tested according to the norm
- since the conductor release on the mechanisms is located at the front, the wiring cannot push on the release when you place it in the flush-mounting box.

Faster and easier installation:

- all connections terminals are located at the top of the base:
 - to ensure all wires can be cut and stripped at the same length
 - to guarantee more space under the mechanism, so you can easily fold the wires and place the mechanism in the flush-mounting box without the wiring pushing it back up.

Niko quality:

- long life span since the plug-in terminal stays within the limits of the norm during a temperature and power drop
- metal base is held firmly in place, even on uneven walls, doesn't break and is not subject to stress cracking (small ruptures)
- firm metal claws with a large engagement depth (31 mm) remain fixed when mounted and can be screwed tightly to ensure that the socket outlets can remain fixed in the wall for a longer time and to avoid the mechanisms should become warped

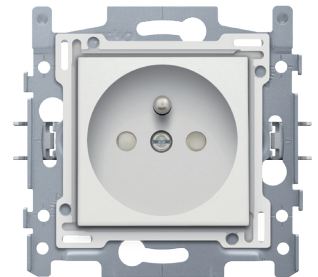
Technical data

Socket outlet with pin earthing and shutters, flush-mounting depth 28.5 mm, base with plug-in terminals and finishing set white.

- Protection degree: IP20
- Protection degree: IP41 for the combination of a mechanism, central plate and faceplate
- The combination of a mechanism, a central plate and a faceplate has an impact-resistance of IK06
- Certification marks: CEBEC
- Battery: NA
- Marking: CE

Base for socket outlet with pin earthing and shutters, flush-mounting depth 28.5 mm, 16 A/250 Vac, plug-in terminals.

- Protection degree: The combination of a mechanism, a central plate and a faceplate has a protection degree of IP21-D



niko

- Impact resistance: The combination of a mechanism, a central plate and a faceplate has an impact-resistance of IK06
- Material base
 - ureumformaldehyde (UF) with high heat resistance
 - white RAL9010 (approximately)
- Flush-mounting frame
 - 1 mm-thick metal
 - galvanized on all sides after cutting, even on the cut edges
 - with 4 grooves with screw hole of 7 mm
 - with 4 screw holes (indicated by a screw symbol) with a diameter of 3 mm for mounting on panels
- Required type of flush-mounting box
 - depth: min. 40 mm (cabling space included)
 - claw/screw fixing: 60 mm
 - inner diameter box: 60 mm
 - multiple boxes centre distance horizontal: 71 mm
 - multiple boxes centre distance vertical: 71 mm
 - multiple boxes centre distance vertical: 60 mm for Belgium and France
- Fixing method
 - simple mounting in a flush-mounting box with grip surfaces
 - with claws that rotate open using screws with a combination screwhead (Pz2 or slot 1 x 5.5 mm), for mounting in a flush-mounting box with grip surfaces
 - engagement depth of claws: 23.5 mm
 - claws turn back completely when loosened
- Centre-to-centre distance
 - Simple and quick assembly of one or more mechanisms by the indication (chalk line, laser, etc.) of the centre of the flush-mounting frame
 - vertical coupling centre-to-centre distance 60 mm by sliding several bases into each other; they lock themselves automatically
 - vertical coupling centre-to-centre distance 71 mm using pre-formed lips at the bottom, by folding the lips downwards over a length of 1 mm, the bases support each other and the centre-to-centre distance is guaranteed.
 - horizontal connection of multiple bases is quick and perfect thanks to the folded-up dovetails on the left and right sides
 - extra robustness due to the folded-up edges on the outside of the base and the continuation into the inside of the base
- End border: 4 rectangular openings (7 x 2.5 mm) which, if the flush-mounting box protrudes from the plasterwork, can compensate for a margin of between 1 and 1.2 mm, so that the faceplate can still butt up perfectly against the wall
- Wire connection
 - contact buses fitted with plug-in terminals for clamping the wires
- Wire capacity
 - all connection terminals at the top side of the base
 - up to 2 x 2.5 mm² wire per terminal
- Stripping length
 - 14 mm stripping length
 - indelibly indicated at the rear side: stripping length
- Ambient temperature: -5 – +40 °C
- Certification marks: CEBEC
- Marking: CE

Finishing set for socket outlet with pin earthing and shutters, flush-mounting depth 28.5 mm, white. This central plate is surrounded with a flat edge that is equipped at all 4 corners with a rectangular opening, each containing a multi-positional snap hook. The construction of the central plate ensures that the faceplate can always be attached flat to the wall, even in cases of untidy plasterwork. This works in two directions: If the flush-mounting box sticks out of the plasterwork, the multi-positional snap hooks can compensate for a 1 to 1.2 mm margin; if the flush-mounting box is sunk too deeply in the plasterwork, the snap hooks can compensate for up to a 1.8 mm margin. The flat edge around the central plate also has 4 round openings that ensure the correct positioning of the faceplate in relation to the central plate. After mounting all components (faceplate, finishing set and switch), no metal parts are visible thanks to the flat edge of the central plate.

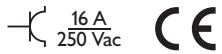
- Material central plate: The central plate is made of rigid PC and ASA. The base material is coloured in mass.
- Colour: white (coloured in mass, approximately NCS S 0502 - Y50R, RAL 9010)
- Dismantling: To dismount simply unscrew the central plate.
- Shutters: Equipped with shutters. This means that contact is made after simultaneous introduction of the pins of a plug but prevents contact from

being made if only 1 pin is introduced or if the two pins are not introduced simultaneously.

- Impact resistance: The combination of a mechanism, a central plate and a faceplate has an impact-resistance of IK06
- Fire safety
 - The plastic parts of the central plate are self-extinguishing (comply with a filament test of 650°C)
 - The plastic parts of the central plate are halogen-free.
- Dimensions of finishing with flat edge: 56 x 56 mm (HxW)

Dimensions of visible area of finishing: 45 x 45 mm (HxW)

- Dimensions (HxWxD): 55.8 x 55.8 x 25.6 mm
- Certification marks: CEBEC, NF
- Marking: CE



Wiring diagram

