

# Claws for switches

170-71005

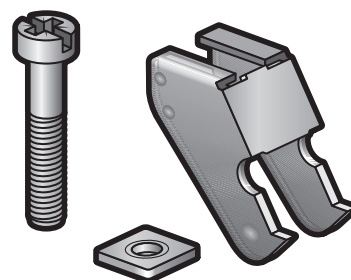
4 year  
warranty

Set of a claw, a screw and a nut to switch from screw fixing to claw fixing.

## Technical data

Claws for switches

- Protection degree: IP41 for the combination of a mechanism, central plate and faceplate
- Impact resistance: The combination of a mechanism, a central plate and a faceplate has an impact-resistance of IK06
- Marking: CE



CE