

Base for single speaker connection, claw fixing

170-79800

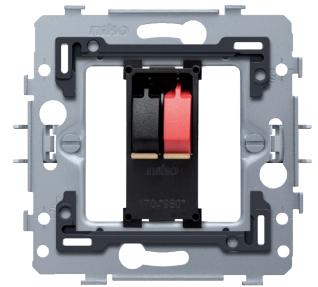
4 year warranty

Mechanism for the connection of a loudspeaker, with claw fixing. A finishing set in the colour of your choice must be ordered separately.

Technical data

Base for single speaker connection, claw fixing.

- Protection degree: IP41 for the combination of a mechanism, central plate and faceplate
- Impact resistance: The combination of a mechanism, a central plate and a faceplate has an impact-resistance of IK06
- Material base
dark grey pc + ASA
- Flush-mounting frame
 - 1 mm-thick metal
 - galvanized on all sides after cutting, even on the cut edges
 - with 4 grooves with screw hole of 7 mm
 - with 4 screw holes (indicated by a screw symbol) with a diameter of 3 mm for mounting on panels
- Fixing method
 - simple mounting in a flush-mounting box with grip surfaces
 - with claws that rotate open using screws with a combination screwhead (Pz1 or slot 1 x 5 mm), for mounting in a flush-mounting box with grip surfaces
 - engagement depth of claws: 31 mm
 - claws can be pushed back into their original position
 - claws can be easily pushed out using a screwdriver
- Centre-to-centre distance
 - horizontal coupling and vertical coupling with centre-to-centre distance 71 mm
 - horizontal connection of several bases is quick and perfect thanks to the folded-up dovetails on the left and right side
 - extra robustness due to the folded-up edges on the outside of the base and the continuation to the inside of the base
- End border: The flush-mounting frame is equipped, both on the top and the bottom, with a dark grey, plastic end border. This border is made of PC+ASA and is joined to the flush-mounting frame using a melting process. The corners of the two end borders are equipped with rectangular openings (7.9 x 1.5 mm) each containing a multi-positional snap hook. Thanks to the snap hooks, the 4 rectangular openings ensure that the faceplate can always be attached flat to the wall, even in cases of untidy plasterwork. This works in two directions: If the flush-mounting box sticks out of the plasterwork, the multi-positional snap hooks can compensate for a 1 to 1.2 mm margin; if the flush-mounting box is sunk too deeply in the plasterwork, the snap hooks can compensate for up to a 1.8 mm margin. The end borders also have 4 round openings that ensure



niko

the correct positioning of the faceplate in relation to the central plate.

- Wire connection
 - connection terminals with combination screwhead (Pz1-Slot 0.85 x 5 mm)
 - screwdriver slot prevents the screwdriver from sliding off the screwhead
- Wire capacity
 - the two connection terminals are located on the back and can each contain up to 6 mm² of wire
 - on the front of the base, the red connection terminal is on the right and the black connection terminal is on the left (up to 4 mm² of wire can be connected to these terminals).
- Ambient temperature: -5 – +40 °C
- Marking: CE

