

Finishing set for single switch or push button, piano black coated

200-61105

4 year warranty

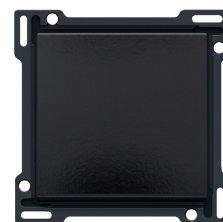
This finishing set is used in the installation of a single-pole, double-pole, two-way or intermediate switch or for a push button. It is suitable for a switch or push button used to control one light point.

Finishing colour: piano black coated.

Technical data

Finishing set for single switch or push button, piano black coated. This central plate is surrounded with a flat edge that is equipped at all 4 corners with a rectangular opening, each containing a multi-positional snap hook. The construction of the central plate ensures that the faceplate can always be attached flat to the wall, even in cases of untidy plasterwork. This works in two directions: If the flush-mounting box sticks out of the plasterwork, the multi-positional snap hooks can compensate for a 1 to 1.2 mm margin; if the flush-mounting box is sunk too deeply in the plasterwork, the snap hooks can compensate for up to a 1.8 mm margin. The flat edge around the central plate also has 4 round openings that ensure the correct positioning of the faceplate in relation to the central plate. After mounting all components (faceplate, finishing set and switch), no metal parts are visible thanks to the flat edge of the central plate.

- Function: The key and the intermediate plate (board) form one unit.
 - Number of control buttons: 1 control button
 - Material central plate: The central plate is enamelled and made of rigid PC and ASA.
 - Colour: Bakelite®-look piano black coated (approximately NCS S 9000 N, RAL 9005). Bakelite® is a registered trademark of Hexion GmbH
 - Dismantling: For dismantling the central plate, the flat edge is equipped with two notches indicated by a screwdriver symbol. The central plate can easily be dismantled using a slotted screwdriver.
 - Protection degree: IP41 for the combination of a mechanism, central plate and faceplate
 - Impact resistance: The combination of a mechanism, a central plate and a faceplate has an impact-resistance of IK06
 - Fire safety
 - The plastic parts of the central plate are self-extinguishing (comply with a filament test of 650°C)
 - The plastic parts of the central plate are halogen-free.
 - Dimensions of finishing with flat edge: 56 x 56 mm (HxW)
- Dimensions of visible area of finishing: 45 x 45 mm (HxW)
- Dimensions (HxWxD): 55.8 x 55.8 x 10.5 mm
 - Certification marks: CEBEC, SEMKO, VDE, DEMKO, NF, KEMA, ÖVE
 - Marking: CE



CE

www.niko.eu

niko

200-61105 - 17-04-2023