

Finishing set for mechanically controlled ventilation control, steel grey coated

220-61106

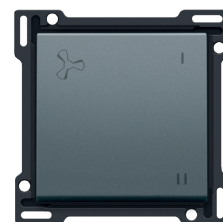
4 year warranty

Finishing set featuring 1 key with a ventilation icon symbol. This key is used for the control of mechanically controlled ventilation. Finishing colour: steel grey coated.

Technical data

Finishing set for mechanically controlled ventilation control, steel grey coated. This central plate is surrounded with a flat edge that is equipped at all 4 corners with a rectangular opening, each containing a multi-positional snap hook. The construction of the central plate ensures that the faceplate can always be attached flat to the wall, even in cases of untidy plasterwork. This works in two directions: If the flush-mounting box sticks out of the plasterwork, the multi-positional snap hooks can compensate for a 1 to 1.2 mm margin; if the flush-mounting box is sunk too deeply in the plasterwork, the snap hooks can compensate for up to a 1.8 mm margin. The flat edge around the central plate also has 4 round openings that ensure the correct positioning of the faceplate in relation to the central plate. After mounting all components (faceplate, finishing set and switch), no metal parts are visible thanks to the flat edge of the central plate.

- Number of control buttons: 1 control button
 - Material central plate: The central plate is enamelled and made of rigid PC and ASA.
 - Colour: alu-look steel grey (approximately NCS S 8005 - R80B, RAL 240 30 05)
 - Print: The key on the central plate is indelibly imprinted with the ventilation symbol.
 - Dismantling: For dismantling the central plate, the flat edge is equipped with two notches indicated by a screwdriver symbol. The central plate can easily be dismantled using a slotted screwdriver.
 - Protection degree: IP41 for the combination of a mechanism, central plate and faceplate
 - Impact resistance: The combination of a mechanism, a central plate and a faceplate has an impact-resistance of IK06
 - Fire safety
 - The plastic parts of the central plate are self-extinguishing (comply with a filament test of 650°C)
 - The plastic parts of the central plate are halogen-free.
 - Dimensions of finishing with flat edge: 56 x 56 mm (HxW)
- Dimensions of visible area of finishing: 45 x 45 mm (HxW)
- Dimensions (HxWxD): 55.8 x 55.8 x 10.5 mm
 - Marking: CE



CE

www.niko.eu

niko

220-61106 - 12-07-2023