

Splashproof double horizontal surface-mounting box with one M20 input with cable gland for two functions, grey

700-84851

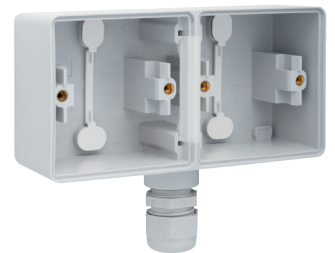
4 year warranty

This double vertical surface-mounting box with one M20 input with cable gland is suitable for two functions. The entire unit is splashproof which makes it extremely well-suited for use in damp areas and in demanding environments. Finishing colour: grey

Technical data

Splashproof double horizontal surface-mounting box with one M20 input with cable gland for two functions, grey.

- Number of mechanisms: 2
- Material surface-mounting box: The surface-mounting box is made of impact-resistant, dust-resistant, halogen-free and self-extinguishing polypropylene (UL94-V2/1.6 mm).
- Protection degree: See protection degree of the mounted function
- Impact resistance: The combination of a Hydro mechanism and a flush- or surface-mounting box has an impact resistance of IK07 with a minimum temperature of -25 °C and a maximum temperature of 55 °C
- Colour: The base material is coloured light grey in mass (approximately NCS S 1502 - B, RAL 7035)
- Marking: CE



CE