

CHANNEL

Smarter Safety

RAZOR



LED Emergency Exit Signage
from Channel Safety Systems



Razor™

LED Emergency Exit Sign

The ultra slim-line Razor LED emergency exit sign range offering hanging, recessed, flush mounted and wall/ceiling mounted versions.

Features

- Comprehensive family, comprising hanging, recessed, hanging recessed and wall/ceiling mounted versions
- Stylish ultra slim-line and compact range of LED exit signs complete with arrow up pictograms (other arrow options available)
- 3 hour maintained versions
- Long life LED technology
- Sleek unobtrusive design with aluminium LED sign extension and polycarbonate gear housing
- Viewing distances of 28m and 26m (recessed version only)
- Push to test function (excluding wall mounted version)
- Adjustable suspension heights available on hanging exit signs only
- The suspension wires in the Razor™ hanging version provide the SELV electrical supply to the LEDs so there is no need to have a visible power cable.
- Meets BS EN 60598-2-22 and other relevant standards



Viewing Distance: (meters)



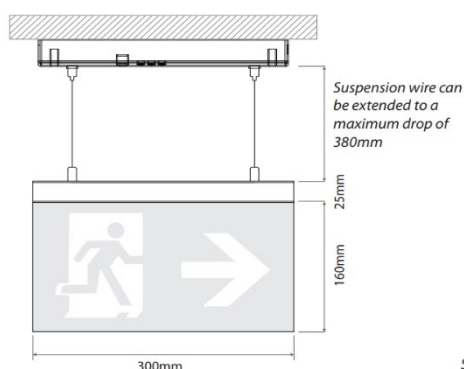
Recessed version 26m
All other versions 28m

Note: Image not to scale and for pictorial reference only

SPECIFICATION

Housing material	Polycarbonate / Aluminum
Standard colour	White RAL 9003 + Silver
Printing foil	Silk screen
Viewing distance	28m & 26m (recessed)
Illuminant	16x LED – White
Protection category	IP40
Supply voltage	230V 50Hz ± 10%
Battery	LiFe PO4 3.2V 1500mAh
Operating temperature	0 °C - 55°C (Non Condensing)
Weight	0.8Kg

Hanging Fitting



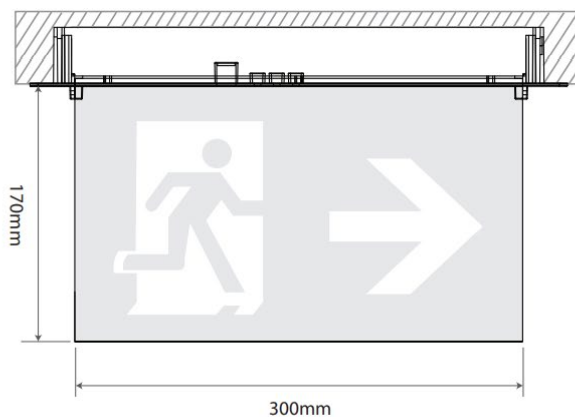
Surface dimensions Length 290mm Width 47mm
Depth 35mm

PRODUCT CODE DESCRIPTION

E/RZ/M3/LED/H/Li Razor 3 hour maintained LED exit sign hanging complete with arrow up - Blade size 300mm(L) x 170mm(H) x 9mm(D)

LED

Recessed Fitting



Cut out dimensions 310mm x 47mm
Flange 334mm x 75mm
Depth 40mm

PRODUCT CODE	DESCRIPTION
--------------	-------------

E/RZ/M3/LED/F/Li	Razor 3 hour maintained LED exit sign flush recessed mounted complete with arrow up - Blade size 300mm(L) x 170mm(H) x 9mm(D)
------------------	---

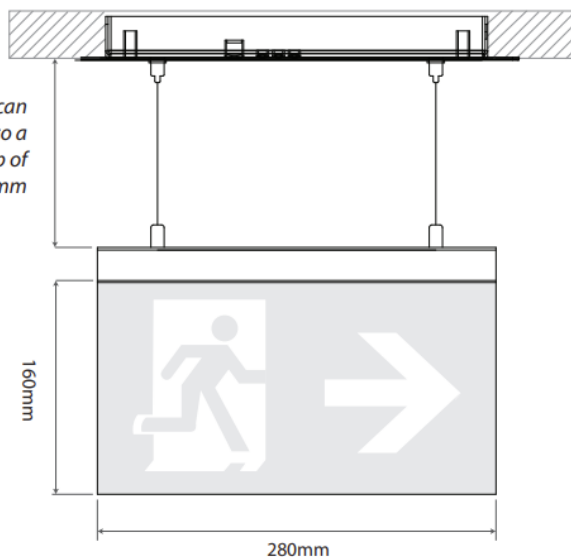
Please note: This fitting has a different blade size and if ordering additional pictograms use E/PIC/RZ/F/ALR, E/PIC/RZ/F/D and E/PIC/RZ/F/U

LED

Hanging Recessed Fitting



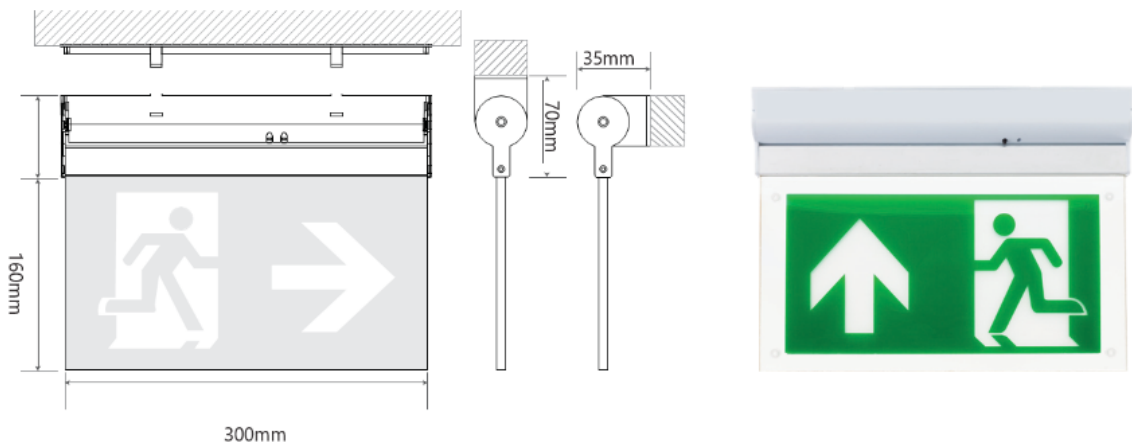
Suspension wire can
be extended to a
maximum drop of
380mm



Cut out dimensions 275mm x 47mm
Flange 290mm x 65mm
Depth 35mm

PRODUCT CODE	DESCRIPTION
--------------	-------------

E/RZ/M3/LED/R/Li	Razor 3 hour maintained LED exit sign hanging recessed complete with arrow up - Blade size 300mm(L) x 170mm(H) x 9mm(D)
------------------	---



Images above from left to right show; Wall/ceiling fitting (E/RZ/M3/LED/W), End views of ceiling and wall fitting options and product photograph

PRODUCT CODE	DESCRIPTION
E/RZ/M3/LED/W/Li	Razor 3 hour maintained and non-maintained LED exit sign wall/ceiling fitted complete with arrow up - Blade size 300mm(L) x 170mm(H) x 9mm(D)

RazorTM

Accessories (pack)



Are your emergency exit signs complying with the current legislation?

The Health and Safety Signs and Signals Regulations i, SI 341, introduced in 1996 to enact the EU Signs Directive ii, required that all text-only fire safety signs (i.e. EXIT or FIRE EXIT signs) produced to comply with BS 2560 should be replaced by 24th December 1998 with the pictogram format “running man” signs.

Consideration should not only be given to updating signs by changing the legend panels or diffusers, but also to taking the opportunity to test the installed signage products. Testing will often reveal that the internal battery also needs replacing. Replacement of just the legend panels or diffusers may be difficult if the sign luminaire type has been discontinued by the maker. This, combined with the possible need to replace the internal battery, will usually mean that it is more cost effective to replace the whole luminaire.

PRODUCT CODE	DESCRIPTION
E/RZ/M3/LED/W	Razor pictogram pack (includes Arrow Down and Arrow Left/Right) - note fitting comes with Arrow Up
B/BATT/RAZOR/W	Razor Battery
B/BATT/RAZOR/FH/R	Razor Battery Pack
B/BATT/RAZOR/Li	Razor Lithium Battery