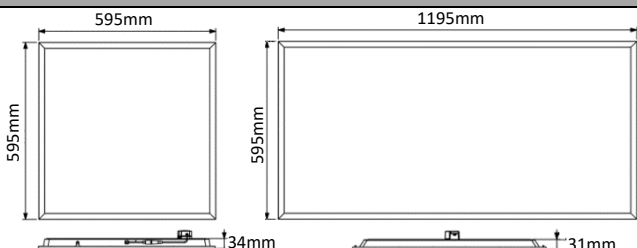


BR1111	600x600 LED Panel TP(b) 4000K
BR1112	600x600 LED Panel TP(b) 6000K
BR1121	1200x600 LED Panel TP(b) 4000K
BR1122	1200x600 LED Panel TP(b) 6000K

Backlit LED Panel Range

Features	Dimensions
<ul style="list-style-type: none"> High efficiency, flicker-free backlit LED panels Large loop-in loop-out screwless push terminals integrated into the LED driver, makes installation quicker UGR<21, low glare in compliance with BS EN12464-1 Plug in 3hr emergency pack available (BR1191) Surface mounting box for 600x600 (BR1193), 1200x600 (BR1195) and wire suspension pack (BR1194) available TP(b) rated diffuser 	

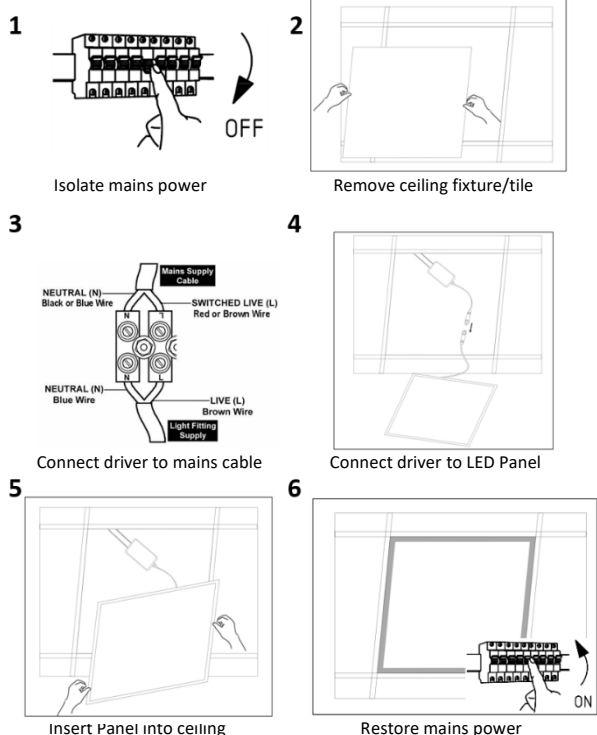
Safety Instructions

- These instructions should be read carefully and retained after installation for future reference and maintenance.
- Ensure that the mains power is switched off before carrying out installation or maintenance.
- It is recommended that luminaires are installed and fitted by a qualified electrician ensuring the installation complies with the current edition of IET wiring regulations - BS 7671.
- Ensure adequate free air ventilation is allowed around the light fitting. Do not cover with insulation.
- This product is intended for indoor use only.
- Ensure all electrical connections are secure and that there are no loose strands.

Environmental Instructions

This product may contain substances that can be hazardous to the environment if not disposed of properly. Electrical and electronic equipment should never be disposed of with general household waste but must be separated for its correct treatment and recovery. Where possible recycle your packaging.

Installation Instructions



SUGGESTED METHOD OF INSTALLATION

Read instructions and check you have all the tools and accessories to complete the installation safely and in compliance with current electrical standards.

STEP 1:

Switch off the electricity at the fuse box by removing the relevant fuse or switching off the circuit breaker before proceeding with the installation.

STEP 2:

Remove the existing ceiling light fixture/tile.

STEP 3:

Connect the driver to the electrical supply, ensuring correct polarity.

STEP 4:

Connect the LED driver to the LED panel using the plug and play connectors.

STEP 5:

Insert the LED panel into the ceiling aperture, in place of the previously removed fixture/tile.

STEP 6:

Once secured, restore the power supply, and check the light source.

Specification

Input Voltage:		220-240V 50Hz	CRI (Ra):		>80
Wattage:	600x600	32W	Total Lumens:	600x600	3500lm
	1200x600	45W		1200x600	5500lm
Electrical Classification:		Class II	Diffuser Fire Rating:		TP(b)
Life Hours (L70):		30,000 Hrs	IP Rating:		IP20