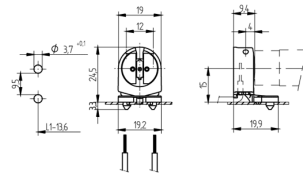


G5 (T5): Fluorescent Push In Lampholders

Article number: 26.662.2001-0

EAN: -



Product information "G5 (T5): Fluorescent Push In Lampholders"

Wiring above the mounting plate is also possible

Snap in pins for IP 40

A pair of lampholders provides a lamp length tolerance compensation of 2 mm

Ausführung: G5 Push-In Lampholders

Color: white

Lamp axis height: 15

Luminaire wall thickness: 0.6 - 1.0

Material: Housing: PCRotor: PBT

Note warranty conditions: *Warranty conditions of BJB GmbH & Co. KG as stated as available via the Internet under <https://www.bjb.com/en/legal-information/general-terms-and-conditions/> are valid.

Packaging quantity:	1000
Producttype:	G5 Push-In Lampholders
Series:	Linear Fluorescent Lampholders for dry rooms (IP20)
T-marking:	130
UL:	yes
Weight:	3 g
Wiring:	through the body
approbation:	cULus
cULus file no.:	E-92235
mounting method 1:	Push-in pins
old article number:	26.662.2001.50

Available Downloads

- > [US General Information](#)
- > [Allgemeine Informationen](#)

Available CAD Downloads

- > [2D-CAD_\(DXF\)00T-502-08](#)
- > [3D-CAD_\(STEP,_Parasolid,_IGES,_3D-PDF\)00T-502-06](#)

Certifications

Article Number	Documents
26.662.2001-0	Genehmigung_liegt_vor-Approval_at_hand2667527
26.662.2001-0	Genehmigung_liegt_vor-Approval_at_hand749651
26.662.2001-0	Genehmigung_liegt_vor-Approval_at_hand3677956
26.662.2001-0	Genehmigung_liegt_vor-Approval_at_hand1193791
26.662.2001-0	ENEC_Zeichen-ENEC_Approval713266
26.662.2001-0	cULus_gueltig_fuer_USA_und_Kanada-cULus_(USA_and_Kanada)727851
26.662.2001-0	PSE-Mark_(Japan)-PSE-Mark1206225



Tm 110

T 130



0,6 - 1,0



18 AWG0,5 -1,0 mm²