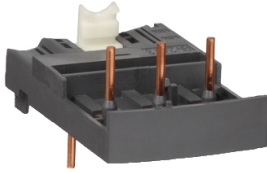


# Product datasheet

Specifications



## TeSys GV2 - Combination blocks - with contactor LC1D09...D38

Local distributor code:  
389530068

GV2AF3

EAN Code: 3389110569063

### Main

Range	Linergy
Product name	FT
Device short name	GV2AF
Product or component type	Combination block
Accessory / separate part category	Connection accessory
Range compatibility	TeSys GV2 TeSys Deca

### Complementary

Product compatibility	LC1D09...D38
Poles description	3P
[Ie] rated operational current	32 A
Net weight	0.016 kg

### Packing Units

Unit Type of Package 1	PCE
Number of Units in Package 1	1
Package 1 Height	9.500 cm
Package 1 Width	10.000 cm
Package 1 Length	5.000 cm
Package 1 Weight	22.000 g
Unit Type of Package 2	BB1
Number of Units in Package 2	10
Package 2 Height	9.500 cm
Package 2 Width	10.000 cm
Package 2 Length	15.200 cm
Package 2 Weight	269.000 g
Unit Type of Package 3	S03
Number of Units in Package 3	140
Package 3 Height	30.000 cm
Package 3 Width	30.000 cm
Package 3 Length	40.000 cm

---

Package 3 Weight 4.196 kg

## Logistical informations

---

Country of origin HU

## Contractual warranty

---

Warranty 18 months

## Environmental Data

Schneider Electric aims to achieve Net Zero status by 2050 through supply chain partnerships, lower impact materials, and circularity via our ongoing “Use Better, Use Longer, Use Again” campaign to extend product lifetimes and recyclability.

[Environmental Data explained >](#)

[How we assess product sustainability >](#)

### Environmental footprint

[Environmental Disclosure](#)

[Product Environmental Profile](#)

## Use Better

### Materials and Substances

Packaging made with recycled cardboard

Yes

Packaging without single use plastic

Yes

[EU RoHS Directive](#)

Compliant

REACH Regulation

[REACH Declaration](#)

## Use Again

### Repack and remanufacture


End of life manual availability

[End of Life Information](#)

Take-back

No

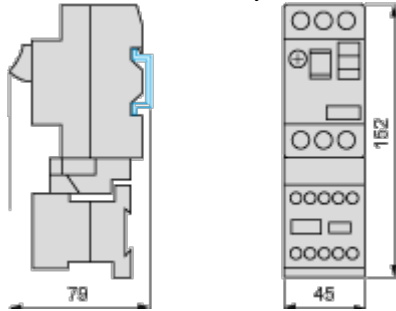
WEEE Label

 The product must be disposed on European Union markets following specific waste collection and never end up in rubbish bins

Dimensions Drawings

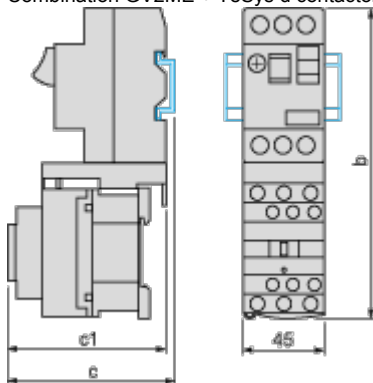
**GV2AF01**

Combination GV2ME + TeSys k contactor



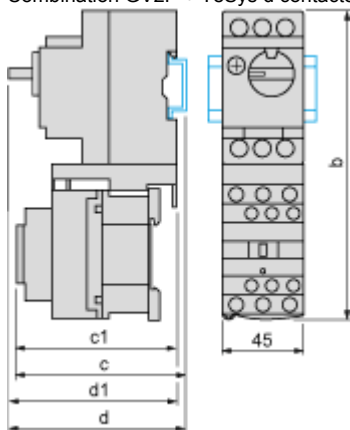
**GV2AF3**

Combination GV2ME + TeSys d contactor



GV2ME +	LC1D09...D18	LC1D25 and D32
b	176.4	186.8
c1	94.1	100.4
c	99.6	105.9

Combination GV2P + TeSys d contactor



GV2P +	LC1D09...D18	LC1D25 and D32
b	176.4	186.8
c1	100.1	106.4

GV2P +	LC1D09...D18	LC1D25 and D32
c	105.6	111.9
d1	95	95
d	100.5	100.5

Technical Illustration

Assembly's dimensions

---

