

Product datasheet

Specifications



15 Touch Smart Display XGA

Local distributor code:

402743172

HMIDT732

EAN Code: 3606480687228

Main

| | |
|---------------------------|---------------------------|
| Range of product | Harmony GTU |
| Product or component type | Flat screen |
| Terminal type | Touchscreen display |
| [Us] rated supply voltage | 12...24 V DC power supply |
| Supply voltage limits | 10.8...28.8 V |
| Power consumption in W | 22 W |
| Inrush current | 30 A |

Complementary

| | |
|----------------------------|---------------------------------------|
| Integrated connection type | USB 2.0 type A USB 2.0 type mini B |
| Touchscreen resolution | 1024 x 1024 |
| Pixel resolution | 1024 x 768 |
| Display size | 15 inch |
| Aspect ratio | 4:3 |
| Display type | Colour TFT LCD |
| Display resolution | 1024 x 768 pixels XGA |
| Display colour | 16 million colours |
| Backlight lifespan | 50000 hours |
| Touch panel | Multi touch analogue resistive |
| Function available | Brightness sensor |
| Type of cooling | Natural convection |
| Type of installation | Indoor installation |
| Cut-out dimensions | 383.5 (+ 1/- 0) x 282.5 (+ 1/- 0) mm |
| Width | 397 mm |
| Height | 296 mm |
| Depth | 67 mm |
| Net weight | 4.5 kg |

Environment

| | |
|-------------------------|--|
| IP degree of protection | Front panel: IP66 Front panel: IP67 |
|-------------------------|--|

| | |
|--|---|
| NEMA degree of protection | NEMA 4X front panel |
| Standards | UL 508 ANSI/ISA 12-12-01 Class I division 2 CSA C22.2 No 213 CSA C22.2 No 142 IEC 61132-2 |
| Product certifications | CULus RCM KC CE UKCA UKEX |
| Ambient air temperature for operation | 0...60 °C conforming to IEC 61131-2 |
| Ambient air temperature for storage | -20...60 °C |
| Relative humidity | 10...90 % non-condensing |
| Operating altitude | 2000 m |
| Vibration resistance | 3.5 mm constant amplitude (f = 5...9 Hz) conforming to IEC 61131-2 9.8 m/s ² (f = 9...150 Hz) conforming to IEC 61131-2 |
| Shock resistance | 147 m/s ² conforming to IEC 61131-2 |
| Electromagnetic compatibility | Electrostatic discharge immunity test level 3 conforming to IEC 61000-4-2 |

Packing Units

| | |
|-------------------------------------|------------|
| Unit Type of Package 1 | PCE |
| Number of Units in Package 1 | 1 |
| Package 1 Height | 15.000 cm |
| Package 1 Width | 38.000 cm |
| Package 1 Length | 52.600 cm |
| Package 1 Weight | 6.206 kg |
| Unit Type of Package 2 | P12 |
| Number of Units in Package 2 | 16 |
| Package 2 Height | 106.000 cm |
| Package 2 Width | 80.000 cm |
| Package 2 Length | 120.000 cm |
| Package 2 Weight | 119.500 kg |

Logistical informations

| | |
|--------------------------|----|
| Country of origin | ID |
|--------------------------|----|

Contractual warranty

| | |
|-----------------|-----------|
| Warranty | 18 months |
|-----------------|-----------|



Environmental Data

Schneider Electric aims to achieve Net Zero status by 2050 through supply chain partnerships, lower impact materials, and circularity via our ongoing “Use Better, Use Longer, Use Again” campaign to extend product lifetimes and recyclability.

[Environmental Data explained >](#)

[How we assess product sustainability >](#)

Environmental footprint

Total lifecycle Carbon footprint 1166

Environmental Disclosure [Product Environmental Profile](#)

Use Better

Materials and Substances

F-gas free Only air and vacuum used for insulation / breaking, no F-gas including SF6

Packaging made with recycled cardboard Yes

Packaging without single use plastic No

[EU RoHS Directive](#) Pro-active compliance (Product out of EU RoHS legal scope)

SCIP Number F7bde1f0-e6bc-4b91-91d2-88584de513eb

REACH Regulation [REACH Declaration](#)

Halogen-free status Product contains halogen above thresholds

PVC free No

Silicone-free No

Use Again

Repack and remanufacture

Recyclability potential, in % 55

End of life manual availability [End of Life Information](#)

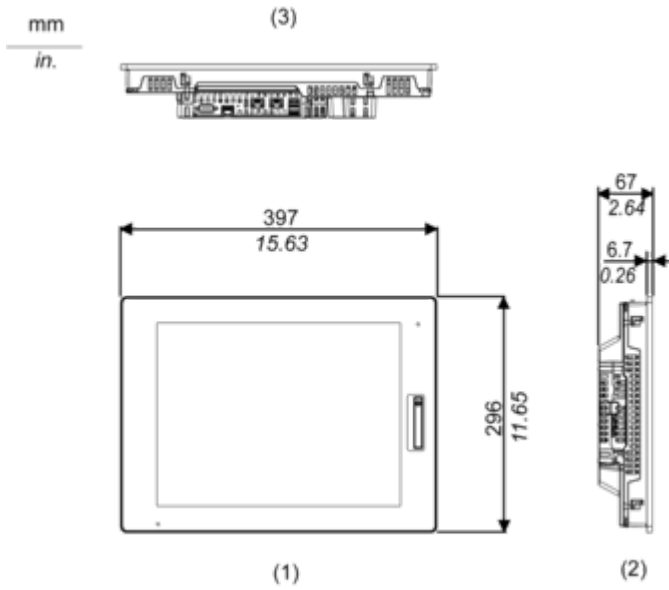
Take-back No

WEEE Label  The product must be disposed on European Union markets following specific waste collection and never end up in rubbish bins

Dimensions Drawings

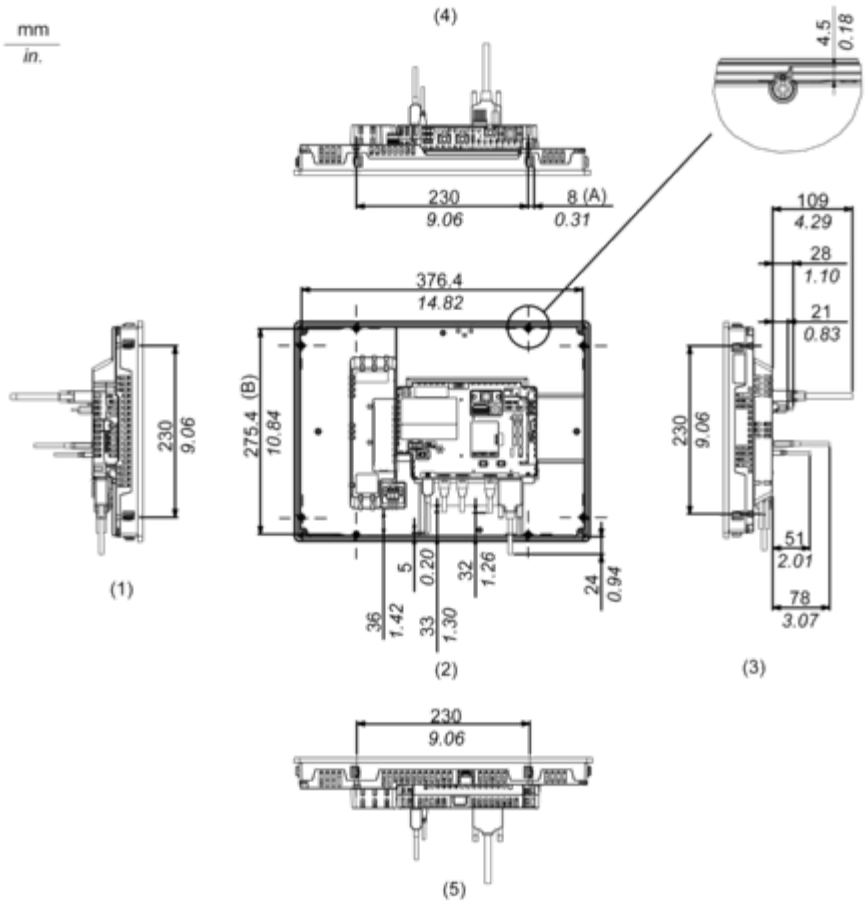
External Dimensions

Display Unit with Box Module



- 1 Front
- 2 Left
- 3 Bottom

Installation with Installation Fasteners and Dimensions with Cables



(A) Rotation area of the fastener

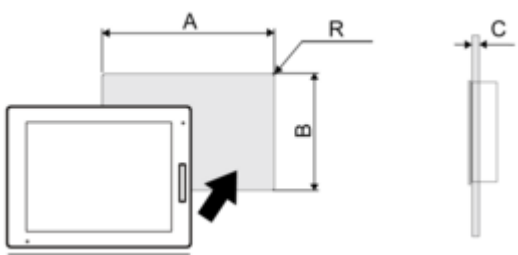
(B) Pitch of the center of installation fastner screws

- 1 Right
- 2 Front
- 3 Left
- 4 Bottom
- 5 Top

Mounting and Clearance

Mounting

Panel Cut Dimensions



Dimensions in mm

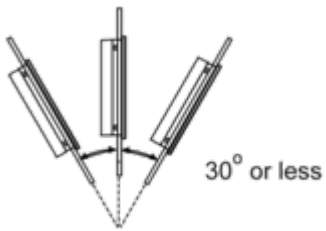
| A | B | C | R |
|---------------|---------------|---------|--------|
| 383.5 (+1/-0) | 282.5 (+1/-0) | 1.6...5 | 3 max. |

Dimensions in in.

| A | B | C | R |
|------------------|------------------|------------|-----------|
| 15.10 (+0.04/-0) | 11.12 (+0.04/-0) | 0.06...0.2 | 0.12 max. |

Installation Requirements

Mounting Angle



When installing this product in a slanted position with an incline more than 30°, the ambient temperature must not exceed 40 °C (104 °F). You may need to use forced air cooling (fan, A/C) to ensure the ambient operating temperature is 40 °C or less (104 °F or less).

Clearance

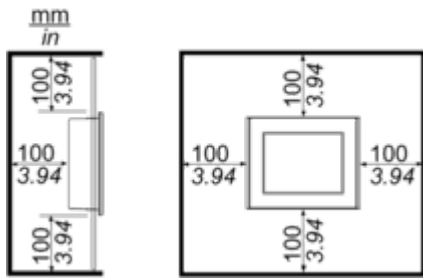


Image of product / Alternate images

Alternative

