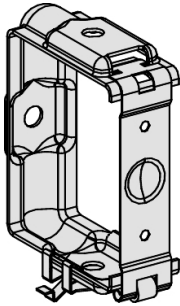


Product datasheet

Specifications



FIXING BRACKET FOR KBL LUMINAIRE ONTO KBB

KBB40ZFL

EAN Code: 3606485039626

Main

Range of product	Canalis
Product or component type	Bracket
Product compatibility	KBB KBA
Fixing device mounting	To suspend the IP 20 luminaire on KBA/KBB
Maximum load	45 kg
Quantity per set	Set of 12

Complementary

Accessory / separate part category	Fixing accessory
Width	55 mm
Depth	30 mm
Height	74 mm
Net weight	55 g

Environment

Standards	IEC 60439-2 IEC 61439-6
-----------	----------------------------

Packing Units

Unit Type of Package 1	PCE
Number of Units in Package 1	1
Package 1 Height	3.000 cm
Package 1 Width	5.500 cm
Package 1 Length	7.200 cm
Package 1 Weight	54.000 g
Unit Type of Package 2	BB1
Number of Units in Package 2	12
Package 2 Height	6.500 cm
Package 2 Width	16.000 cm
Package 2 Length	16.500 cm
Package 2 Weight	698.000 g
Unit Type of Package 3	P06

Number of Units in Package 3	1080
Package 3 Height	77.000 cm
Package 3 Width	60.000 cm
Package 3 Length	80.000 cm
Package 3 Weight	62.820 kg

Logistical informations

Country of origin	FR
--------------------------	----

Contractual warranty

Warranty	18 months
-----------------	-----------



Environmental Data

Schneider Electric aims to achieve Net Zero status by 2050 through supply chain partnerships, lower impact materials, and circularity via our ongoing “Use Better, Use Longer, Use Again” campaign to extend product lifetimes and recyclability.

[Environmental Data explained >](#)

[How we assess product sustainability >](#)

Environmental footprint

[Environmental Disclosure](#)

[Product Environmental Profile](#)

Use Better

Materials and Substances

Packaging made with recycled cardboard

Yes

Packaging without single use plastic

Yes

[EU RoHS Directive](#)

Compliant with Exemptions

REACH Regulation

[REACH Declaration](#)

Halogen-free status

Halogen free product

PVC free

Yes

Silicone-free

Yes

Use Again

Repack and remanufacture

End of life manual availability

No need of specific recycling operations

Take-back

No

WEEE Label

 The product must be disposed on European Union markets following specific waste collection and never end up in rubbish bins

Dimension Drawings

