

# Product datasheet

Specifications



## TeSys D contactor - 3P(3 NO) - AC-3 - $\leq 440$ V 18 A - 24 V DC coil

Local distributor code:

381803052

LC1D18BD

EAN Code: 3389110354775

## Main

Range of product	TeSys Deca
Product or component type	Contactor
Device short name	LC1D
Contactor application	Motor control Resistive load
Utilisation category	AC-4 AC-1 AC-3 AC-3e
Poles description	3P
[Ue] rated operational voltage	Power circuit: $\leq 690$ V AC 25...400 Hz Power circuit: $\leq 300$ V DC
[Ie] rated operational current	18 A (at $\leq 60$ °C) at $\leq 440$ V AC AC-3 for power circuit 32 A (at $\leq 60$ °C) at $\leq 440$ V AC AC-1 for power circuit 18 A (at $\leq 60$ °C) at $\leq 440$ V AC AC-3e for power circuit
[Uc] control circuit voltage	24 V DC

## Complementary

Motor power kW	4 kW at 220...230 V AC 50/60 Hz (AC-3) 7.5 kW at 380...400 V AC 50/60 Hz (AC-3) 9 kW at 415...440 V AC 50/60 Hz (AC-3) 10 kW at 500 V AC 50/60 Hz (AC-3) 10 kW at 660...690 V AC 50/60 Hz (AC-3) 4 kW at 400 V AC 50/60 Hz (AC-4) 4 kW at 220...230 V AC 50/60 Hz (AC-3e) 7.5 kW at 380...400 V AC 50/60 Hz (AC-3e) 9 kW at 415...440 V AC 50/60 Hz (AC-3e) 10 kW at 500 V AC 50/60 Hz (AC-3e) 10 kW at 660...690 V AC 50/60 Hz (AC-3e)
Motor power hp	1 hp at 115 V AC 50/60 Hz for 1 phase motors 3 hp at 230/240 V AC 50/60 Hz for 1 phase motors 5 hp at 200/208 V AC 50/60 Hz for 3 phases motors 5 hp at 230/240 V AC 50/60 Hz for 3 phases motors 10 hp at 460/480 V AC 50/60 Hz for 3 phases motors 15 hp at 575/600 V AC 50/60 Hz for 3 phases motors
Compatibility code	LC1D
Pole contact composition	3 NO
Protective cover	With
[Ith] conventional free air thermal current	10 A (at 60 °C) for signalling circuit 32 A (at 60 °C) for power circuit
Irms rated making capacity	140 A AC for signalling circuit conforming to IEC 60947-5-1 250 A DC for signalling circuit conforming to IEC 60947-5-1 300 A at 440 V for power circuit conforming to IEC 60947
Rated breaking capacity	300 A at 440 V for power circuit conforming to IEC 60947

<b>[Icw] rated short-time withstand current</b>	145 A 40 °C - 10 s for power circuit 240 A 40 °C - 1 s for power circuit 40 A 40 °C - 10 min for power circuit 84 A 40 °C - 1 min for power circuit 100 A - 1 s for signalling circuit 120 A - 500 ms for signalling circuit 140 A - 100 ms for signalling circuit
<b>Associated fuse rating</b>	10 A gG for signalling circuit conforming to IEC 60947-5-1 50 A gG at <= 690 V coordination type 1 for power circuit 35 A gG at <= 690 V coordination type 2 for power circuit
<b>Average impedance</b>	2.5 mOhm - Ith 32 A 50 Hz for power circuit
<b>Power dissipation per pole</b>	2.5 W AC-1 0.8 W AC-3 0.8 W AC-3e
<b>[Ui] rated insulation voltage</b>	Power circuit: 690 V conforming to IEC 60947-4-1 Power circuit: 600 V CSA certified Power circuit: 600 V UL certified Signalling circuit: 690 V conforming to IEC 60947-1 Signalling circuit: 600 V CSA certified Signalling circuit: 600 V UL certified
<b>Overvoltage category</b>	III
<b>Pollution degree</b>	3
<b>[Uimp] rated impulse withstand voltage</b>	6 kV conforming to IEC 60947
<b>Safety reliability level</b>	B10d = 1369863 cycles contactor with nominal load conforming to EN/ISO 13849-1 B10d = 20000000 cycles contactor with mechanical load conforming to EN/ISO 13849-1
<b>Mechanical durability</b>	30 Mcycles
<b>Electrical durability</b>	1.65 Mcycles 18 A AC-3 at Ue <= 440 V 1 Mcycles 32 A AC-1 at Ue <= 440 V 1.65 Mcycles 18 A AC-3e at Ue <= 440 V
<b>Control circuit type</b>	DC standard
<b>Coil technology</b>	With integral suppression device
<b>Control circuit voltage limits</b>	0.1...0.25 Uc (-40...70 °C):drop-out DC 0.7...1.25 Uc (-40...60 °C):operational DC 1...1.25 Uc (60...70 °C):operational DC
<b>Inrush power in W</b>	5.4 W (at 20 °C)
<b>Hold-in power consumption in W</b>	5.4 W at 20 °C
<b>Operating time</b>	63 ±15 % ms closing 20 ±20 % ms opening
<b>Time constant</b>	28 ms
<b>Maximum operating rate</b>	3600 cyc/h at 60 °C

<b>Connections - terminals</b>	Control circuit: screw clamp terminals 1 1...4 mm <sup>2</sup> - cable stiffness: flexible without cable end
	Control circuit: screw clamp terminals 2 1...4 mm <sup>2</sup> - cable stiffness: flexible without cable end
	Control circuit: screw clamp terminals 1 1...4 mm <sup>2</sup> - cable stiffness: flexible with cable end
	Control circuit: screw clamp terminals 2 1...2.5 mm <sup>2</sup> - cable stiffness: flexible with cable end
	Control circuit: screw clamp terminals 1 1...4 mm <sup>2</sup> - cable stiffness: solid without cable end
	Control circuit: screw clamp terminals 2 1...4 mm <sup>2</sup> - cable stiffness: solid without cable end
	Power circuit: screw clamp terminals 1 1.5...6 mm <sup>2</sup> - cable stiffness: flexible without cable end
	Power circuit: screw clamp terminals 2 1.5...6 mm <sup>2</sup> - cable stiffness: flexible without cable end
	Power circuit: screw clamp terminals 1 1...6 mm <sup>2</sup> - cable stiffness: flexible with cable end
	Power circuit: screw clamp terminals 2 1...4 mm <sup>2</sup> - cable stiffness: flexible with cable end
	Power circuit: screw clamp terminals 1 1.5...6 mm <sup>2</sup> - cable stiffness: solid without cable end
	Power circuit: screw clamp terminals 2 1.5...6 mm <sup>2</sup> - cable stiffness: solid without cable end

<b>Tightening torque</b>	Power circuit: 1.7 N.m - on screw clamp terminals - with screwdriver flat Ø 6 mm Power circuit: 1.7 N.m - on screw clamp terminals - with screwdriver Philips No 2 Control circuit: 1.7 N.m - on screw clamp terminals - with screwdriver flat Ø 6 mm Control circuit: 1.7 N.m - on screw clamp terminals - with screwdriver Philips No 2 Control circuit: 1.7 N.m - on screw clamp terminals - with screwdriver pozidriv No 2 Power circuit: 1.7 N.m - on screw clamp terminals - with screwdriver pozidriv No 2
--------------------------	--

<b>Auxiliary contact composition</b>	1 NO + 1 NC
--------------------------------------	-------------

<b>Auxiliary contacts type</b>	type mechanically linked 1 NO + 1 NC conforming to IEC 60947-5-1 type mirror contact 1 NC conforming to IEC 60947-4-1
--------------------------------	--

<b>Signalling circuit frequency</b>	25...400 Hz
-------------------------------------	-------------

<b>Minimum switching voltage</b>	17 V for signalling circuit
----------------------------------	-----------------------------

<b>Minimum switching current</b>	5 mA for signalling circuit
----------------------------------	-----------------------------

<b>Insulation resistance</b>	> 10 MOhm for signalling circuit
------------------------------	----------------------------------

<b>Non-overlap time</b>	1.5 ms on de-energisation between NC and NO contact 1.5 ms on energisation between NC and NO contact
-------------------------	---

<b>Mounting support</b>	Plate Rail
-------------------------	---------------

## Environment

<b>Standards</b>	CSA C22.2 No 14 EN 60947-4-1 EN 60947-5-1 IEC 60947-4-1 IEC 60947-5-1 UL 60947-4-1 IEC 60335-1:Clause 30.2 IEC 60335-2-40:Annex JJ UL 60335-2-40:Annex JJ CSA C22.2 No 60947-4-1
------------------	---

<b>Product certifications</b>	UL CCC CSA Marine UKCA EAC CB Scheme
-------------------------------	--

<b>IP degree of protection</b>	IP20 front face conforming to IEC 60529
--------------------------------	---

<b>Protective treatment</b>	TH conforming to IEC 60068-2-30
-----------------------------	---------------------------------

<b>Climatic withstand</b>	conforming to IACS E10 exposure to damp heat conforming to IEC 60947-1 Annex Q category D exposure to damp heat
---------------------------	--

<b>Permissible ambient air temperature around the device</b>	-40...60 °C 60...70 °C with derating
<b>Operating altitude</b>	0...3000 m
<b>Fire resistance</b>	850 °C conforming to IEC 60695-2-1
<b>Flame retardance</b>	V1 conforming to UL 94
<b>Mechanical robustness</b>	Vibrations contactor open (2 Gn, 5...300 Hz) Vibrations contactor closed (4 Gn, 5...300 Hz) Shocks contactor open (10 Gn for 11 ms) Shocks contactor closed (15 Gn for 11 ms)
<b>Height</b>	77 mm
<b>Width</b>	45 mm
<b>Depth</b>	95 mm
<b>Net weight</b>	0.49 kg

## Packing Units

<b>Unit Type of Package 1</b>	PCE
<b>Number of Units in Package 1</b>	1
<b>Package 1 Height</b>	5.000 cm
<b>Package 1 Width</b>	9.000 cm
<b>Package 1 Length</b>	11.000 cm
<b>Package 1 Weight</b>	522.500 g
<b>Unit Type of Package 2</b>	S02
<b>Number of Units in Package 2</b>	15
<b>Package 2 Height</b>	15.000 cm
<b>Package 2 Width</b>	30.000 cm
<b>Package 2 Length</b>	40.000 cm
<b>Package 2 Weight</b>	8.108 kg
<b>Unit Type of Package 3</b>	P06
<b>Number of Units in Package 3</b>	240
<b>Package 3 Height</b>	75.000 cm
<b>Package 3 Width</b>	60.000 cm
<b>Package 3 Length</b>	80.000 cm
<b>Package 3 Weight</b>	137.080 kg

## Logistical informations

<b>Country of origin</b>	FR
--------------------------	----

## Contractual warranty

<b>Warranty</b>	18 months
-----------------	-----------



## Environmental Data

Schneider Electric aims to achieve Net Zero status by 2050 through supply chain partnerships, lower impact materials, and circularity via our ongoing “Use Better, Use Longer, Use Again” campaign to extend product lifetimes and recyclability.

[Environmental Data explained >](#)

[How we assess product sustainability >](#)

### Environmental footprint

Total lifecycle Carbon footprint 39

Environmental Disclosure [Product Environmental Profile](#)

## Use Better

### Materials and Substances

Packaging made with recycled cardboard Yes

Packaging without single use plastic Yes

[EU RoHS Directive](#) Compliant with Exemptions

SCIP Number 50ae7612-fd2e-41e4-a369-50d0dea6e592

REACH Regulation [REACH Declaration](#)

PVC free Yes

## Use Again

### Repack and remanufacture

Recyclability potential, in % 75

End of life manual availability [End of Life Information](#)

Take-back No

WEEE Label  The product must be disposed on European Union markets following specific waste collection and never end up in rubbish bins

Dimensions Drawings

Dimensions



(1) Minimum electrical clearance

LC1		D09...D18	D093...D123	D099...D129
<b>b</b>		77	99	80
<b>c</b>	without cover or add-on blocks	93	93	93
	with cover, without add-on blocks	95	95	95
<b>c1</b>	with LAD N or C (2 or 4 contacts)	126	126	126
<b>c2</b>	with LA6 DK10	138	138	138
<b>c3</b>	with LAD T, R, S	146	146	146
	with LAD T, R, S and sealing cover	150	150	150

Connections and Schema

Wiring

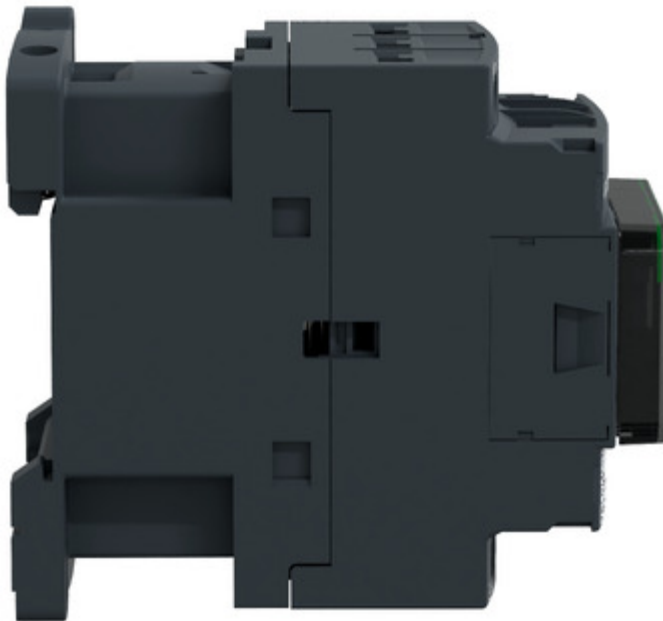
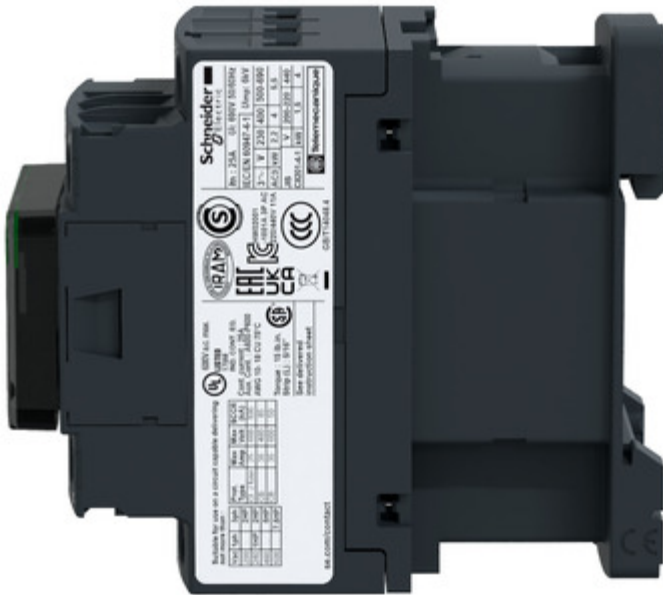
---

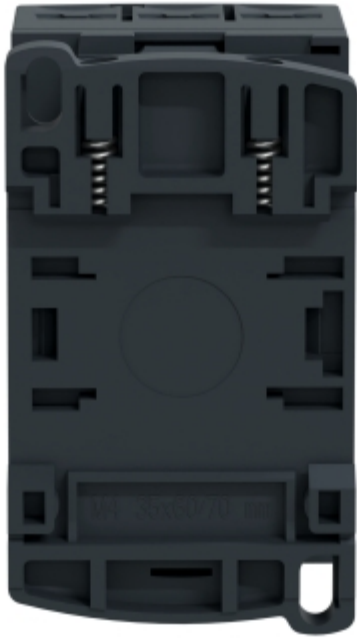


Image of product / Alternate images

**Alternative**

---





Technical Illustration

Assembly's dimensions

---

