

# Product datasheet

Specifications



## TeSys D contactor - 3P(3 NO) - AC-3 - $\leq 440$ V 32 A - 110 V AC coil

Local distributor code:

381816719

LC1D32F7

**EAN Code: 3389110350197**

## Main

Range of product	TeSys Deca
Product or component type	Contactor
Device short name	LC1D
Contactor application	Resistive load Motor control
Utilisation category	AC-1 AC-3 AC-4 AC-3e
Poles description	3P
[Ue] rated operational voltage	Power circuit: $\leq 690$ V AC 25...400 Hz Power circuit: $\leq 300$ V DC
[Ie] rated operational current	32 A (at $<60$ °C) at $\leq 440$ V AC AC-3 for power circuit 50 A (at $<60$ °C) at $\leq 440$ V AC AC-1 for power circuit 32 A (at $<60$ °C) at $\leq 440$ V AC AC-3e for power circuit
[Uc] control circuit voltage	110 V AC 50/60 Hz

## Complementary

Motor power kW	7.5 kW at 220...230 V AC 50/60 Hz (AC-3) 15 kW at 380...400 V AC 50/60 Hz (AC-3) 15 kW at 415...440 V AC 50/60 Hz (AC-3) 18.5 kW at 500 V AC 50/60 Hz (AC-3) 18.5 kW at 660...690 V AC 50/60 Hz (AC-3) 7.5 kW at 400 V AC 50/60 Hz (AC-4) 7.5 kW at 220...230 V AC 50/60 Hz (AC-3e) 15 kW at 380...400 V AC 50/60 Hz (AC-3e) 15 kW at 415...440 V AC 50/60 Hz (AC-3e) 18.5 kW at 500 V AC 50/60 Hz (AC-3e) 18.5 kW at 660...690 V AC 50/60 Hz (AC-3e)
Motor power hp	2 hp at 115 V AC 50/60 Hz for 1 phase motors 5 hp at 230/240 V AC 50/60 Hz for 1 phase motors 10 hp at 200/208 V AC 50/60 Hz for 3 phases motors 10 hp at 230/240 V AC 50/60 Hz for 3 phases motors 20 hp at 460/480 V AC 50/60 Hz for 3 phases motors 25 hp at 575/600 V AC 50/60 Hz for 3 phases motors
Compatibility code	LC1D
Pole contact composition	3 NO
Protective cover	With
[Ith] conventional free air thermal current	10 A (at $60$ °C) for signalling circuit 50 A (at $60$ °C) for power circuit
Irms rated making capacity	140 A AC for signalling circuit conforming to IEC 60947-5-1 250 A DC for signalling circuit conforming to IEC 60947-5-1 550 A at 440 V for power circuit conforming to IEC 60947
Rated breaking capacity	550 A at 440 V for power circuit conforming to IEC 60947

<b>[Icw] rated short-time withstand current</b>	260 A 40 °C - 10 s for power circuit 430 A 40 °C - 1 s for power circuit 60 A 40 °C - 10 min for power circuit 138 A 40 °C - 1 min for power circuit 100 A - 1 s for signalling circuit 120 A - 500 ms for signalling circuit 140 A - 100 ms for signalling circuit
<b>Associated fuse rating</b>	10 A gG for signalling circuit conforming to IEC 60947-5-1 63 A gG at <= 690 V coordination type 1 for power circuit 63 A gG at <= 690 V coordination type 2 for power circuit
<b>Average impedance</b>	2 mOhm - lth 50 A 50 Hz for power circuit
<b>Power dissipation per pole</b>	2 W AC-3 5 W AC-1 2 W AC-3e
<b>[Ui] rated insulation voltage</b>	Power circuit: 690 V conforming to IEC 60947-4-1 Power circuit: 600 V CSA certified Power circuit: 600 V UL certified Signalling circuit: 690 V conforming to IEC 60947-1 Signalling circuit: 600 V CSA certified Signalling circuit: 600 V UL certified
<b>Overvoltage category</b>	III
<b>Pollution degree</b>	3
<b>[Uimp] rated impulse withstand voltage</b>	6 kV conforming to IEC 60947
<b>Safety reliability level</b>	B10d = 1369863 cycles contactor with nominal load conforming to EN/ISO 13849-1 B10d = 20000000 cycles contactor with mechanical load conforming to EN/ISO 13849-1
<b>Mechanical durability</b>	15 Mcycles
<b>Electrical durability</b>	1.65 Mcycles 32 A AC-3 at Ue <= 440 V 1.4 Mcycles 50 A AC-1 at Ue <= 440 V 1.65 Mcycles 32 A AC-3e at Ue <= 440 V
<b>Control circuit type</b>	AC at 50/60 Hz standard
<b>Coil technology</b>	Without built-in suppressor module
<b>Control circuit voltage limits</b>	0.3...0.6 U <sub>c</sub> (-40...70 °C):drop-out AC 50/60 Hz 0.8...1.1 U <sub>c</sub> (-40...60 °C):operational AC 50 Hz 0.85...1.1 U <sub>c</sub> (-40...60 °C):operational AC 60 Hz 1...1.1 U <sub>c</sub> (60...70 °C):operational AC 50/60 Hz
<b>Inrush power in VA</b>	70 VA 60 Hz cos phi 0.75 (at 20 °C) 70 VA 50 Hz cos phi 0.75 (at 20 °C)
<b>Hold-in power consumption in VA</b>	7.5 VA 60 Hz cos phi 0.3 (at 20 °C) 7 VA 50 Hz cos phi 0.3 (at 20 °C)
<b>Heat dissipation</b>	2...3 W at 50/60 Hz
<b>Operating time</b>	12...22 ms closing 4...19 ms opening
<b>Maximum operating rate</b>	3600 cyc/h at 60 °C

<b>Connections - terminals</b>	<p>Control circuit: screw clamp terminals 1 1...4 mm<sup>2</sup> - cable stiffness: flexible without cable end</p> <p>Control circuit: screw clamp terminals 2 1...4 mm<sup>2</sup> - cable stiffness: flexible without cable end</p> <p>Control circuit: screw clamp terminals 1 1...4 mm<sup>2</sup> - cable stiffness: flexible with cable end</p> <p>Control circuit: screw clamp terminals 2 1...2.5 mm<sup>2</sup> - cable stiffness: flexible with cable end</p> <p>Control circuit: screw clamp terminals 1 1...4 mm<sup>2</sup> - cable stiffness: solid without cable end</p> <p>Control circuit: screw clamp terminals 2 1...4 mm<sup>2</sup> - cable stiffness: solid without cable end</p> <p>Power circuit: screw clamp terminals 1 2.5...10 mm<sup>2</sup> - cable stiffness: flexible without cable end</p> <p>Power circuit: screw clamp terminals 2 2.5...10 mm<sup>2</sup> - cable stiffness: flexible without cable end</p> <p>Power circuit: screw clamp terminals 1 1...10 mm<sup>2</sup> - cable stiffness: flexible with cable end</p> <p>Power circuit: screw clamp terminals 2 1.5...6 mm<sup>2</sup> - cable stiffness: flexible with cable end</p> <p>Power circuit: screw clamp terminals 1 1.5...10 mm<sup>2</sup> - cable stiffness: solid without cable end</p> <p>Power circuit: screw clamp terminals 2 2.5...10 mm<sup>2</sup> - cable stiffness: solid without cable end</p>
<b>Tightening torque</b>	<p>Control circuit: 1.7 N.m - on screw clamp terminals - with screwdriver flat Ø 6 mm</p> <p>Control circuit: 1.7 N.m - on screw clamp terminals - with screwdriver Philips No 2</p> <p>Power circuit: 2.5 N.m - on screw clamp terminals - with screwdriver flat Ø 6 mm</p> <p>Power circuit: 2.5 N.m - on screw clamp terminals - with screwdriver Philips No 2</p> <p>Control circuit: 1.7 N.m - on screw clamp terminals - with screwdriver pozidriv No 2</p> <p>Power circuit: 2.5 N.m - on screw clamp terminals - with screwdriver pozidriv No 2</p>
<b>Auxiliary contact composition</b>	1 NO + 1 NC
<b>Auxiliary contacts type</b>	<p>type mechanically linked 1 NO + 1 NC conforming to IEC 60947-5-1</p> <p>type mirror contact 1 NC conforming to IEC 60947-4-1</p>
<b>Signalling circuit frequency</b>	25...400 Hz
<b>Minimum switching voltage</b>	17 V for signalling circuit
<b>Minimum switching current</b>	5 mA for signalling circuit
<b>Insulation resistance</b>	> 10 MOhm for signalling circuit
<b>Non-overlap time</b>	<p>1.5 ms on de-energisation between NC and NO contact</p> <p>1.5 ms on energisation between NC and NO contact</p>
<b>Mounting support</b>	<p>Plate</p> <p>Rail</p>

## Environment

<b>Standards</b>	<p>CSA C22.2 No 14</p> <p>EN 60947-4-1</p> <p>EN 60947-5-1</p> <p>IEC 60947-4-1</p> <p>IEC 60947-5-1</p> <p>UL 60947-4-1</p> <p>IEC 60335-1:Clause 30.2</p> <p>IEC 60335-2-40:Annex JJ</p> <p>UL 60335-2-40:Annex JJ</p> <p>CSA C22.2 No 60947-4-1</p>
<b>Product certifications</b>	<p>UL</p> <p>CCC</p> <p>CSA</p> <p>Marine</p> <p>UKCA</p> <p>EAC</p> <p>CB Scheme</p>
<b>IP degree of protection</b>	IP20 front face conforming to IEC 60529
<b>Protective treatment</b>	TH conforming to IEC 60068-2-30
<b>Climatic withstand</b>	<p>conforming to IACS E10 exposure to damp heat</p> <p>conforming to IEC 60947-1 Annex Q category D exposure to damp heat</p>

<b>Permissible ambient air temperature around the device</b>	-40...60 °C 60...70 °C with derating
<b>Operating altitude</b>	0...3000 m
<b>Fire resistance</b>	850 °C conforming to IEC 60695-2-1
<b>Flame retardance</b>	V1 conforming to UL 94
<b>Mechanical robustness</b>	Vibrations contactor open (2 Gn, 5...300 Hz) Vibrations contactor closed (4 Gn, 5...300 Hz) Shocks contactor closed (15 Gn for 11 ms) Shocks contactor open (8 Gn for 11 ms)
<b>Height</b>	85 mm
<b>Width</b>	45 mm
<b>Depth</b>	92 mm
<b>Net weight</b>	0.375 kg

## Packing Units

<b>Unit Type of Package 1</b>	PCE
<b>Number of Units in Package 1</b>	1
<b>Package 1 Height</b>	5.200 cm
<b>Package 1 Width</b>	9.300 cm
<b>Package 1 Length</b>	11.300 cm
<b>Package 1 Weight</b>	416.000 g
<b>Unit Type of Package 2</b>	S02
<b>Number of Units in Package 2</b>	20
<b>Package 2 Height</b>	15.000 cm
<b>Package 2 Width</b>	30.000 cm
<b>Package 2 Length</b>	40.000 cm
<b>Package 2 Weight</b>	8.520 kg
<b>Unit Type of Package 3</b>	P06
<b>Number of Units in Package 3</b>	320
<b>Package 3 Height</b>	75.000 cm
<b>Package 3 Width</b>	60.000 cm
<b>Package 3 Length</b>	80.000 cm
<b>Package 3 Weight</b>	146.064 kg

## Logistical informations

<b>Country of origin</b>	FR
--------------------------	----

## Contractual warranty

<b>Warranty</b>	18 months
-----------------	-----------



## Environmental Data

Schneider Electric aims to achieve Net Zero status by 2050 through supply chain partnerships, lower impact materials, and circularity via our ongoing “Use Better, Use Longer, Use Again” campaign to extend product lifetimes and recyclability.

[Environmental Data explained >](#)

[How we assess product sustainability >](#)

### Environmental footprint

Total lifecycle Carbon footprint 147

Environmental Disclosure [Product Environmental Profile](#)

### Use Better

#### Materials and Substances

Packaging made with recycled cardboard Yes

Packaging without single use plastic Yes

[EU RoHS Directive](#) Compliant

REACH Regulation [REACH Declaration](#)

PVC free Yes

### Use Again

#### Repack and remanufacture

Recyclability potential, in % 66

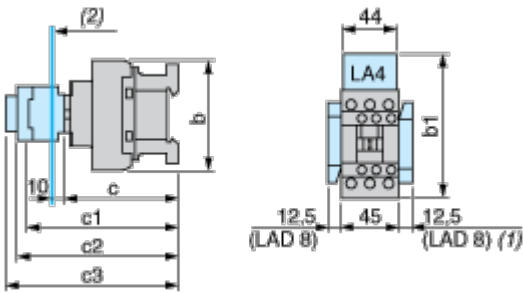
End of life manual availability [End of Life Information](#)

Take-back No

WEEE Label  The product must be disposed on European Union markets following specific waste collection and never end up in rubbish bins

Dimensions Drawings

Dimensions



- (1) Including LAD 4BB
- (2) Minimum electrical clearance

LC1		D25...D38 (3-pole)
<b>b</b>	without add-on blocks	85
	with LAD 4BB	98
<b>b1</b>	with LA4 D•2	114 <sup>(1)</sup>
	with LA4 DF, DT	123 <sup>(1)</sup>
	with LA4 DW, DL	130 <sup>(1)</sup>
<b>c</b>	without cover or add-on blocks	90
	with cover, without add-on blocks	92
<b>c1</b>	with LAD N or C (2 or 4 contacts)	123
<b>c2</b>	with LA6 DK10, LAD 6K10	135
<b>c3</b>	with LAD T, R, S	143
	with LAD T, R, S and sealing cover	147
<b>(1)</b>	Including LAD 4BB.	

Connections and Schema

Wiring

---



Offer Marketing Illustration

Product benefits / Features

---

### TeSys Deca Contactors

**Reliable**  
Multi-standard solutions, high reliability, long mechanical and electrical durability for different sizes, and the most complete accessories.

**Energy efficiency**  
These electronic-coil contactors require up to 80 % less energy than electro-mechanical contactors.

**Universal**  
Multi standards certified (IEC, UL, CSA, CCC, EAC, Marine), Green Premium compliant (RoHS/REACH).



The image shows a TeSys Deca contactor, a black industrial electrical component with a green label that reads 'TeSys Schneider Electric'. It has multiple terminals and a handle on top. The background of the slide is white with green accents and icons.

Offer Marketing Illustration

Product benefits / Features

---



The image shows a TeSys Deca contactor, model LC1D09, which is a three-phase AC contactor. It is a black plastic unit with a green control panel. The top panel has three main terminals labeled 1, 2, and 3. The middle panel has three auxiliary terminals labeled 13 NO, 12 NC, and 14. The bottom panel has three main terminals labeled 4, 5, and 6. The Schneider logo and 'TeSys Deca' branding are visible on the front.

### TeSys Deca Contactors

#### Technical Benefits

- Deca green delivers a consistent low consumption range of contactors from 9 A to 80 A.
- Covers control voltage from 24 to 250 V, with same coils for AC and DC.
- Designed to meet the requirements of industrial and HVAC applications
- With IEC60335-1 compliance, improved fire resistance, and dust-proof auxiliaries
- Suitable for safety applications thanks to mechanically linked contacts and mirror contacts
- Outstanding breaking/making capacity up to 20 In with PLC direct connection

Offer Marketing Illustration

Product benefits / Features

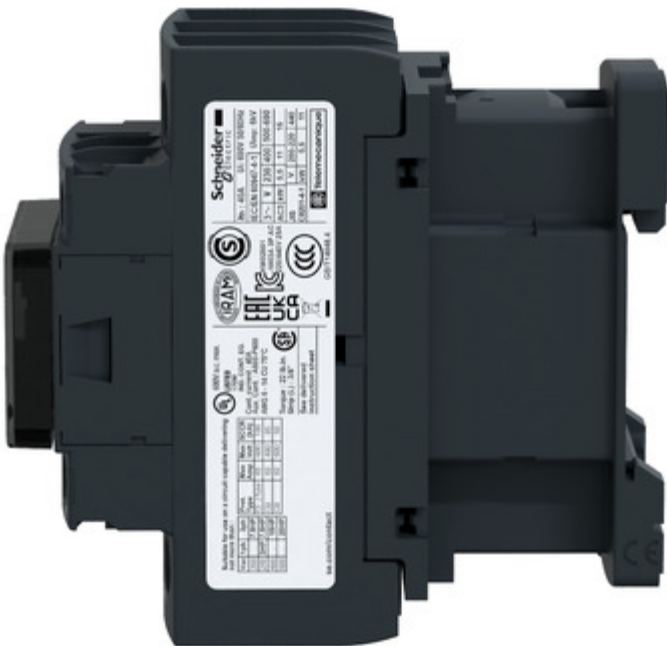
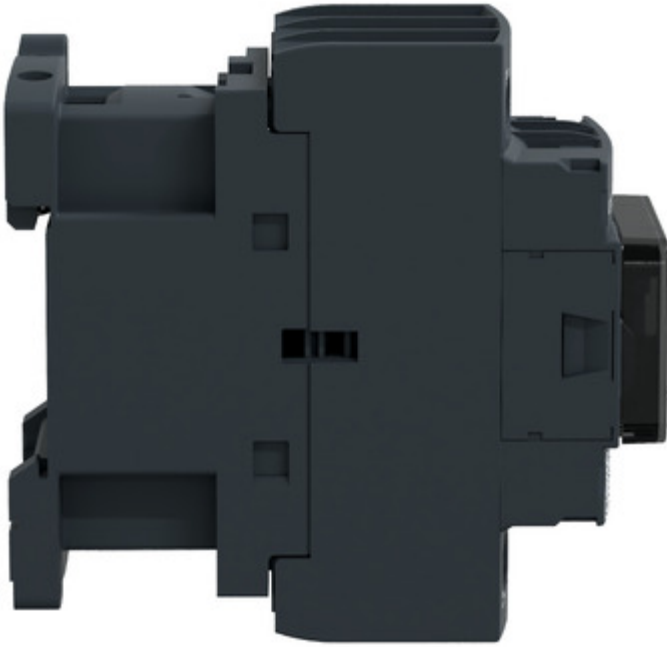
---



Image of product / Alternate images

Alternative

---



**Schneider**  
ELECTRIC

Mod. 32A - 3P - 300V 50/60Hz  
AC-3B (2.1) 300V 3W  
AC-3 (2.2) 300V 3W  
AC-3 (2.3) 300V 3W  
AC-3 (2.4) 300V 3W  
AC-3 (2.5) 300V 3W  
AC-3 (2.6) 300V 3W  
AC-3 (2.7) 300V 3W  
AC-3 (2.8) 300V 3W  
AC-3 (2.9) 300V 3W  
AC-3 (3.0) 300V 3W  
AC-3 (3.1) 300V 3W  
AC-3 (3.2) 300V 3W  
AC-3 (3.3) 300V 3W  
AC-3 (3.4) 300V 3W  
AC-3 (3.5) 300V 3W  
AC-3 (3.6) 300V 3W  
AC-3 (3.7) 300V 3W  
AC-3 (3.8) 300V 3W  
AC-3 (3.9) 300V 3W  
AC-3 (4.0) 300V 3W  
AC-3 (4.1) 300V 3W  
AC-3 (4.2) 300V 3W  
AC-3 (4.3) 300V 3W  
AC-3 (4.4) 300V 3W  
AC-3 (4.5) 300V 3W  
AC-3 (4.6) 300V 3W  
AC-3 (4.7) 300V 3W  
AC-3 (4.8) 300V 3W  
AC-3 (4.9) 300V 3W  
AC-3 (5.0) 300V 3W  
AC-3 (5.1) 300V 3W  
AC-3 (5.2) 300V 3W  
AC-3 (5.3) 300V 3W  
AC-3 (5.4) 300V 3W  
AC-3 (5.5) 300V 3W  
AC-3 (5.6) 300V 3W  
AC-3 (5.7) 300V 3W  
AC-3 (5.8) 300V 3W  
AC-3 (5.9) 300V 3W  
AC-3 (6.0) 300V 3W  
AC-3 (6.1) 300V 3W  
AC-3 (6.2) 300V 3W  
AC-3 (6.3) 300V 3W  
AC-3 (6.4) 300V 3W  
AC-3 (6.5) 300V 3W  
AC-3 (6.6) 300V 3W  
AC-3 (6.7) 300V 3W  
AC-3 (6.8) 300V 3W  
AC-3 (6.9) 300V 3W  
AC-3 (7.0) 300V 3W  
AC-3 (7.1) 300V 3W  
AC-3 (7.2) 300V 3W  
AC-3 (7.3) 300V 3W  
AC-3 (7.4) 300V 3W  
AC-3 (7.5) 300V 3W  
AC-3 (7.6) 300V 3W  
AC-3 (7.7) 300V 3W  
AC-3 (7.8) 300V 3W  
AC-3 (7.9) 300V 3W  
AC-3 (8.0) 300V 3W  
AC-3 (8.1) 300V 3W  
AC-3 (8.2) 300V 3W  
AC-3 (8.3) 300V 3W  
AC-3 (8.4) 300V 3W  
AC-3 (8.5) 300V 3W  
AC-3 (8.6) 300V 3W  
AC-3 (8.7) 300V 3W  
AC-3 (8.8) 300V 3W  
AC-3 (8.9) 300V 3W  
AC-3 (9.0) 300V 3W  
AC-3 (9.1) 300V 3W  
AC-3 (9.2) 300V 3W  
AC-3 (9.3) 300V 3W  
AC-3 (9.4) 300V 3W  
AC-3 (9.5) 300V 3W  
AC-3 (9.6) 300V 3W  
AC-3 (9.7) 300V 3W  
AC-3 (9.8) 300V 3W  
AC-3 (9.9) 300V 3W  
AC-3 (10.0) 300V 3W



Technical Illustration

Assembly's dimensions

---

