

# Product datasheet

Specifications



## TeSys D contactor - 4P(4 NO) - AC-1 - $\leq 440$ V 25 A - 24 V DC standard coil

Local distributor code:

386105205

LC1DT25BD

**EAN Code: 3389110247794**

## Main

<b>Range</b>	TeSys TeSys Deca
<b>Range of product</b>	TeSys Deca
<b>Product or component type</b>	Contactors
<b>Device short name</b>	LC1D
<b>Contactors application</b>	Resistive load
<b>Utilisation category</b>	AC-1
<b>Poles description</b>	4P
<b>[Ue] rated operational voltage</b>	Power circuit: $\leq 690$ V AC 25...400 Hz Power circuit: $\leq 300$ V DC
<b>[Ie] rated operational current</b>	25 A (at $\leq 60$ °C) at $\leq 440$ V AC AC-1 for power circuit
<b>[Uc] control circuit voltage</b>	24 V DC

## Complementary

<b>Compatibility code</b>	LC1D
<b>Pole contact composition</b>	4 NO
<b>Protective cover</b>	With
<b>[Ith] conventional free air thermal current</b>	10 A (at $60$ °C) for signalling circuit 25 A (at $60$ °C) for power circuit
<b>Irms rated making capacity</b>	140 A AC for signalling circuit conforming to IEC 60947-5-1 250 A DC for signalling circuit conforming to IEC 60947-5-1 250 A at 440 V for power circuit conforming to IEC 60947
<b>Rated breaking capacity</b>	250 A at 440 V for power circuit conforming to IEC 60947
<b>[Icw] rated short-time withstand current</b>	30 A $40$ °C - 10 min for power circuit 61 A $40$ °C - 1 min for power circuit 105 A $40$ °C - 10 s for power circuit 210 A $40$ °C - 1 s for power circuit 100 A - 1 s for signalling circuit 120 A - 500 ms for signalling circuit 140 A - 100 ms for signalling circuit
<b>Associated fuse rating</b>	10 A gG for signalling circuit conforming to IEC 60947-5-1 40 A gG at $\leq 690$ V coordination type 1 for power circuit 25 A gG at $\leq 690$ V coordination type 2 for power circuit
<b>Average impedance</b>	2.5 mOhm - Ith 25 A 50 Hz for power circuit
<b>Power dissipation per pole</b>	1.56 W AC-1

<b>[Ui] rated insulation voltage</b>	Power circuit: 600 V CSA certified Power circuit: 600 V UL certified Signalling circuit: 690 V conforming to IEC 60947-1 Signalling circuit: 600 V CSA certified Signalling circuit: 600 V UL certified Power circuit: 690 V conforming to IEC 60947-4-1
<b>Overvoltage category</b>	III
<b>Pollution degree</b>	3
<b>[Uimp] rated impulse withstand voltage</b>	6 kV conforming to IEC 60947
<b>Safety reliability level</b>	B10d = 1369863 cycles contactor with nominal load conforming to EN/ISO 13849-1 B10d = 20000000 cycles contactor with mechanical load conforming to EN/ISO 13849-1
<b>Mechanical durability</b>	30 Mcycles
<b>Electrical durability</b>	0.8 Mcycles 25 A AC-1 at $U_e \leq 440$ V
<b>Control circuit type</b>	DC standard
<b>Coil technology</b>	Built-in bidirectional peak limiting diode suppressor
<b>Control circuit voltage limits</b>	0.1...0.25 $U_c$ (-40...70 °C):drop-out DC 0.7...1.25 $U_c$ (-40...60 °C):operational DC 1...1.25 $U_c$ (60...70 °C):operational DC
<b>Inrush power in W</b>	5.4 W (at 20 °C)
<b>Hold-in power consumption in W</b>	5.4 W at 20 °C
<b>Operating time</b>	20 ±20 % ms opening 63 ±15 % ms closing
<b>Time constant</b>	28 ms
<b>Maximum operating rate</b>	3600 cyc/h at 60 °C
<b>Connections - terminals</b>	Control circuit: screw clamp terminals 2 1...2.5 mm <sup>2</sup> - cable stiffness: flexible with cable end Control circuit: screw clamp terminals 1 1...4 mm <sup>2</sup> - cable stiffness: flexible without cable end Control circuit: screw clamp terminals 2 1...4 mm <sup>2</sup> - cable stiffness: flexible without cable end Control circuit: screw clamp terminals 1 1...4 mm <sup>2</sup> - cable stiffness: flexible with cable end Control circuit: screw clamp terminals 1 1...4 mm <sup>2</sup> - cable stiffness: solid without cable end Control circuit: screw clamp terminals 2 1...4 mm <sup>2</sup> - cable stiffness: solid without cable end Power circuit: screw clamp terminals 1 1...4 mm <sup>2</sup> - cable stiffness: flexible without cable end Power circuit: screw clamp terminals 2 1...4 mm <sup>2</sup> - cable stiffness: flexible without cable end Power circuit: screw clamp terminals 1 1...4 mm <sup>2</sup> - cable stiffness: flexible with cable end Power circuit: screw clamp terminals 2 1...2.5 mm <sup>2</sup> - cable stiffness: flexible with cable end Power circuit: screw clamp terminals 1 1...4 mm <sup>2</sup> - cable stiffness: solid without cable end Power circuit: screw clamp terminals 2 1...4 mm <sup>2</sup> - cable stiffness: solid without cable end
<b>Tightening torque</b>	Control circuit: 1.7 N.m - on screw clamp terminals - with screwdriver flat Ø 6 mm Control circuit: 1.7 N.m - on screw clamp terminals - with screwdriver Philips No 2 Power circuit: 1.7 N.m - on screw clamp terminals - with screwdriver flat Ø 6 mm Power circuit: 1.7 N.m - on screw clamp terminals - with screwdriver Philips No 2 Control circuit: 1.7 N.m - on screw clamp terminals - with screwdriver pozidriv No 2 Power circuit: 1.7 N.m - on screw clamp terminals - with screwdriver pozidriv No 2
<b>Auxiliary contact composition</b>	1 NO + 1 NC
<b>Auxiliary contacts type</b>	type mechanically linked 1 NO + 1 NC conforming to IEC 60947-5-1 type mirror contact 1 NC conforming to IEC 60947-4-1
<b>Signalling circuit frequency</b>	25...400 Hz
<b>Minimum switching voltage</b>	17 V for signalling circuit

<b>Minimum switching current</b>	5 mA for signalling circuit
<b>Insulation resistance</b>	> 10 MOhm for signalling circuit
<b>Non-overlap time</b>	1.5 ms on de-energisation between NC and NO contact 1.5 ms on energisation between NC and NO contact
<b>Mounting support</b>	Rail Plate

## Environment

<b>Standards</b>	CSA C22.2 No 14 EN 60947-4-1 EN 60947-5-1 IEC 60947-4-1 IEC 60947-5-1 UL 60947-4-1 IEC 60335-1
<b>Product certifications</b>	DNV GL CCC LROS (Lloyds register of shipping) RINA BV GOST UL CSA CB
<b>IP degree of protection</b>	IP20 front face conforming to IEC 60529
<b>Protective treatment</b>	TH conforming to IEC 60068-2-30
<b>Climatic withstand</b>	conforming to IACS E10 exposure to damp heat conforming to IEC 60947-1 Annex Q category D exposure to damp heat
<b>Permissible ambient air temperature around the device</b>	-40...60 °C 60...70 °C with derating
<b>Operating altitude</b>	0...3000 m
<b>Fire resistance</b>	850 °C conforming to IEC 60695-2-1
<b>Flame retardance</b>	V1 conforming to UL 94
<b>Mechanical robustness</b>	Vibrations contactor open (2 Gn, 5...300 Hz) Vibrations contactor closed (4 Gn, 5...300 Hz) Shocks contactor closed (15 Gn for 11 ms) Shocks contactor open (10 Gn for 11 ms)
<b>Height</b>	85 mm
<b>Width</b>	45 mm
<b>Depth</b>	99 mm
<b>Net weight</b>	0.365 kg

## Packing Units

<b>Unit Type of Package 1</b>	PCE
<b>Number of Units in Package 1</b>	1
<b>Package 1 Height</b>	5.500 cm
<b>Package 1 Width</b>	9.500 cm
<b>Package 1 Length</b>	12.000 cm
<b>Package 1 Weight</b>	556.000 g
<b>Unit Type of Package 2</b>	S02
<b>Number of Units in Package 2</b>	16

Package 2 Height	15.000 cm
Package 2 Width	30.000 cm
Package 2 Length	40.000 cm
Package 2 Weight	9.335 kg
Unit Type of Package 3	P06
Number of Units in Package 3	256
Package 3 Height	75.000 cm
Package 3 Width	60.000 cm
Package 3 Length	80.000 cm
Package 3 Weight	155.500 kg

## Logistical informations

Country of origin	ID
-------------------	----

## Contractual warranty

Warranty	18 months
----------	-----------

## Environmental Data

Schneider Electric aims to achieve Net Zero status by 2050 through supply chain partnerships, lower impact materials, and circularity via our ongoing “Use Better, Use Longer, Use Again” campaign to extend product lifetimes and recyclability.

[Environmental Data explained >](#)

[How we assess product sustainability >](#)

### Environmental footprint

Total lifecycle Carbon footprint 45

Environmental Disclosure [Product Environmental Profile](#)

### Use Better

#### Materials and Substances

Packaging made with recycled cardboard Yes

Packaging without single use plastic Yes

[EU RoHS Directive](#) Compliant with Exemptions

SCIP Number 50ae7612-fd2e-41e4-a369-50d0dea6e592

REACH Regulation [REACH Declaration](#)

PVC free Yes

### Use Again

#### Repack and remanufacture

Recyclability potential, in % 75

End of life manual availability [End of Life Information](#)

Take-back No

WEEE Label  The product must be disposed on European Union markets following specific waste collection and never end up in rubbish bins

Offer Marketing Illustration

Product benefits / Features

---



The image shows a TeSys Deca contactor, model LC1D09, which is a three-phase AC contactor. It is a black plastic unit with a green control panel. The top panel has three main terminals labeled 1, 2, and 3. The middle panel has three auxiliary terminals labeled 13 NO, 14 NO, and 22 NC. The bottom panel has three main terminals labeled 4, 5, and 6. The Schneider logo and 'TeSys Deca' branding are visible on the green panel.

### TeSys Deca Contactors

#### Technical Benefits

- Deca green delivers a consistent low consumption range of contactors from 9 A to 80 A.
- Covers control voltage from 24 to 250 V, with same coils for AC and DC.
- Designed to meet the requirements of industrial and HVAC applications
- With IEC60335-1 compliance, improved fire resistance, and dust-proof auxiliaries
- Suitable for safety applications thanks to mechanically linked contacts and mirror contacts
- Outstanding breaking/making capacity up to 20 In with PLC direct connection

Offer Marketing Illustration

Product benefits / Features

---



Offer Marketing Illustration

Product benefits / Features

---

## TeSys Deca Contactors



The image shows a stack of three TeSys Deca contactors. The top unit is labeled 'LC1 D09', the middle 'TeSys Schneider Electric', and the bottom 'Cable'. Each unit has multiple terminals and a handle on the side.

**Reliable**  
Multi-standard solutions, high reliability, long mechanical and electrical durability for different sizes, and the most complete accessories.

**Energy efficiency**  
These electronic-coil contactors require up to 80 % less energy than electro-mechanical contactors.

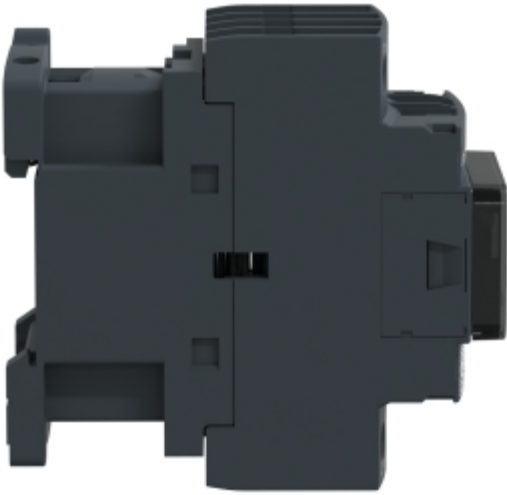
**Universal**  
Multi standards certified (IEC, UL, CSA, CCC, EAC, Marine), Green Premium compliant (RoHS/REACH).

Image of product / Alternate images

Alternative

---





Technical Illustration

Assembly's dimensions

---

