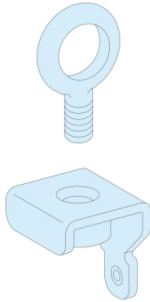


Product datasheet

Specifications



4 LIFTING RINGS

LVS08700

EAN Code: 3606481869876

Main

Range	PrismaSeT
Range of product	PrismaSeT P
Product or component type	Ring
Accessory / separate part category	Enclosure accessory
Accessory / separate part type	Lifting
Range compatibility	PrismaSeT PrismaSeT P framework
Product compatibility	IP55 enclosure

Complementary

installation description	Cubicle
Quantity per set	Set of 4
Material	Steel
Height	53 mm
Width	54 mm
Depth	10 mm
Net weight	0.72 kg
Colour	Natural

Packing Units

Unit Type of Package 1	PCE
Number of Units in Package 1	1
Package 1 Height	5.000 cm
Package 1 Width	10.000 cm
Package 1 Length	11.000 cm
Package 1 Weight	941.000 g
Unit Type of Package 2	S02
Number of Units in Package 2	10
Package 2 Height	15.000 cm
Package 2 Width	30.000 cm
Package 2 Length	40.000 cm
Package 2 Weight	9.710 kg

Unit Type of Package 3	P12
Number of Units in Package 3	480
Package 3 Height	101.000 cm
Package 3 Width	80.000 cm
Package 3 Length	120.000 cm
Package 3 Weight	465.680 kg

Logistical informations

Country of origin FR

Contractual warranty

Warranty 18 months

Environmental Data

Schneider Electric aims to achieve Net Zero status by 2050 through supply chain partnerships, lower impact materials, and circularity via our ongoing “Use Better, Use Longer, Use Again” campaign to extend product lifetimes and recyclability.

[Environmental Data explained >](#)

[How we assess product sustainability >](#)

Environmental footprint

[Environmental Disclosure](#)

[Product Environmental Profile](#)

Use Better

Materials and Substances

Packaging made with recycled cardboard

Yes

Packaging without single use plastic

No

[EU RoHS Directive](#)

Compliant

REACH Regulation

[REACH Declaration](#)

Halogen-free status

Halogen free plastic parts product

PVC free

Yes

Silicone-free

Yes

Use Again

Repack and remanufacture

End of life manual availability

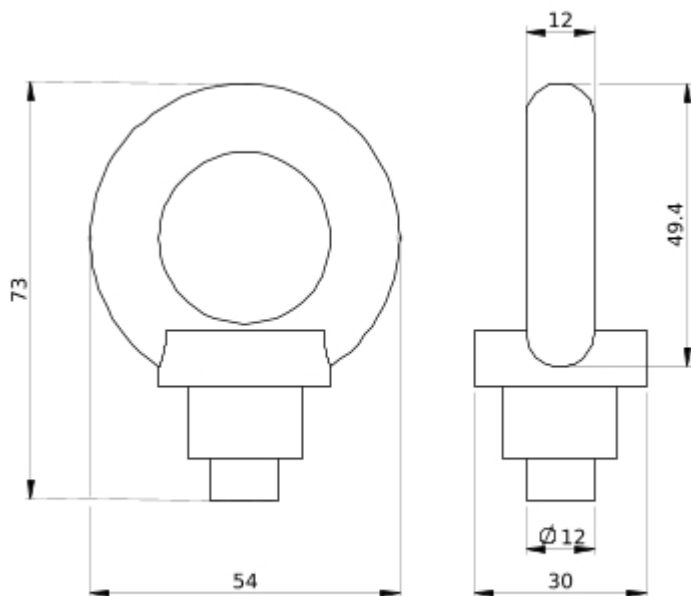
No need of specific recycling operations

Take-back

No

Technical Illustration

Dimensions



- All dimensions are approximate and are in mm
- Also see technical documentation.