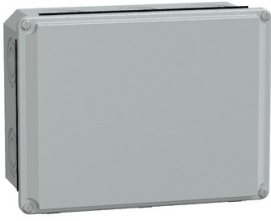


# Product datasheet

Specifications



## Metal industrial cut-out box - low plain cover - H206xW156xD83 - IP55 - grey

Local distributor code:

398244659

NSYDB2015M

**EAN Code: 3606480187780**

### Main

Range of product	PanelSeT SDB
Device application	Multi-purpose
Product or component type	Junction box
enclosure type	Empty enclosure
Type of front cover	Low plain cover
Colour	Light grey (RAL 7035)

### Complementary

Enclosure nominal height	206 mm
Enclosure nominal width	156 mm
Enclosure nominal depth	83 mm
Enclosure mounting	Wall mounted
Device composition	1 body 1 cover 1 cover screw
Cable entry number	5 diameter: 20.5 mm (M20) 5 diameter: 25.5 mm (M25) 5 diameter: 32.5 mm (M32) 5 diameter: 40.5 mm (M40)
Cover fixing	Screw
Material	Steel
Surface finish	Epoxy-polyester powder
Net weight	1.023 kg

### Environment

Standards	IEC 62208
IP degree of protection	IP55 conforming to IEC 60529
IK degree of protection	IK07 conforming to IEC 62262

### Packing Units

Unit Type of Package 1	PCE
Number of Units in Package 1	1
Package 1 Height	9.000 cm
Package 1 Width	16.000 cm

Package 1 Length	21.000 cm
Package 1 Weight	1.023 kg
Unit Type of Package 2	CAR
Number of Units in Package 2	5
Package 2 Height	17.500 cm
Package 2 Width	23.000 cm
Package 2 Length	44.500 cm
Package 2 Weight	5.126 kg
Unit Type of Package 3	PAM
Number of Units in Package 3	250
Package 3 Height	99.500 cm
Package 3 Width	100.000 cm
Package 3 Length	120.000 cm
Package 3 Weight	271.000 kg

## Logistical informations

Country of origin	IN
-------------------	----

## Contractual warranty

Warranty	18 months
----------	-----------



## Environmental Data

Schneider Electric aims to achieve Net Zero status by 2050 through supply chain partnerships, lower impact materials, and circularity via our ongoing “Use Better, Use Longer, Use Again” campaign to extend product lifetimes and recyclability.

[Environmental Data explained >](#)

[How we assess product sustainability >](#)

### Environmental footprint

Total lifecycle Carbon footprint 9

Environmental Disclosure [Product Environmental Profile](#)

## Use Better

### Materials and Substances

Packaging made with recycled cardboard No

Packaging without single use plastic No

[EU RoHS Directive](#) Pro-active compliance (Product out of EU RoHS legal scope)

REACH Regulation [REACH Declaration](#)

## Use Again

### Repack and remanufacture

Recyclability potential, in % 96

End of life manual availability No need of specific recycling operations

Take-back No

Offer Marketing Illustration

Product benefits / Features

---



Waterproofness IP55  
Robustness IK07

Metal junction boxes

Directly wall-mounted