

Product datasheet

Specifications



PratiKa wander socket - straight - 16 A - 2P + E - 200...250 V AC - IP67

Local distributor code:

411663939

PKY16M723

EAN Code: 3303432010539

Main

Range	Mureva
Product or component type	Wander socket
Device short name	Mureva fast
Plug, socket category	Low voltage
Poles description	2P + E
Network type	AC
Outlet standard	Industrial

Complementary

Plug, socket, control station shape	Straight
[In] rated current	16 A
[Ue] rated operational voltage	200...250 V
Network frequency	50/60 Hz
Ground lug clockwise position	6 h
Plug, socket material	Housing: self-extinguishing engineering polymer
Contacts material	Sleeves: brass
Connections - terminals	Fast connection
Cable cross section	1...2.5 mm ²
Cable outer diameter	8...15 mm
cable entry	Cable gland
Thread type	Pg 21
Net weight	0.198 kg
Height	84 mm
Width	84 mm
Depth	142 mm
Colour	Grey (RAL 7035)
Voltage colour	Blue

Environment

Standards	IEC 60309-2 IEC 60309-1
IP degree of protection	IP67 conforming to IEC 60529

IK degree of protection	IK08 conforming to EN 62262
Fire resistance	850 °C conforming to IEC 60695-2-1
Relative humidity	50 % at 40 °C 70 % at 30 °C 90 % at 20 °C
Ambient air temperature for operation	35 °C (86400 s) -25...40 °C

Packing Units

Unit Type of Package 1	PCE
Number of Units in Package 1	1
Package 1 Height	7.200 cm
Package 1 Width	8.100 cm
Package 1 Length	15.300 cm
Package 1 Weight	176.000 g
Unit Type of Package 2	BB1
Number of Units in Package 2	10
Package 2 Height	12.000 cm
Package 2 Width	27.000 cm
Package 2 Length	26.300 cm
Package 2 Weight	1.955 kg
Unit Type of Package 3	S03
Number of Units in Package 3	30
Package 3 Height	30.000 cm
Package 3 Width	30.000 cm
Package 3 Length	40.000 cm
Package 3 Weight	6.352 kg

Logistical informations

Country of origin	IT
--------------------------	----

Contractual warranty

Warranty	18 months
-----------------	-----------

Environmental Data

Schneider Electric aims to achieve Net Zero status by 2050 through supply chain partnerships, lower impact materials, and circularity via our ongoing “Use Better, Use Longer, Use Again” campaign to extend product lifetimes and recyclability.

[Environmental Data explained >](#)

[How we assess product sustainability >](#)

Environmental footprint

Total lifecycle Carbon footprint 7

Environmental Disclosure [Product Environmental Profile](#)

Use Better

Materials and Substances

Packaging made with recycled cardboard Yes

Packaging without single use plastic Yes

[EU RoHS Directive](#) Compliant with Exemptions

SCIP Number 89350e0d-a4ac-4516-bf86-fdaed8a227fc

REACH Regulation [REACH Declaration](#)

Use Again

Repack and remanufacture

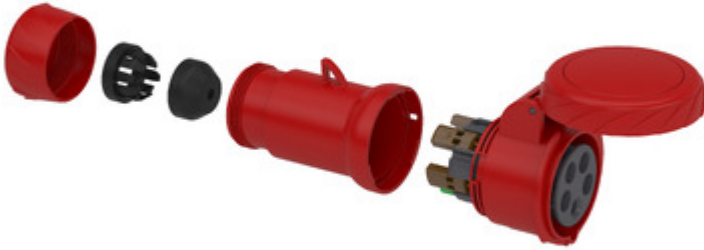
End of life manual availability No need of specific recycling operations

Take-back No

WEEE Label  The product must be disposed on European Union markets following specific waste collection and never end up in rubbish bins

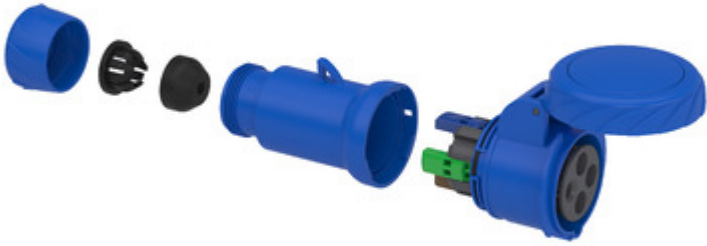
Technical Illustration

Exploded view



Technical Illustration

Exploded view



Technical Illustration

Exploded view

