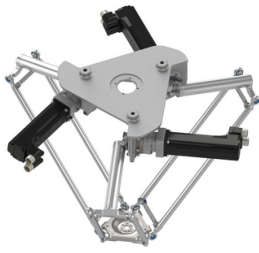


Product datasheet

Specifications



Delta 3 robot, P1, 3-5 axis, 10 kg permissible load, 0-600 mm working envelop

VRKP1S0FNC00000

EAN Code: 3606481732866

Main

Range of product	Lexium P, T
Device short name	P1
Product or component type	Delta 3 robot
Design	Compact

Complementary

Number of axis	3
Operating travel	0...600 mm horizontal 0...206 mm vertical
Repeat accuracy	0.05 mm
Permanent permissible load	10 kg
Maximum actuation speed	6 m/s
Maximum acceleration	125 m/s ² at 1 kg 120 m/s ² at 1.5 kg
Net weight	27.9 kg
Range compatibility	Lexium SH3 motor

Environment

Environmental characteristic	Normal environment
------------------------------	--------------------

Packing Units

Unit Type of Package 1	PCE
Number of Units in Package 1	1
Package 1 Height	92.0 cm
Package 1 Width	121.0 cm
Package 1 Length	121.0 cm
Package 1 Weight	44.0 kg

Contractual warranty

Warranty	18 months
----------	-----------

Environmental Data

Schneider Electric aims to achieve Net Zero status by 2050 through supply chain partnerships, lower impact materials, and circularity via our ongoing “Use Better, Use Longer, Use Again” campaign to extend product lifetimes and recyclability.

[Environmental Data explained >](#)

[How we assess product sustainability >](#)

Environmental footprint

Total lifecycle Carbon footprint 13894

Environmental Disclosure [Product Environmental Profile](#)

Use Better

Materials and Substances

Packaging made with recycled cardboard Yes

Packaging without single use plastic No

[EU RoHS Directive](#) Pro-active compliance (Product out of EU RoHS legal scope)

REACH Regulation [REACH Declaration](#)

Use Again

Repack and remanufacture

End of life manual availability [End of Life Information](#)

Take-back No

Image of product / Alternate images

Alternative

