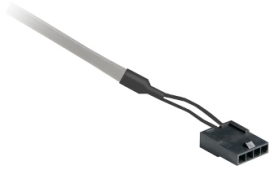


Product datasheet

Specifications

LXM28 STO connection cable 1m

VW3M1C20R10



EAN Code: 3606480736032

Main

Range of product	Lexium 28
Product or component type	Safe torque off cable
Accessory / separate part type	Preassembled STO cordset
Accessory / separate part category	Connection accessories
Product compatibility	Servo drive LXM28
Accessory / separate part destination	Between servo drive and logic controller
Range compatibility	Lexium 28
Cable length	1 m

Complementary

Electrical connection	Connector - Molex 4-pin for servo drive side Free end for CN9 interface
Net weight	0.1 kg

Packing Units

Unit Type of Package 1	PCE
Number of Units in Package 1	1
Package 1 Height	1.500 cm
Package 1 Width	17.000 cm
Package 1 Length	18.000 cm
Package 1 Weight	71.000 g
Unit Type of Package 2	S02
Number of Units in Package 2	20
Package 2 Height	15.000 cm
Package 2 Width	30.000 cm
Package 2 Length	40.000 cm
Package 2 Weight	1.770 kg

Logistical informations

Country of origin	TN
-------------------	----

Contractual warranty

Warranty

18 months


Environmental Data

Schneider Electric aims to achieve Net Zero status by 2050 through supply chain partnerships, lower impact materials, and circularity via our ongoing “Use Better, Use Longer, Use Again” campaign to extend product lifetimes and recyclability.

[Environmental Data explained >](#)

[How we assess product sustainability >](#)

Use Better

 Materials and Substances	
Packaging made with recycled cardboard	No
Packaging without single use plastic	No
EU RoHS Directive	Pro-active compliance (Product out of EU RoHS legal scope)
REACH Regulation	REACH Declaration
PVC free	Yes

Use Again

 Repack and remanufacture	
Take-back	No