

Product datasheet

Specifications



Empty enclosure, plastic, dark grey lid, for push button Ø22, 5 cut-outs

Local distributor code:

237256342

XALD05

EAN Code: 3389110114843

Main

Range of product	Harmony XALD
Product or component type	Empty control station
Device short name	XALD
Product destination	For XB5 Ø 22 mm control and signalling units
Number of cut-out	5 cut-outs
Colour of base of enclosure	Light grey (RAL 7035)
Colour of cover	Dark grey (RAL 7016)
Material	Polycarbonate
Cable entry	2 knock-outs for cable entry, clamping capacity: 14 mm 2 knock-outs for Pg 13 cable gland and ISO M20, clamping capacity: 12 mm
IP degree of protection	IP66 conforming to IEC 60529 IP67 IP69 IP69K

Complementary

Assembly style	For customer assembly
Number of horizontal rows	1
Number of vertical rows	5
Net weight	0.322 kg
Resistance to high pressure washer	7000000 Pa at 55 °C, distance : 0.1 m
Mounting of block	Rear mounting Front mounting
electrical composition code	SR2 PR1 SR1 MR1 MF2 MF1 SF1 PF2 PF1 SF2
Main group	5 cut-outs
Group of product	Standard grey

Environment

Protective treatment	TH
----------------------	----

Ambient air temperature for storage	-40...70 °C
Ambient air temperature for operation	-40...70 °C
Overvoltage category	Class II conforming to IEC 60536
NEMA degree of protection	NEMA 13 NEMA 4X
IK degree of protection	IK03 conforming to IEC 62262
Standards	IEC 60947-5-1 IEC 60947-1 CSA C22.2 No 14 JIS C8201-5-1 IEC 60947-5-4 UL 508 IEC 60947-5-5 JIS C8201-1

Packing Units

Unit Type of Package 1	PCE
Number of Units in Package 1	1
Package 1 Height	19.700 cm
Package 1 Width	7.000 cm
Package 1 Length	7.600 cm
Package 1 Weight	299.000 g
Unit Type of Package 2	S03
Number of Units in Package 2	18
Package 2 Height	30.000 cm
Package 2 Width	30.000 cm
Package 2 Length	40.000 cm
Package 2 Weight	5.870 kg
Unit Type of Package 3	P06
Number of Units in Package 3	144
Package 3 Height	75.000 cm
Package 3 Width	60.000 cm
Package 3 Length	80.000 cm
Package 3 Weight	57.836 kg

Logistical informations

Country of origin	CZ
-------------------	----

Contractual warranty

Warranty	18 months
----------	-----------

Environmental Data

Schneider Electric aims to achieve Net Zero status by 2050 through supply chain partnerships, lower impact materials, and circularity via our ongoing “Use Better, Use Longer, Use Again” campaign to extend product lifetimes and recyclability.

[Environmental Data explained >](#)

[How we assess product sustainability >](#)

Environmental footprint

Total lifecycle Carbon footprint 2

Environmental Disclosure [Product Environmental Profile](#)

Use Better

Materials and Substances

Packaging made with recycled cardboard Yes

Packaging without single use plastic Yes

[EU RoHS Directive](#) Pro-active compliance (Product out of EU RoHS legal scope)

REACH Regulation [REACH Declaration](#)

Use Again

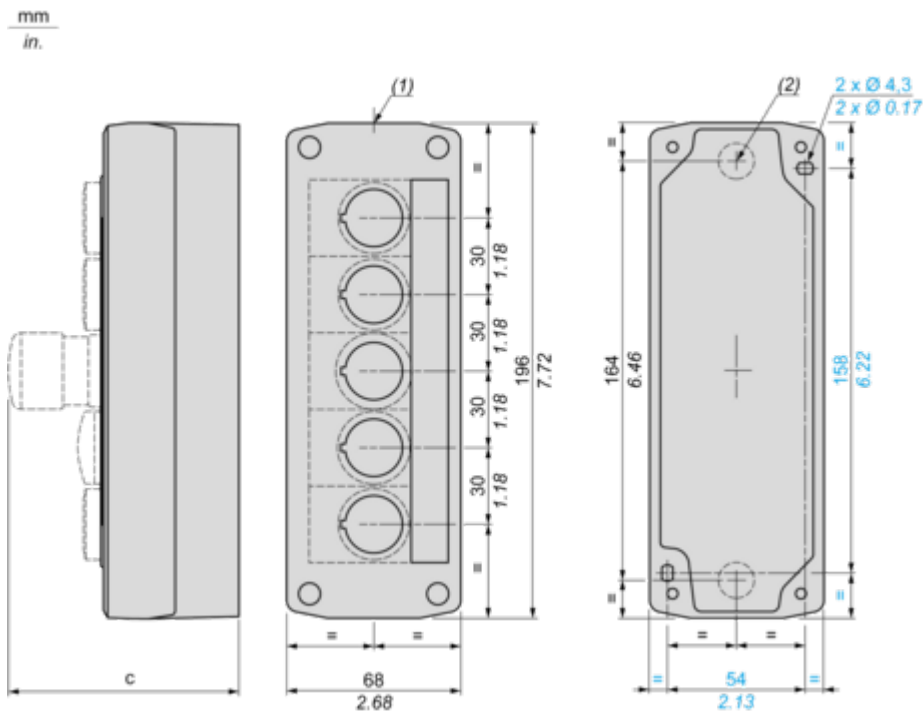
Repack and remanufacture

End of life manual availability [End of Life Information](#)

Take-back No

Dimensions Drawings

Dimensions



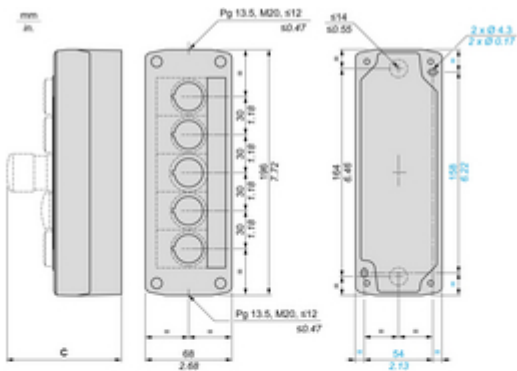
(1) 2 knock-outs for Pg 13.5 cable gland, maximum capacity 12 mm/0.47 in.

(2) Knock-out for cable entry, maximum capacity 14 mm/0.55 in.

Control station fitted with:	c in mm	c in in.
Flush pushbutton	62	2.44
Pilot light	64	2.52
Illuminated pushbutton	65.5	2.58
Projecting pushbutton	66	2.60
Selector switch	80	3.15
Mushroom head pushbutton	91.5	3.58
Latching mushroom head Emergency stop pushbutton with key	115	4.53
Key switch	105.5	4.15

Technical Illustration

Dimensions



C	mm	in.
ZBSA1*, ZBSA10*	62	2.44
ZBSA1*	64	2.52
ZBSA1*	65.5	2.58
ZBSA1*, ZBSA11*, ZBSA12*, ZBSA13*	66	2.6
ZBSA1*, ZBSA1*	80	3.15
ZBSA1*, ZBSA1*, ZBSA1*, ZBSA1*, ZBSA1*, ZBSA1*, ZBSA1*, ZBSA1*, ZBSA1*, ZBSA1*	91.5	3.58
ZBSA1*, ZBSA1*, ZBSA1*	115	4.53
ZBSA1*	105.5	4.15

Offer Marketing Illustration

Product benefits / Features

Technical Benefits

Harmony XALD



Offer Marketing Illustration

Product benefits / Features

Features Harmony XALD



 Full compatibility with the Ø 22 mm plastic push buttons, switches and pilot lights of the Harmony XB5 range

 Possibility to add up to 3 NO or NC contact blocks per operating head

 Complete, ready-to-install stations with 1 to 3 buttons for the most common functions

 Polycarbonate pre-drilled control stations

 Modular system and simple to cable universal range

Image of product / Alternate images

Alternative



