

Product datasheet

Specifications



Illuminated unit for modular tower lights, plastic, red, Ø70, steady, bulb or LED not included, 250 V

Local distributor code:

380607822

XVBC34

⚠ To be discontinued on: 31 Dec 2025

⚠ To be discontinued

Important message: XVBC is being substituted by XVBC7 as complete range; XVBC and XVBC7 modules are not interoperable with one another.

EAN Code: 3389110845075

Main

Range of product	Harmony XVBC Universal
Product or component type	Indicator bank
Beacon or indicator bank unit type	Illuminated unit
Signalling type	Steady
Mounting diameter	70 mm
Component name	XVBC
Material	Polycarbonate
Light source	Bulb not included, red
Bulb type	Incandescent with BA 15d base Protected LED
[Us] rated supply voltage	<= 250 V

Complementary

Assembly style	Customer assembly, up to 5 units
Maximum power dissipation in W	7 W
Connections - terminals	Screw clamp terminals, <= 1 x 1.5 mm ² with cable end
[Ui] rated insulation voltage	250 V conforming to IEC 60947-1
Nominal voltage limit	0.85...1.1 Un conforming to IEC 60947-5-1
[Uimp] rated impulse withstand voltage	4 kV conforming to IEC 60947-1
CAD overall width	70 mm
CAD overall height	63 mm
CAD overall depth	70 mm

Environment

Pollution degree	2
Product certifications	CCC EAC CSA C22-2 No 14 UL 508
Standards	IEC 60947-5-1

Protective treatment	TC
Ambient air temperature for storage	-40...70 °C
Ambient air temperature for operation	-25...50 °C: LED -25...70 °C: incandescent
Electrical shock protection class	Class I on support tube conforming to IEC 61140 Class II on base unit conforming to IEC 61140
IP degree of protection	IP65 on fixing base XVBZ0. conforming to IEC 60529 IP66 on base unit conforming to IEC 60529
NEMA degree of protection	Type 4X conforming to UL (indoor)

Packing Units

Unit Type of Package 1	PCE
Number of Units in Package 1	1
Package 1 Height	10.500 cm
Package 1 Width	10.000 cm
Package 1 Length	10.000 cm
Package 1 Weight	136.000 g
Unit Type of Package 2	S03
Number of Units in Package 2	36
Package 2 Height	30.000 cm
Package 2 Width	30.000 cm
Package 2 Length	40.000 cm
Package 2 Weight	5.597 kg
Unit Type of Package 3	P06
Number of Units in Package 3	288
Package 3 Height	75.000 cm
Package 3 Width	60.000 cm
Package 3 Length	80.000 cm
Package 3 Weight	52.508 kg

Logistical informations

Country of origin	ID
--------------------------	----

Contractual warranty

Warranty	18 months
-----------------	-----------



Environmental Data

Schneider Electric aims to achieve Net Zero status by 2050 through supply chain partnerships, lower impact materials, and circularity via our ongoing “Use Better, Use Longer, Use Again” campaign to extend product lifetimes and recyclability.

[Environmental Data explained >](#)

[How we assess product sustainability >](#)

Environmental footprint

Total lifecycle Carbon footprint 2

Environmental Disclosure [Product Environmental Profile](#)

Use Better

Materials and Substances

Packaging made with recycled cardboard Yes

Packaging without single use plastic Yes

[EU RoHS Directive](#) Pro-active compliance (Product out of EU RoHS legal scope)

SCIP Number 124e2d7a-5b1e-45ca-b93c-220dd91b55b6

REACH Regulation [REACH Declaration](#)

Use Again

Repack and remanufacture

Recyclability potential, in % 9

End of life manual availability [No need of specific recycling operations](#)

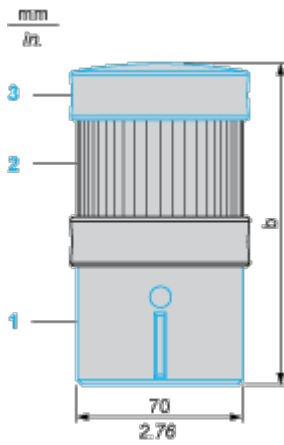
Take-back No

Dimensions Drawings

Indicator Bank without “Flash” Discharge Tube Unit

Dimensions

Below drawing shows the minimum configuration of the product. Select the number of stages according to the product characteristics in order to get **b** dimension.



- (1) Base unit XVBC21, to be ordered separately
- (2) Illuminated or audible signalling unit
- (3) Cover (supplied with XVBC21 base unit)

Number of illuminated or audible signalling units (no “flash”)	b in mm	b in in.
1	138	5.43
2	201	7.91
3	264	10.39
4	327	12.87
5	390	15.35

Indicator Bank with “Flash” Discharge Tube Unit

Dimensions

Below drawing shows the minimum configuration of the product. Select the number of stages according to the product characteristics in order to get **b** dimension.

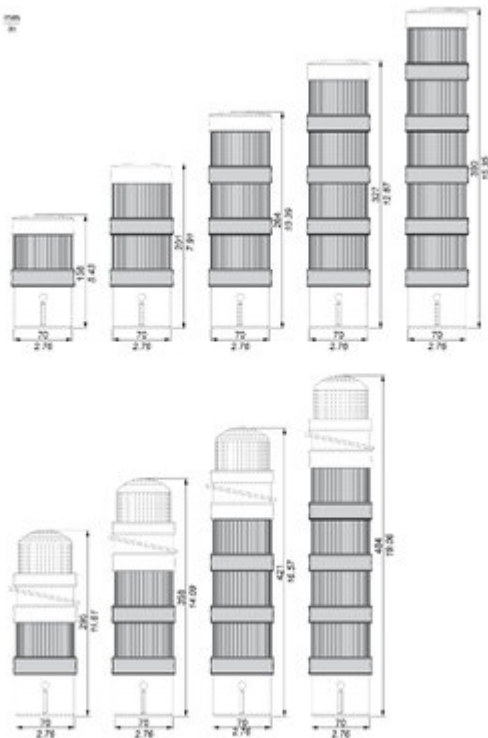


- (1) Base unit XVBC07, to be ordered separately
- (2) Illuminated or audible signalling unit
- (3) “Flash” unit, to be ordered separately

Number of illuminated or audible signalling units other than “flash” tube	b in mm	b in in.
1	295	11.61
2	358	14.09
3	421	16.57
4	484	19.06

Technical Illustration

Dimensions



Offer Marketing Illustration

Product benefits / Features

Technical Benefits

Harmony XVB

Robust product performance with high IP protection and IK05 shock resistance



Greater loudness up to 90dB with continuous and intermittent tones



Conformity with International standards



Beacon lens on top with high intensity 5J, 10J Xenon flash, increase visibility from top and surrounding



Offer Marketing Illustration


Product benefits / Features



The infographic features a central image of two light fixtures: a tall, multi-colored lens unit and a shorter, black unit with a red top. Surrounding this central image are five circular icons, each with a corresponding text block describing a feature. The background is a solid green color.

Features Harmony XVB

- 

3 types of light source: 10-Watt incandescent bulb, built-in high-efficiency LEDs, 5 and 10-joule discharge tube
- 

100,000 hours of maintenance-free lighting thanks to "LED Protected" technology
- 

Connector with removable base, axial, or side cable entry, immediate assembly, and fixing using a locking ring
- 

High degree of protection (IP66) and Shock resistance (IK05)
- 

Fully flexible and interchangeable construction of up to 5 lens units (six colors of light lens unit)

Image of product / Alternate images

Alternative



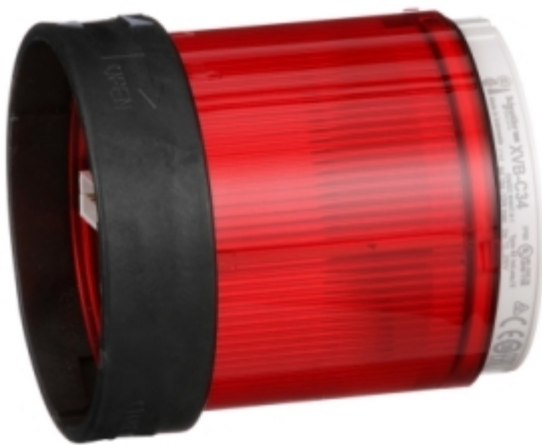
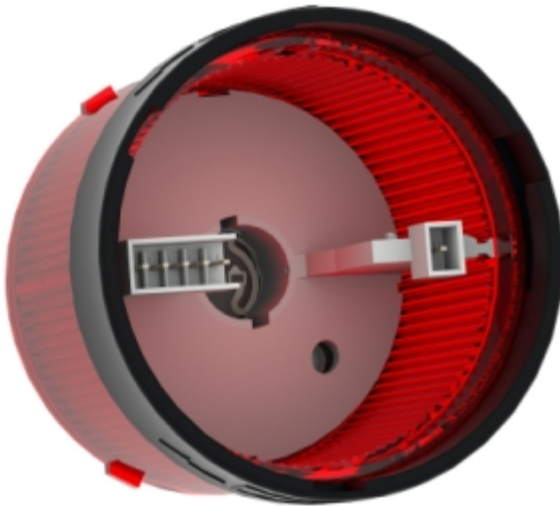




Image of product in real life situation

