

# Rittal – The System.

Faster – better – everywhere.



## SV 9342.800 PinBlock

State: 30/04/2025 (Source: [rittal.com/uk-en](http://rittal.com/uk-en))

ENCLOSURES

POWER DISTRIBUTION

CLIMATE CONTROL

IT INFRASTRUCTURE

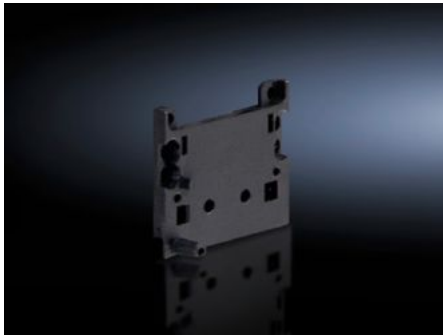
SOFTWARE & SERVICES

FRIEDHELM LOH GROUP



# SV 9342.800 - PinBlock for support frames

For reliable attachment and positioning of the contactor on motor starter combinations.



## Features

Model No.	SV 9342.800
Product description	For reliable attachment and positioning of the contactor on motor starter combinations. Simple clip-on mounting onto the support frame. Individual vertical positioning is achieved by relocating the PinBlock.
Material	Polyamide
Colour	RAL 9005
Support frame width	45 mm
Note	UL approval in conjunction with OM adaptor/support
Packs of	5 pc(s).
Net weight	0.04
Gross weight	0.036
Customs tariff number	39269097
EAN	4028177503847
ETIM 9	EC001900
ECLASS 8.0	27400613