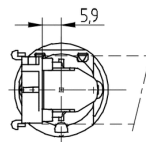
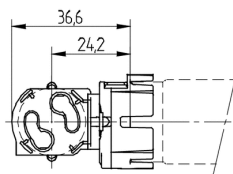
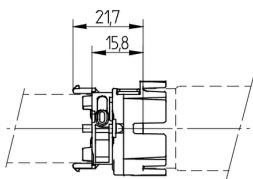
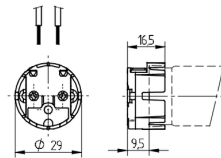
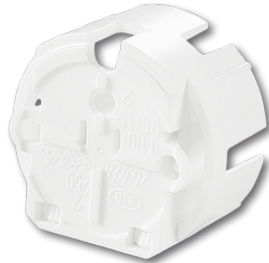


G13 Fluorescent End Mount and Push-In Lampholders

Article number: 26.424.1001-0

EAN: -



Product information "G13 Fluorescent End Mount and Push-In Lampholders"

- The electrical connection is made by pushing the lampholder onto the lamp pins. The lamp must be supported by a supplementary component.

- Additional fixing holes for starter holders 26.515.5317 or 26.515.5301 at the rear.
- UL Recognized Component: File E-92235
- For T8 lamps only

Ausführung:	G13 End Mount and Push-In Lampholders
Color:	white
Fluorescent lamps:	G13
Material:	Housing: PC
Note warranty conditions:	*Warranty conditions of BJB GmbH & Co. KG as stated as available via the Internet under https://www.bjb.com/en/legal-information/general-terms-and-conditions/ are valid.
Packaging quantity:	500
Producttype:	G13 End Mount and Push-In Lampholders
Series:	Linear Fluorescent Lampholders for dry rooms (IP20)
UL:	yes
Weight:	4 g
approbation:	cULus
mounting method 1:	Without mount
old article number:	26.424.1001.50

Available Downloads

- > [US_General_Information](#)
- > [Allgemeine Informationen](#)

Available CAD Downloads

- > [3D-CAD_\(STEP,_Parasolid,_IGES,_3D-PDF\)019-J04-04](#)

Certifications

Article Number	Documents
26.424.1001-0	ENEC_Zeichen-ENEC_Approval1640164
26.424.1001-0	Genehmigung_liegt_vor-Approval_at_hand3677956
26.424.1001-0	Genehmigung_liegt_vor-Approval_at_hand3497826
26.424.1001-0	cULus,_gültig_für_USA_und_Kanada-cULus_(USA_and_Kanada)727851

Article Number

Documents

26.424.1001-0

PSE-Mark_(Japan)-PSE-Mark2008303

T 110



18 AWG0,5 - 1,0 mm²

