



CorePro LED PLC 2P



CorePro LED PLC 6.9W 840 2P G24d-2

CorePro, LED, PL-C, EM/Mains, G24D-2 ROT, 6.9 W, 18W PL-C, 4000 K, 770 lm, CRI 82, 30000 hour(s)

CorePro LED PLC 2P integrates a LED light source into a traditional fluorescent form factor. This product is the ideal solution for uplamping in general lighting applications: it meets basic lighting requirements, offers significant energy savings, and is environmentally friendly.

Product data

| General Information | |
|---------------------------------------|--------------------|
| Cap-Base | G24d-2 |
| Nominal lifetime | 30,000 hour(s) |
| Switching Cycle | 50,000 |
| Lighting Technology | LED |
| Flux measurement reference | Sphere |
| Warranty period | 3 years |
| Light Technical | |
| Color Code | 840 [CCT of 4000K] |
| Beam Angle (Nom) | 120 degree(s) |
| Luminous Flux | 770 lm |
| Color Designation | Cool White (CW) |
| Correlated Color Temperature (Nom) | 4000 K |
| Luminous Efficacy (rated) (Nom) | 111 lm/W |
| Color Consistency | <6 |
| Color rendering index (CRI) | 82 |
| LLMF At End Of Nominal Lifetime (Nom) | 70 % |

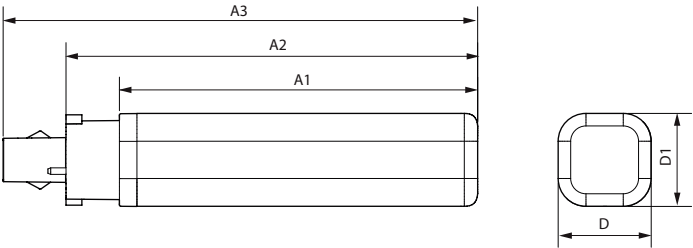
| Photobiological safety according to EN 62471 | RG1 |
|--|-------------|
| Operating and Electrical | |
| Input Frequency | 50 to 60 Hz |
| Power Consumption | 6.9 W |
| Lamp Current (Nom) | 38 mA |
| Starting Time (Nom) | 0.5 s |
| Warm-up time to 60% light | 0.5 s |
| Power Factor (Fraction) | 0.9 |
| Voltage (Nom) | 220-240 V |
| LED alternative to fluorescent lamp power | 18W PL-C |
| Inrush current at mains | 2.78 |
| Max. lamp no. on MCB B type 10A - Mains | 264 |
| Max. lamp no. on MCB B type 10A – EM ballast without Compensation Capacitor. | 264 |
| Max. lamp no. on MCB B type 10A – EM ballast with Compensation Capacitor. | - |
| Max. lamp no. on MCB B type 16A - Mains | 422 |

CorePro LED PLC 2P

| | |
|--|---|
| Max. lamp no. on MCB B type 16A – EM ballast without Compensation Capacitor. | 422 |
| Max. lamp no. on MCB B type 16A – EM ballast with Compensation Capacitor. | - |
| Ballast Compatibility | EM/Mains |
| Temperature | |
| T-Case Maximum (Nom) | 75 °C |
| Controls and Dimming | |
| Dimmable | No |
| Mechanical and Housing | |
| Bulb Finish | Frosted |
| Bulb Material | Plastic |
| Product Length | 125 mm |
| Bulb Shape | PL-C |
| Net Weight (Piece) | 0.075 kg |
| Approval and Application | |
| Energy Efficiency Class | E |
| Energy Saving Product | Yes |
| Approval Marks | RoHS compliance CE marking KEMA Keur certificate |

| | |
|---|------------------------------------|
| Energy Consumption kWh/1000 h | 7 kWh |
| EPREL Registration Number | 1820628 |
| CE mark | Yes |
| EU RoHS compliant | Yes |
| Flickering value (PstLM) - Flickering value as per EN 61000-3-3 | 1 |
| Stroboscopic effect visibility measure (SVM) | 0.4 |
| Ambient temperature range | -20 to +35 °C |
| Product Data | |
| Order product name | CorePro LED PLC 6.9W 840 2P G24d-2 |
| Full product name | CorePro LED PLC 6.9W 840 2P G24d-2 |
| Full product code | 872016928756300 |
| Order code | 929003757302 |
| Material Nr. (12NC) | 929003757302 |
| Numerator - Quantity Per Pack | 1 |
| EAN/UPC - Product/Case | 8720169287563 |
| Numerator - Packs per outer box | 10 |
| EAN/UPC - Case | 8720169287570 |

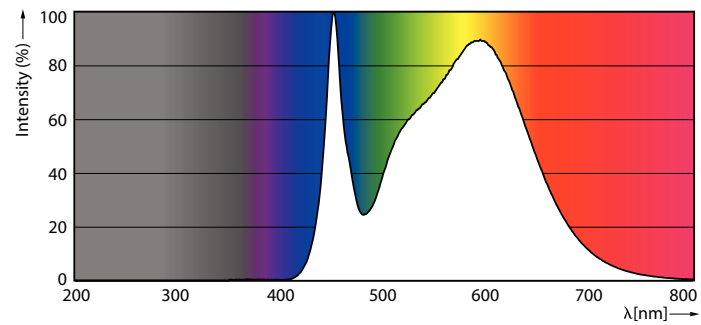
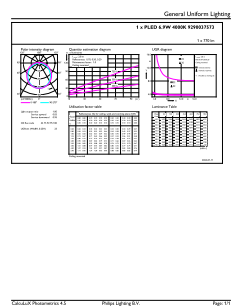
Dimensional drawing



| Product | D1 | D | A1 | A2 | A3 |
|------------------------------------|-------|-------|--------|--------|--------|
| CorePro LED PLC 6.9W 840 2P G24d-2 | 34 mm | 34 mm | 106 mm | 125 mm | 148 mm |

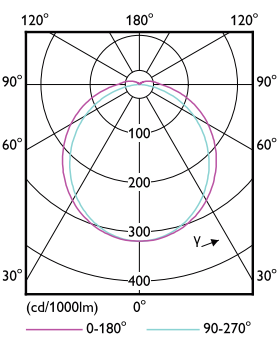
CorePro LED PLC 2P

Photometric data



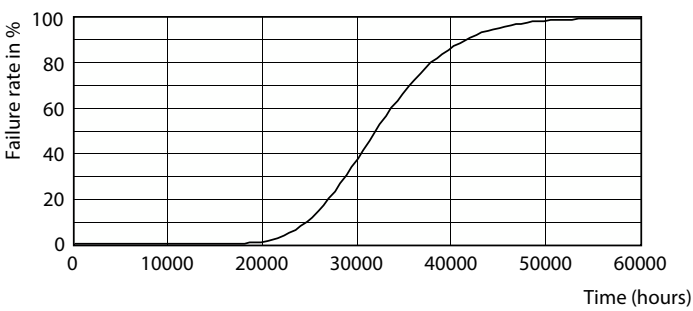
General uniform lighting - CorePro LED PLC 6.9W 840 2P G24d-2

Spectral Power Distribution Colour - CorePro LED PLC 6.9W 840 2P G24d-2

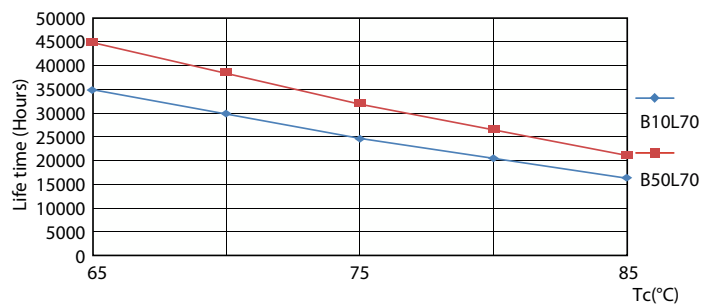


Light Distribution Diagram - CorePro LED PLC 6.9W 840 2P G24d-2

Lifetime



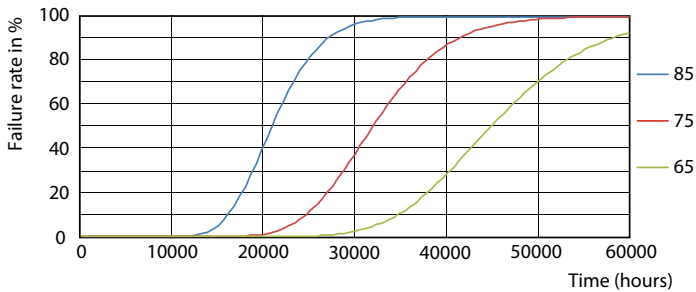
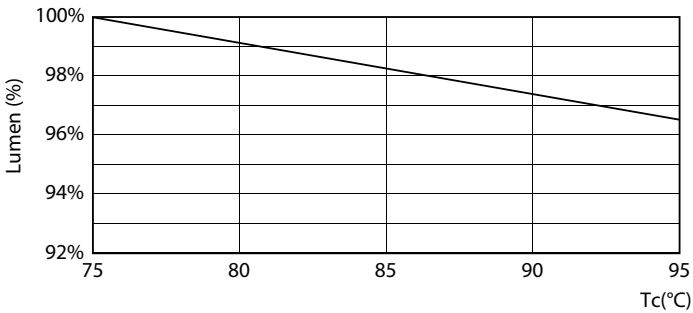
Life Expectancy Diagram



LifetimeVsTc

CorePro LED PLC 2P

Lifetime



Lumen Maintenance Diagram - CorePro LED PLC 6.9W 840 2P G24d-2

FailureRate



Lumen Maintenance Diagram - CorePro LED PLC 6.9W 840 2P G24d-2

