



# MASTER LED tube Mains T5



## MAS LEDtube 600mm HE 7W 840 T5 EU

MASTER, LEDtube, T5, Mains, 600 mm, 7 W, 14W TL5 HE, 4000 K, 1050 lm, CRI 80, 60000 hour(s)

MASTER, LEDtube, T5, Mains, 600 mm, 7 W, LED alternative to 14W TL5 HE, 4000 K, 1050 lm, CRI 80, 60000 hour(s), 150 lm/W, EEL D, G5, Beam angle 200 degree(s), Glass, 600 mm, RG0, SDCM 6, PF 0.9, IP20, SVM 0.4, PstLM 1

### Product data

General Information		Photobiological safety according to EN 62471	
Cap-Base	G5	RG0	
Nominal lifetime	60,000 hour(s)	Operating and Electrical	
Switching Cycle	200,000	Input Frequency	50 to 60 Hz
Lighting Technology	LEDtube	Power Consumption	7 W
Flux measurement reference	Sphere	Lamp Current (Nom)	32 mA
Warranty period	5 years	Starting Time (Nom)	0.5 s
Light Technical		Warm-up time to 60% light	0.5 s
Color Code	840 [CCT of 4000K]	Power Factor (Fraction)	0.9
Beam Angle (Nom)	200 degree(s)	Voltage (Nom)	220-240 V
Luminous Flux	1,050 lm	LED alternative to fluorescent lamp power	14W TL5 HE
Color Designation	Cool White (CW)	Inrush current at mains	4.5
Correlated Color Temperature (Nom)	4000 K	Max. lamp no. on MCB B type 10A - Mains	160
Luminous Efficacy (rated) (Nom)	150 lm/W	Max. lamp no. on MCB B type 10A – EM ballast without Compensation Capacitor.	-
Color Consistency	<6	Max. lamp no. on MCB B type 10A – EM ballast with Compensation Capacitor.	-
Color rendering index (CRI)	80	Max. lamp no. on MCB B type 16A - Mains	254
LLMF At End Of Nominal Lifetime (Nom)	70 %		

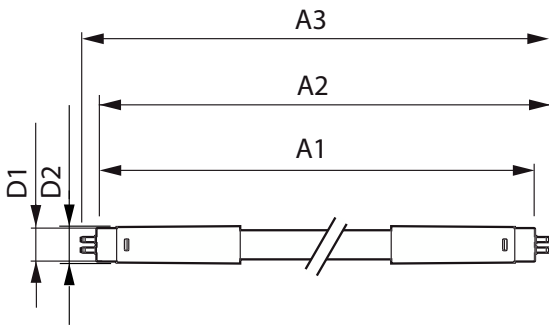
# MASTER LED tube Mains T5

Max. lamp no. on MCB B type 16A – EM ballast without Compensation Capacitor.	-
Max. lamp no. on MCB B type 16A – EM ballast with Compensation Capacitor.	-
Ballast Compatibility	Mains
<b>Temperature</b>	
T-Case Maximum (Nom)	50 °C
<b>Controls and Dimming</b>	
Dimmable	No
<b>Mechanical and Housing</b>	
Bulb Finish	Frosted
Bulb Material	Glass
Product Length	600 mm
Bulb Shape	T5
Net Weight (Piece)	0.070 kg
<b>Approval and Application</b>	
Energy Efficiency Class	D
Energy Saving Product	Yes
Approval Marks	RoHS compliance KEMA Keur certificate
Energy Consumption kWh/1000 h	7 kWh
EPREL Registration Number	1840374

CE mark	Yes
EU RoHS compliant	Yes
Flickering value (PstLM) - Flickering value as per EN 61000-3-3	1
Stroboscopic effect visibility measure (SVM)	0.4
Ambient temperature range	-20 to +45 °C
<b>Application Conditions</b>	
can it be used in closed luminaires	Yes
Wireless Technology	Not applicable

<b>Product Data</b>	
Order product name	MAS LEDtube 600mm HE 7W 840 T5 EU
Full product name	MAS LEDtube 600mm HE 7W 840 T5 EU
Full product code	872016930682000
Order code	929003795502
Material Nr. (12NC)	929003795502
Numerator - Quantity Per Pack	1
EAN/UPC - Product/Case	8720169306820
Numerator - Packs per outer box	10
EAN/UPC - Case	8720169306837

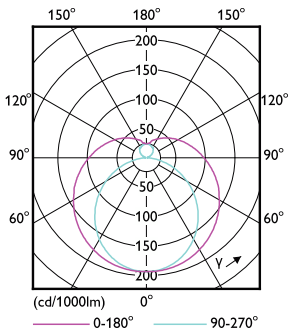
## Dimensional drawing



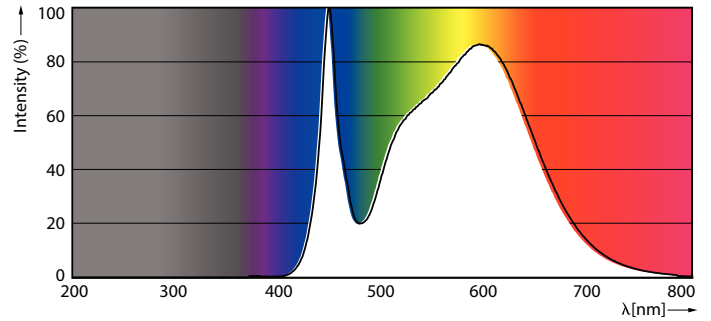
Product	D1	D2	A1	A2	A3
MAS LEDtube 600mm HE 7W 840 T5 EU	15.7 mm	19 mm	549 mm	556.1 mm	563.2 mm

# MASTER LED tube Mains T5

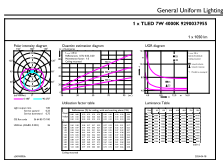
## Photometric data



Light Distribution Diagram - MAS LEDtube 600mm HE 7W 840 T5 EU



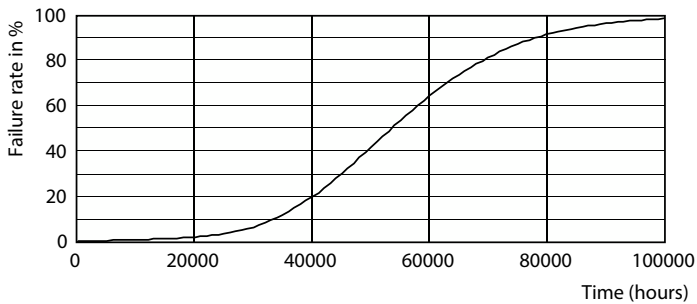
Spectral Power Distribution Colour - MAS LEDtube 600mm HE 7W 840 T5 EU



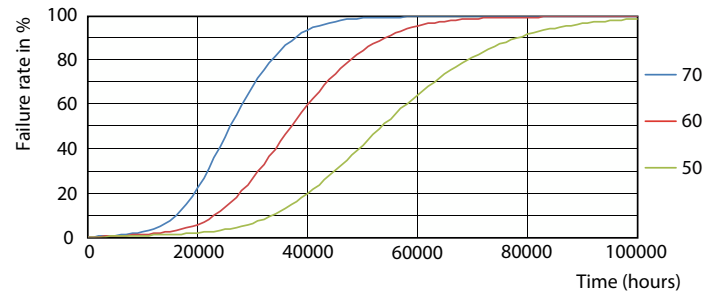
General Uniform Lighting  
1 + 180° 90-270°  
Illuminance [lx] Beam Spread [m] Beam Spread [ft]  
1m 2m 3m 4m 5m 6m 7m 8m 9m 10m  
Page 1/1

General uniform lighting - MAS LEDtube 600mm HE 7W 840 T5 EU

## Lifetime



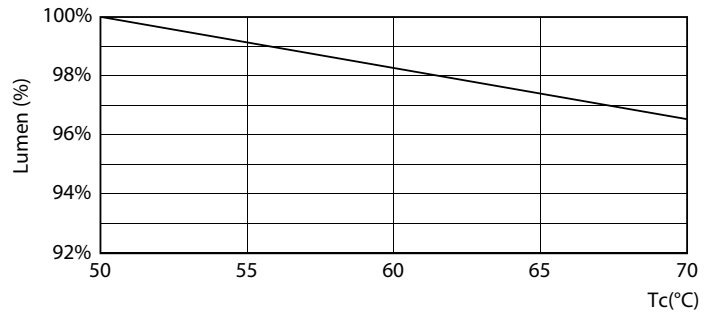
Life Expectancy Diagram



FailureRate

# MASTER LED tube Mains T5

## Lifetime



LifetimeVsTc

Lumen Maintenance Diagram - MAS LEDtube 600mm HE 7W 840 T5 EU



Lumen Maintenance Diagram - MAS LEDtube 600mm HE 7W 840 T5 EU

