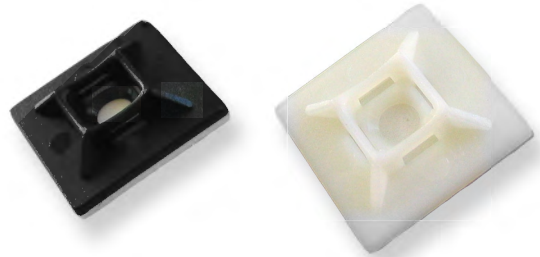


Nylon Cable Tie Accessories

Self Adhesive Mounts - Two Way

Part No.	Size (mm)	To accept Tie width	Colour
SAM20N-2	19 x 19	3.6mm	Natural
SAM20B-2	19 x 19	3.6mm	Black
SAM28N-2	28 x 28	4.8mm	Natural
SAM28B-2	28 x 28	4.8mm	Black



Material: Nylon 6/6

SAM28 supplied with M6 centre screw fixing hole.

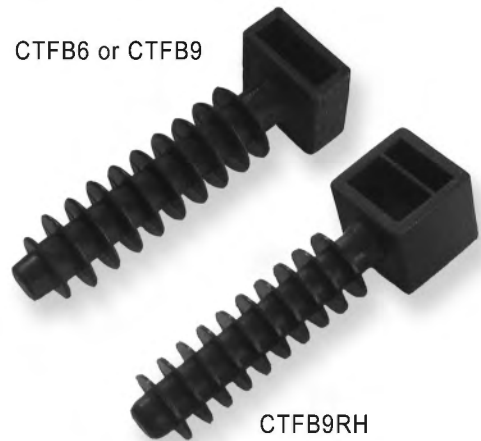
For best results mountings should only be applied to clean, dry, smooth surfaces, free from dust, oils, grease or solvents.

Pack Quantity: 100

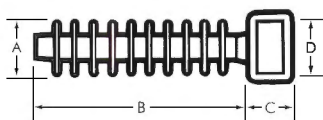
Wall Plug Bases

Part No.	Dimensions (mm)				Drill Hole Size (mm)
	A	B	C	D	
CTFB6	6.8	37	6.0	9.2	6
CTFB9	10	37	6.5	9.2	8
CTFB9RH	10	37	13	9.2	8

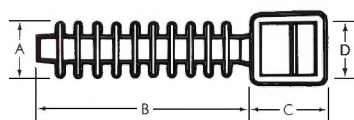
CTFB6 or CTFB9



CTFB9RH



CTFB6 or CTFB9



CTFB9RH

Material: Nylon 6/6.

They are used with cable ties up to 9mm wide. Designed in 2 different types with differing distances from the wall. The wall plug bases avoid friction of the cable on the wall protecting the insulation.

Pack Quantity: 100