



MB1 - MALLEABLE CONDUIT BOX

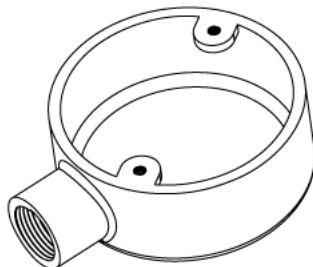
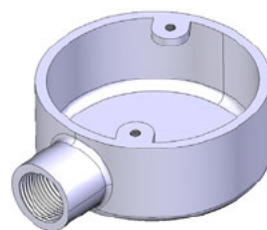
Description MB1G / B - 20mm Terminal Malleable Conduit Box

Finish Galvanised (G) or Black Enamel (B)

Material Malleable Iron

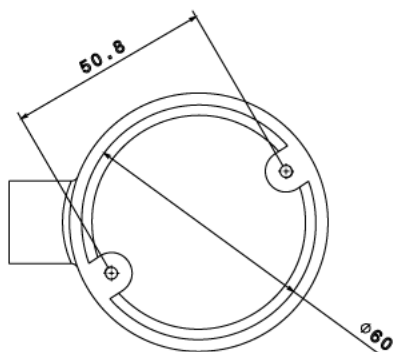
Packaging Packed in qty 10

Additional Notes Compliant to LU Standard 1-085
(For use on surface & sub-surface locations)

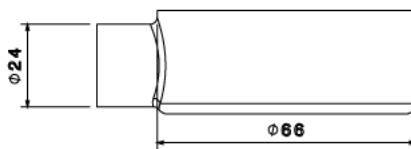


Isometric view

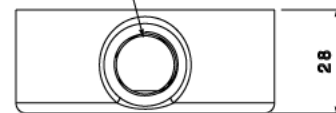
M20 CONDUIT THREAD x16MM DEEP



Top view



Side view



Front view

All measurements in mm unless otherwise stated