



## THB/M6 - M6 CAPTIVE NUT

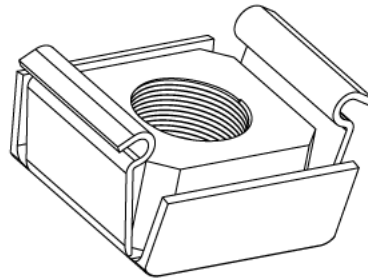
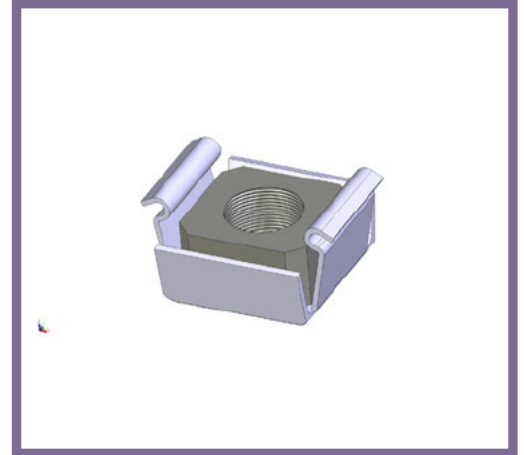
**Description** THB/M6 - M6 Captive Nut

**Finish** BZP

**Material** Steel

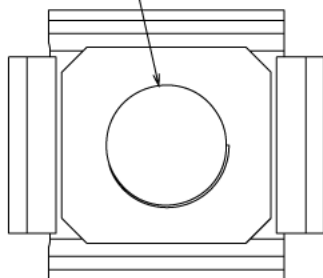
**Packaging** Packed in qty 100

**Additional Notes** Captive M6 Flat Nut Assembly to be used with Metpro Stand Off Brackets  
Compliant to LU Standard 1-085  
( for use on surface & sub-surface locations)

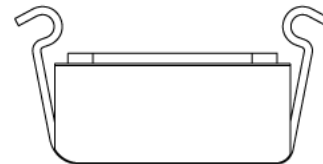


Isometric view

M6 Thread



Top view



Side view

All measurements in mm unless otherwise stated