

WARNINGS:

- Keep a copy of this instruction sheet
- The luminaire shall be installed by a qualified electrician and wired in accordance with the latest IEE electrical regulations or the national requirements.
- For luminaires that require Class II Installations, make sure that the luminaire is NOT connected to any Ground connection.
- Before opening the covers on the LED Driver, turn off the power to the luminaire.
- The luminaire shall, never, be covered with thermal insulation matting or similar material. If thermal insulation is installed in the area of the luminaire, it must maintain spacing a minimum of 330mm above the luminaire, and a minimum of 215mm on the sides of the luminaire.
- Do Not hold the driver when lifting the luminaire.
- Intended for Indoor Use Only. Do not install near wet locations.
- If the external flexible power cable of this luminaire is damaged, it shall be replaced by a qualified person in order to avoid a safety hazard.

NOTES:

- Luminaires not installed nor maintained in accordance with these instructions will have the manufacturer's warranty voided.
- Maintenance cleaning must be restricted to external surfaces.
- Take care to keep the LED lenses clean during installation.
- Make sure fixture is properly aimed, use as reference photometric curve.
- The light source contained in this luminaire shall only be replaced by the manufacturer or his service agent or a similar qualified person.
- LED module **risk group 0**
- In case of malfunction or failure of the LED module replace the luminaire.
- Power supply for brightness control if existing must comply with SELV requirements.

Important Information Regarding Electronic Control Gear (ECG)

- Interference to the neutral conductor in a three-phase system may result in surge-related damage in the lighting installation. Only open neutral conductor disconnect terminal when disconnected from power supply and close prior to switching back on.
- The maximum admissible ambient temperature t_a of the luminaire may not be exceeded. Surpassing that temperature reduces the service life and, in extremecases, poses risk of early failure.

Intended use

- The **REXEL PANEL** luminaire is intended for indoor rooms at an ambient temperature of **t_a 25 °C**.
- The luminaire is suited for further wiring.

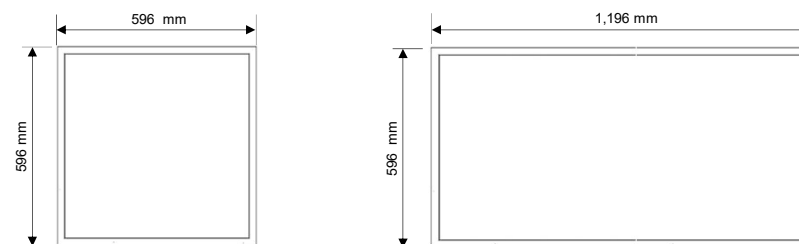
REXEL

LED Flat Panel Luminaire

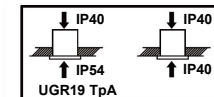
REISS

Reiss Lighting GmbH, Otto-Lilienthal-Str. 2,
88046 Friedrichshafen, GERMANY

INSTALLATION INSTRUCTIONS - ENGLISH



REXEL PANEL **6X6** 3400 L840
REXEL PANEL **12X6** 5600 L840
REXEL PANEL **6X6** 3400 L840 UGR19 TPA
REXEL PANEL **12X6** 5600 L840 UGR19 TPA



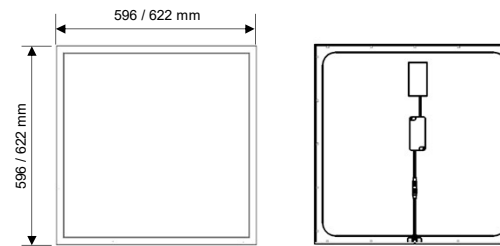
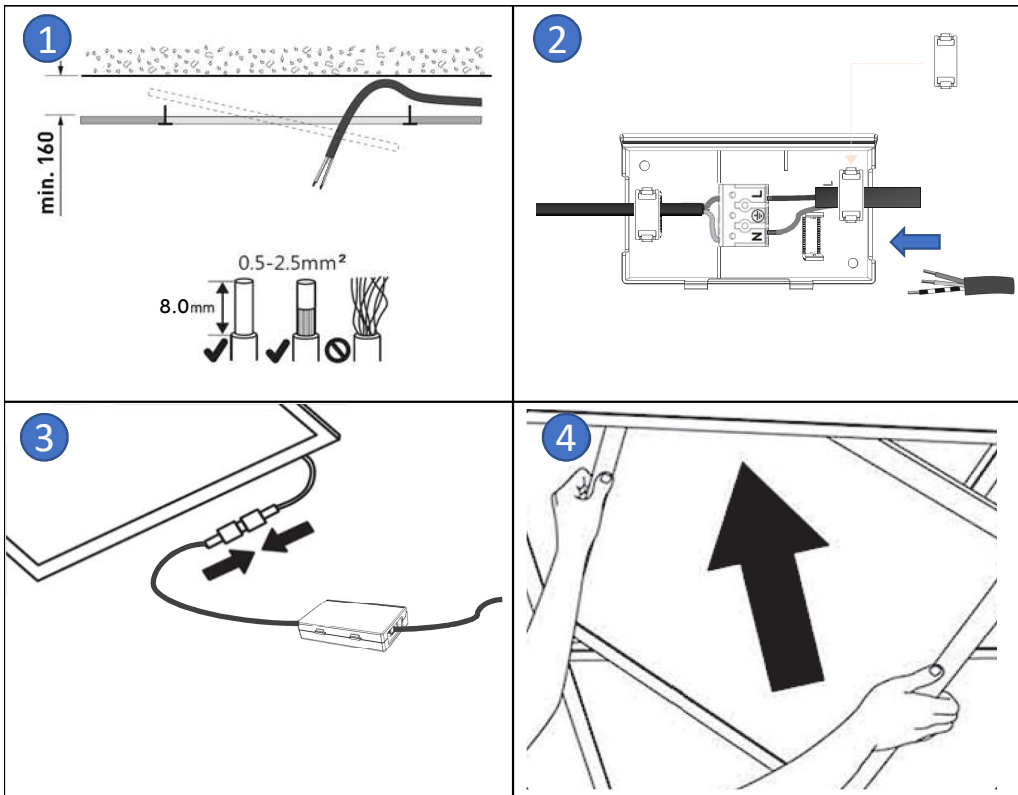
DE Leuchte darf nicht mit
Wärmedämmung
abgedeckt werden

GB Luminaire not suitable for
covering with thermally
insulating material

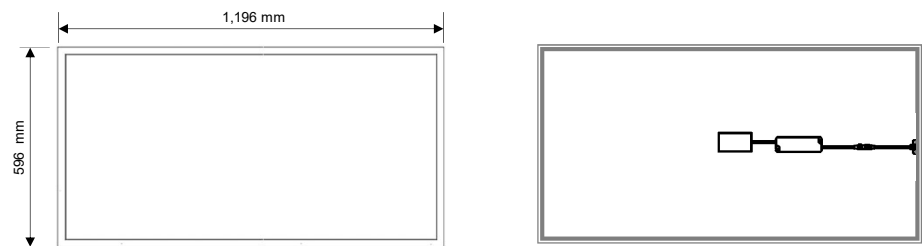
CE

[CZ] Montážní návod
[DE] Montageanleitung
[DK] Monteringsvejledning
[EE] Paigaldusjuhend
[FI] Asennusohje
[FR] Notice de montage
[HU] Szerelési útmutató
[IT] Istruzioni di montaggio

[LT] Montavimo Instrukcijos
[LV] Instalācijas instrukcija
[NO] Monteringsanvisning
[PL] Instrukcja montażu
[RU] Инструкция по монтажу
[SE] Installationsanvisning
[UK] Installation Instructions



REXEL PANEL **6X6** 3400 L840
 REXEL PANEL **6X6** 3400 L840 UGR19 TPA



REXEL PANEL **12X6** 5600 L840
 REXEL PANEL **12X6** 5600 L840 UGR19 TPA