

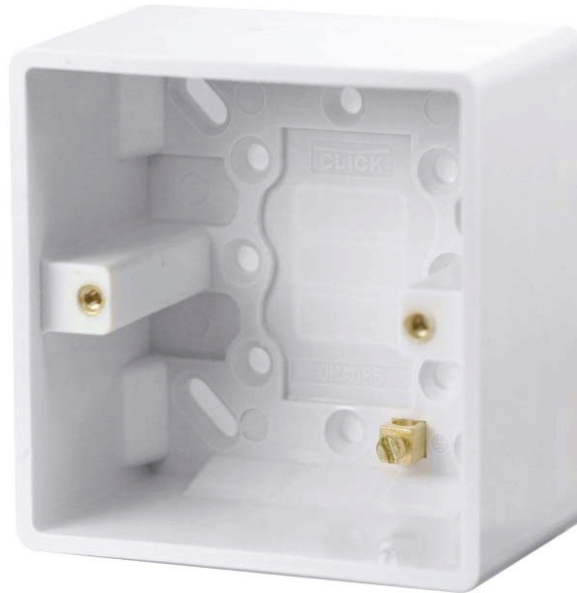
SPECIFICATION SHEET

Product Code

CMA085

Description

1 Gang 47mm Deep Pattress Box With Earth Terminal



General Information	
Dimensions	86mm x 86mm x 47mm
Material composition	Housing: Urea Terminal: Brass
Gang	1
Earth Terminal	Yes
Cable Restraint	No
Warranty	20 Years Domestic

Additional Information	
	<p>Ensure that the mains supply is isolated before commencing installation and refer to the circuit diagram supplied with the relevant product.</p> <p>Bare earth cables must always be covered with appropriate sleeving and wired to the earth terminal.</p> <p>All white moulded accessories are manufactured using Urea Formaldehyde, which has similar inherent properties to antimicrobial additives that inhibit the growth of infectious diseases. All products independently tested achieved a 99.9% kill rate across all four types of the strains of bacteria – MRSA, E-Coli, Salmonella, and Klebsiella Pneumoniae</p>