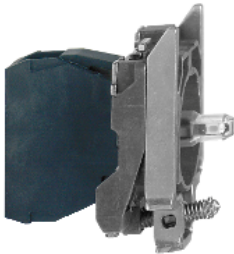


# Product datasheet

Specifications



## white light block with body/fixing collar integral LED 24V

Local distributor code: 237093136    ZB4BVB1

### Main

|                               |  |
|-------------------------------|--|
| Range of product              | Harmony XB4  |
| Product or component type     | Complete body/light block assembly   |
| Device short name             | ZB4  |
| Fixing collar material        | Zamak  |
| Sale per indivisible quantity | 1  |
| Connections - terminals       | Screw clamp terminals, <= 2 x 1.5 mm² with cable end<br>Screw clamp terminals, >= 1 x 0.22 mm² without cable end |
| Light source                  | Protected LED  |
| Bulb base                     | Integral LED   |
| Light source colour           | White  |
| [Us] rated supply voltage     | 24 V AC/DC at 50/60 Hz   |

### Complementary

|  |   |
|--|---|
| CAD overall width                      | 30 mm   |
| CAD overall height                     | 47 mm   |
| CAD overall depth                      | 37 mm   |
| Terminals description ISO n°1          | (X1-X2)PL   |
| Net weight                             | 0.054 kg  |
| Tightening torque                      | 0.8...1.2 N.m conforming to EN 60947-1  |
| Shape of screw head                    | Cross compatible with Philips no 1 screwdriver<br>Cross compatible with pozidriv No 1 screwdriver<br>Slotted compatible with flat Ø 4 mm screwdriver<br>Slotted compatible with flat Ø 5.5 mm screwdriver |
| [Ui] rated insulation voltage          | 600 V (pollution degree 3) conforming to EN 60947-1   |
| [Uimp] rated impulse withstand voltage | 6 kV conforming to EN 60947-1   |
| Signalling type                        | Steady  |
| Supply voltage limits                  | 19.2...30 V DC<br>21.6...26.4 V AC  |
| Current consumption                    | 18 mA   |
| Service life                           | 100000 h at rated voltage and 25 °C   |
| Surge withstand                        | 1 kV conforming to IEC 61000-4-5  |

|                                       |  |
|---------------------------------------|--|
| Device presentation                   | Basic sub-assemblies   |
| <b>Environment</b>                    |  |
| Protective treatment                  | TH   |
| Ambient air temperature for storage   | -40...70 °C  |
| Ambient air temperature for operation | -40...70 °C  |
| Electrical shock protection class     | Class I conforming to IEC 60536  |
| Standards                             | EN/IEC 60947-1<br>JIS C8201-5-1<br>EN/IEC 60947-5-1<br>UL 508<br>CSA C22.2 No 14<br>EN/IEC 60947-5-5<br>EN/IEC 60947-5-4<br>JIS C8201-1  |
| Product certifications                | LROS (Lloyds register of shipping)<br>GL<br>UL listed<br>DNV<br>CSA<br>BV  |
| Vibration resistance                  | 5 gn (f= 2...500 Hz) conforming to IEC 60068-2-6   |
| Shock resistance                      | 30 gn (duration = 18 ms) for half sine wave acceleration conforming to IEC 60068-2-27<br>50 gn (duration = 11 ms) for half sine wave acceleration conforming to IEC 60068-2-27 |
| Resistance to fast transients         | 2 kV conforming to IEC 61000-4-4   |
| Resistance to electromagnetic fields  | 10 V/m conforming to IEC 61000-4-3   |
| Resistance to electrostatic discharge | 6 kV on contact (on metal parts) conforming to IEC 61000-2-6<br>8 kV in free air (in insulating parts) conforming to IEC 61000-2-6   |
| Electromagnetic emission              | Class B conforming to IEC 55011  |

### Packing Units

|                              |            |
|------------------------------|------------|
| Unit Type of Package 1       | PCE        |
| Number of Units in Package 1 | 1          |
| Package 1 Weight             | 54.0 g     |
| Package 1 Height             | 3.4 cm     |
| Package 1 width              | 5.4 cm     |
| Package 1 Length             | 5.6 cm     |
| Unit Type of Package 2       | P06        |
| Number of Units in Package 2 | 1600       |
| Package 2 Weight             | 100.084 kg |
| Package 2 Height             | 77 cm      |
| Package 2 width              | 60 cm      |
| Package 2 Length             | 80 cm      |
| Unit Type of Package 3       | S03        |
| Number of Units in Package 3 | 200        |
| Package 3 Weight             | 10.824 kg  |
| Package 3 Height             | 30 cm      |
| Package 3 width              | 30 cm      |
| Package 3 Length             | 40 cm      |

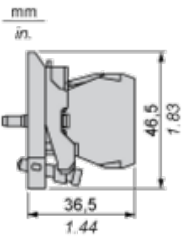
Offer Sustainability

|                            |   |
|----------------------------|---|
| Sustainable offer status   | Green Premium product   |
| REACH Regulation           | <a href="#">REACH Declaration</a>   |
| REACH free of SVHC         | Yes   |
| EU RoHS Directive          | Pro-active compliance (Product out of EU RoHS legal scope)<br><a href="#">EU RoHS Declaration</a>                           |
| Mercury free               | Yes   |
| RoHS exemption information | <a href="#">Yes</a>   |
| China RoHS Regulation      | <a href="#">China RoHS declaration</a>  |
| Environmental Disclosure   | <a href="#">Product Environmental Profile</a>   |
| Circularity Profile        | <a href="#">End of Life Information</a>   |
| WEEE                       | The product must be disposed on European Union markets following specific waste collection and never end up in rubbish bins |

Contractual warranty

|          |           |
|----------|-----------|
| Warranty | 18 months |
|----------|-----------|

Dimensions



Panel Cut-out for Pushbuttons, Switches and Pilot Lights (Finished Holes, Ready for Installation)

| Connection by Screw Clamp Terminals or Plug-in Connectors or on Printed Circuit Board   | Connection by Faston Connectors  |
|---|--|
|    |  |
| <div>(1) Diameter on finished panel or support</div> <div>(2) 40 mm min. / 1.57 in. min.</div> <div>(3) 30 mm min. / 1.18 in. min.</div> <div>(4) Ø 22.5 mm / 0.89 in. recommended (Ø 22.3 mm <sup>+0.4</sup><sub>0</sub> / 0.88 in. <sup>+0.016</sup><sub>0</sub>)</div> <div>(5) 45 mm min. / 1.78 in. min.</div> <div>(6) 32 mm min. / 1.26 in. min.</div> |  |