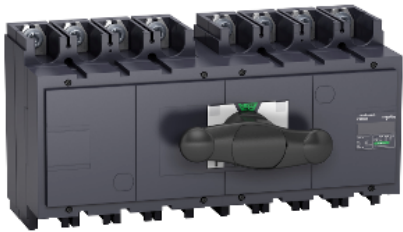


# Product datasheet

Specifications



complete manual source  
changeover assembly, FXM630,  
Compact INS630 switch  
disconnectors, 630 A, 4 poles

Local distributor code: 382088148 31155

## Main

Range of product	INS320...630
Range	ComPact
Device short name	INS630
Product or component type	Changeover switch
Device application	Change source of supply
Range compatibility	Compact INS INS630 switch disconnectors
Poles description	4P
Network type	DC AC
Network frequency	50/60 Hz
Mounting mode	Fixed
Upside connection	Front
Downside connection	Front
Suitability for isolation	Yes
Contact position indicator	Yes
[Icm] rated short-circuit making capacity	330 kA with upstream protection circuit breaker 690 V AC at 50/60 Hz 50 kA switch-disconnector alone 690 V AC at 50/60 Hz

## Complementary

Transfer switch class	PC
Number of contact position	3
Control type	Direct front rotary handle
Mounting support	Rail Plate
Locking options description	Padlocking in OFF position
[Ie] rated operational current	AC-22A: 630 A AC 50/60 Hz 220/240 V AC-22A: 630 A AC 50/60 Hz 480 V NEMA AC-23A: 630 A AC 50/60 Hz 220/240 V AC-23A: 630 A AC 50/60 Hz 480 V NEMA DC-22A: 550 A DC 125 V 2 poles in series DC-23A: 550 A DC 125 V 2 poles in series DC-23B: 630 A DC 125 V 2 poles in series DC-22A: 550 A DC 250 V 4 poles in series DC-23A: 550 A DC 250 V 4 poles in series DC-23B: 630 A DC 250 V 4 poles in series

[Ith] conventional free air thermal current	630 A at 60 °C
Rated duty	Uninterrupted
Intermittent duty class	Class 120 - 60 %
[Ui] rated insulation voltage	750 V AC 50/60 Hz
[Uimp] rated impulse withstand voltage	8 kV
[Ue] rated operational voltage	690 V AC 50/60 Hz conforming to IEC 60947-3 750 V AC 50/60 Hz conforming to IEC 60947-3 750 V DC conforming to IEC 60947-3 250 V DC conforming to IEC 60947-3
Mechanical interlocking	With mechanical interlocking
Mechanical durability	10000 cycles
Electrical durability	AC-22A: 1500 cycles 440 V AC 50/60 Hz AC-22A: 1500 cycles 500 V AC 50/60 Hz AC-22A: 1500 cycles 690 V AC 50/60 Hz AC-23A: 1500 cycles 440 V AC 50/60 Hz AC-23A: 1500 cycles 500 V AC 50/60 Hz AC-23A: 1500 cycles 690 V AC 50/60 Hz DC-23A: 1000 cycles 250 V DC 4 poles in series DC-23B: 200 cycles 250 V DC 4 poles in series
Connection pitch	45 mm
[Icw] rated short-time withstand current	11.5 kA during 3 s conforming to IEC 60947-3 20 kA during 1 s conforming to IEC 60947-3 4 kA during 30 s conforming to IEC 60947-3 4.9 kA during 20 s conforming to IEC 60947-3
Height	205 mm
Width	395 mm
Depth	155 mm
Net weight	13.5 kg

## Environment

Standards	IEC 60947-3 IEC 60947-1
Product certifications	KEMA-KEUR CCC
Electrical shock protection class	Class II
IP degree of protection	IP40 conforming to IEC 60947-3
Pollution degree	3
Ambient air temperature for operation	-25...70 °C
Ambient air temperature for storage	-50...85 °C

## Packing Units

Unit Type of Package 1	PCE
Number of Units in Package 1	1
Package 1 Weight	14.596 kg
Package 1 Height	21.2 cm
Package 1 width	22 cm
Package 1 Length	49.4 cm
Unit Type of Package 2	S04
Number of Units in Package 2	1

Package 2 Weight	15.71 kg
Package 2 Height	30 cm
Package 2 width	40 cm
Package 2 Length	60 cm

Offer Sustainability

Sustainable offer status	Green Premium product
REACH Regulation	<a href="#">REACH Declaration</a>
EU RoHS Directive	Compliant <a href="#">EU RoHS Declaration</a>
Mercury free	Yes
RoHS exemption information	<a href="#">Yes</a>
China RoHS Regulation	<a href="#">China RoHS declaration</a> Product out of China RoHS scope. Substance declaration for your information
Environmental Disclosure	<a href="#">Product Environmental Profile</a>
Circularity Profile	<a href="#">End of Life Information</a>
WEEE	The product must be disposed on European Union markets following specific waste collection and never end up in rubbish bins

Contractual warranty

Warranty	18 months
----------	-----------