

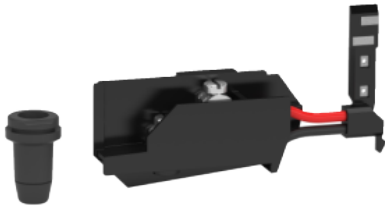
# Product datasheet

Specifications



## CONTACT BLOCK

Local distributor code: 385905626    KBC16ZT1



### Main

Range	Canalis
Product or component type	Connection support
Product compatibility	KBB KBA
Range compatibility	KBA tap-off unit KBB tap-off unit

### Complementary

Accessory / separate part category	Tap-off unit accessory
Device application	To connect remote control circuit
Standards	IEC 61439-6 IEC 60439-2
Net weight	10 g
Quantity per set	Set of 10

### Packing Units

Unit Type of Package 1	PCE
Number of Units in Package 1	1
Package 1 Weight	9.0 g
Package 1 Height	3 cm
Package 1 width	12 cm
Package 1 Length	12 cm
Unit Type of Package 2	BAG
Number of Units in Package 2	10
Package 2 Weight	115.0 g
Package 2 Height	6.5 cm
Package 2 width	12 cm
Package 2 Length	12 cm
Unit Type of Package 3	P06
Number of Units in Package 3	960

Package 3 Weight	19.0 kg
Package 3 Height	63 cm
Package 3 width	80 cm
Package 3 Length	60 cm

Offer Sustainability

Sustainable offer status	Green Premium product
REACH Regulation	<a href="#">REACH Declaration</a>
EU RoHS Directive	Compliant <a href="#">EU RoHS Declaration</a>
Mercury free	Yes
RoHS exemption information	<a href="#">Yes</a>
China RoHS Regulation	<a href="#">China RoHS declaration</a> Product out of China RoHS scope. Substance declaration for your information
Environmental Disclosure	<a href="#">Product Environmental Profile</a>
WEEE	The product must be disposed on European Union markets following specific waste collection and never end up in rubbish bins
PVC free	Yes
Halogen content performance	Halogen free plastic parts product

Contractual warranty

Warranty	18 months
----------	-----------