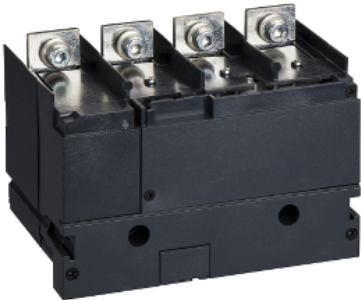


# Product datasheet

Specifications



current transformer module with voltage output, ComPact NSX250, 250 A rating, 4 poles

Local distributor code: 391355697    LV431570

## Main

Device short name	CT module and voltage output
Product or component type	Current transformer
Device application	Control
Range compatibility	ComPact NSX250 INS250 Compact INV100...250
Poles description	4P
[In] rated current	250 A
Current transformer ratio	250/5 A
Power consumption in VA	1.1 VA
Accuracy class	Class 1

## Complementary

[Ue] rated operational voltage	530 V
Network type	AC
Network frequency	50/60 Hz
Auxiliary connection terminal	Cable connector 2.5 mm²

## Environment

Electrical shock protection class	Class II
IP degree of protection	IP40 conforming to IEC 60529
IK degree of protection	IK04 conforming to IEC 62262

## Packing Units

Unit Type of Package 1	PCE
Number of Units in Package 1	1
Package 1 Weight	1.115 kg
Package 1 Height	13.5 cm
Package 1 width	14.5 cm
Package 1 Length	17.5 cm

Unit Type of Package 2	S03
Number of Units in Package 2	4
Package 2 Weight	4.947 kg
Package 2 Height	30 cm
Package 2 width	30 cm
Package 2 Length	40 cm

### Offer Sustainability

Sustainable offer status	Green Premium product
REACH Regulation	<a href="#">REACH Declaration</a>
EU RoHS Directive	Compliant <a href="#">EU RoHS Declaration</a>
Mercury free	Yes
RoHS exemption information	<a href="#">Yes</a>
China RoHS Regulation	<a href="#">China RoHS declaration</a> Product out of China RoHS scope. Substance declaration for your information
Environmental Disclosure	<a href="#">Product Environmental Profile</a>
Circularity Profile	<a href="#">End of Life Information</a>
WEEE	The product must be disposed on European Union markets following specific waste collection and never end up in rubbish bins

### Contractual warranty

Warranty	18 months
----------	-----------