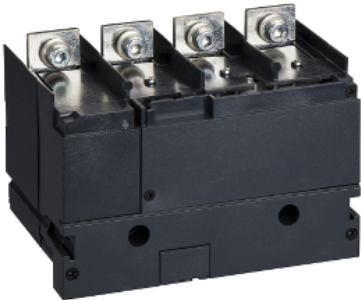


Product datasheet

Specifications



current transformer module
with voltage output, ComPact
NSX100/160/250, 125 A rating, 4
poles

Local distributor code: 391353068 LV429462

Main

Device short name	CT module and voltage output
Product or component type	Current transformer
Device application	Control
Range compatibility	ComPact NSX100 ComPact NSX160 ComPact NSX250 INS250 Compact INV100...250
Poles description	4P
[In] rated current	125 A
Current transformer ratio	125/5 A
Power consumption in VA	1.1 VA
Accuracy class	Class 1

Complementary

[Ue] rated operational voltage	530 V
Network type	AC
Network frequency	50...60 Hz
Auxiliary connection terminal	Cable connector 2.5 mm²

Environment

Electrical shock protection class	Class II
IP degree of protection	IP40 conforming to IEC 60529
IK degree of protection	IK04 conforming to IEC 62262

Packing Units

Unit Type of Package 1	PCE
Number of Units in Package 1	1
Package 1 Weight	1.108 kg
Package 1 Height	13.5 cm
Package 1 width	14.5 cm

Package 1 Length	17.5 cm
Unit Type of Package 2	S03
Number of Units in Package 2	4
Package 2 Weight	4.919 kg
Package 2 Height	30 cm
Package 2 width	30 cm
Package 2 Length	40 cm

Offer Sustainability

Sustainable offer status	Green Premium product
REACH Regulation	REACH Declaration
EU RoHS Directive	Compliant EU RoHS Declaration
Mercury free	Yes
RoHS exemption information	Yes
China RoHS Regulation	China RoHS declaration Product out of China RoHS scope. Substance declaration for your information
Environmental Disclosure	Product Environmental Profile
Circularity Profile	End of Life Information

Contractual warranty

Warranty	18 months
----------	-----------