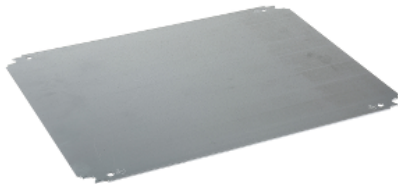


Product datasheet

Specifications



Plain mounting plate H500xW500mm made of galvanised sheet steel

Local distributor code: 392865212 NSYMM55

Main

Range	Spacial
Accessory / separate part category	Mounting accessory
Product or component type	Mounting plate
Device application	Multi-purpose
Enclosure nominal dimensions	500 mmW: 500 mm
Mounting location	Direct fixing on backstuds Step slide
Mounting plate description	Plain
Range compatibility	Spacial S3D Spacial CRN Spacial S3X Thalassa PLM
Quantity per set	Set of 1
Material	Galvanised steel

Complementary

Fixing mode	Screwed on backstuds - screw type M8 By fixing element
Permanent permissible load	90 kg
Height	450 mm
Width	450 mm
Depth	125 mm
Thickness	1.8 mm
Net weight	2.944 kg
Variant particularity	Installation in enclosures with inverted dimensions

Packing Units

Unit Type of Package 1	PCE
Number of Units in Package 1	1
Package 1 Weight	2.939 kg
Package 1 Height	1 cm
Package 1 width	45.5 cm

Package 1 Length	45.5 cm
------------------	---------

Offer Sustainability

Sustainable offer status	Green Premium product
REACH Regulation	REACH Declaration
REACH free of SVHC	Yes
EU RoHS Directive	Pro-active compliance (Product out of EU RoHS legal scope) EU RoHS Declaration
Toxic heavy metal free	Yes
Mercury free	Yes
RoHS exemption information	Yes
China RoHS Regulation	China RoHS declaration Pro-active China RoHS declaration (out of China RoHS legal scope)
Environmental Disclosure	Product Environmental Profile

Contractual warranty

Warranty	18 months
----------	-----------