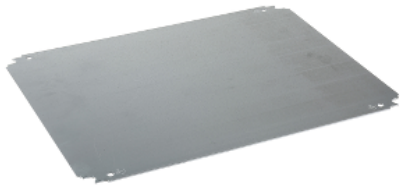


# Product datasheet

Specifications



## Plain mounting plate H500xW600mm made of galvanised sheet steel

Local distributor code: 392865238    NSYMM65

### Main

Range	Spacial
Accessory / separate part category	Mounting accessory
Product or component type	Mounting plate
Device application	Multi-purpose
Enclosure nominal dimensions	600 mmW: 500 mm
Mounting location	Direct fixing on backstuds Step slide
Mounting plate description	Plain
Range compatibility	Spacial S3D Spacial CRN Spacial S3X Thalassa PLM
Quantity per set	Set of 1
Material	Galvanised steel

### Complementary

Fixing mode	Screwed on backstuds - screw type M8 By fixing element
Permanent permissible load	90 kg
Height	550 mm
Width	450 mm
Depth	125 mm
Thickness	1.8 mm
Net weight	3.6 kg

### Packing Units

Unit Type of Package 1	PCE
Number of Units in Package 1	1
Package 1 Weight	3.664 kg
Package 1 Height	1 cm
Package 1 width	45 cm
Package 1 Length	55 cm

Offer Sustainability

Sustainable offer status	Green Premium product
REACH Regulation	<a href="#">REACH Declaration</a>
REACH free of SVHC	Yes
EU RoHS Directive	Pro-active compliance (Product out of EU RoHS legal scope) <a href="#">EU RoHS Declaration</a>
Toxic heavy metal free	Yes
Mercury free	Yes
RoHS exemption information	<a href="#">Yes</a>
China RoHS Regulation	<a href="#">China RoHS declaration</a> Pro-active China RoHS declaration (out of China RoHS legal scope)
Environmental Disclosure	<a href="#">Product Environmental Profile</a>

Contractual warranty

Warranty	18 months
----------	-----------