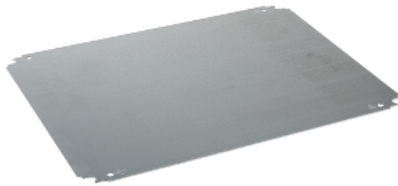


# Product datasheet

Specifications



## Plain mounting plate H1000xW1000mm made of galvanised sheet steel

Local distributor code: 392865335    NSYMM1010

### Main

Range	Spacial
Accessory / separate part category	Mounting accessory
Product or component type	Mounting plate
Device application	Multi-purpose
Enclosure nominal dimensions	1000 mmW: 1000 mm
Mounting location	Step slide Direct fixing on backstuds
Mounting plate description	Plain
Range compatibility	Spacial S3D Spacial CRN Spacial S3X Thalassa PLM
Quantity per set	Set of 1
Material	Galvanised steel

### Complementary

Fixing mode	Screwed on backstuds - screw type M8 By fixing element
Permanent permissible load	180 kg
Height	950 mm
Width	950 mm
Depth	125 mm
Thickness	2.5 mm
Net weight	18.1 kg

### Packing Units

Unit Type of Package 1	PCE
Number of Units in Package 1	1
Package 1 Weight	18.674 kg
Package 1 Height	1.2 cm
Package 1 width	95 cm
Package 1 Length	95 cm

Offer Sustainability

Sustainable offer status	Green Premium product
REACH Regulation	<a href="#">REACH Declaration</a>
REACH free of SVHC	Yes
EU RoHS Directive	Pro-active compliance (Product out of EU RoHS legal scope) <a href="#">EU RoHS Declaration</a>
Toxic heavy metal free	Yes
Mercury free	Yes
RoHS exemption information	<a href="#">Yes</a>
China RoHS Regulation	<a href="#">China RoHS declaration</a> Pro-active China RoHS declaration (out of China RoHS legal scope)
Environmental Disclosure	<a href="#">Product Environmental Profile</a>

Contractual warranty

Warranty	18 months
----------	-----------